


LOC I-OCZ 111.1	APP CRS 177°	Rwy Ldg 12901
		TDZE 1195
		Apt Elev 1219

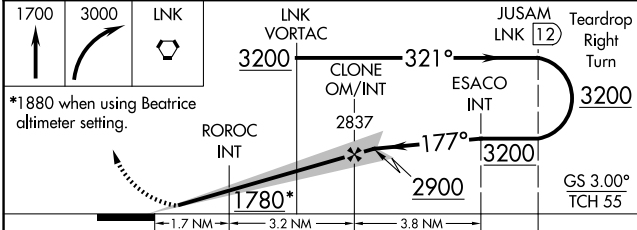
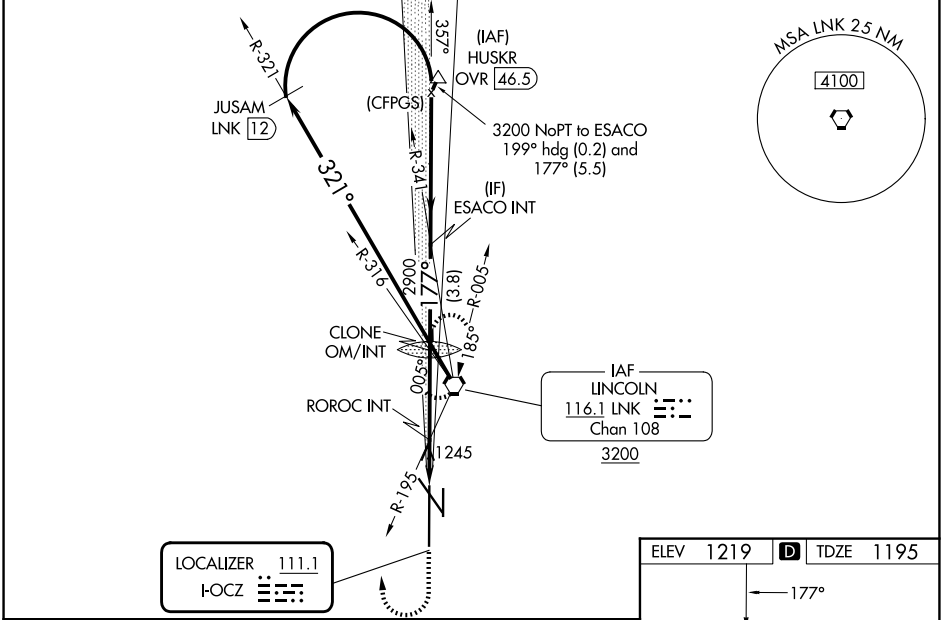
ILS Y or LOC Y RWY 18

LINCOLN (LNK)

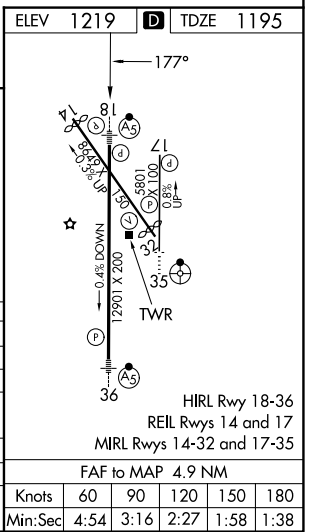
⚠ When local altimeter setting not received use Beatrice altimeter setting and increase DA to 1486; and all MDA 100 feet, increase visibility S-LOC 18 Cat C, D, E and Circling Cats C and D 1/4 SM; increase ROROC fix minimums S-LOC 18 Cat C/D/E visibility 3/8 SM and Circling Cats C and D 1/4 SM. For inop ALS, increase S-ILS 18 Cat E visibility to RVR 4000, S-LOC 18 Cat E visibility to 1 3/4 SM, and ROROC fix minimums S-LOC 18 Cat E visibility to 1 1/2 SM. For inop ALS when using Beatrice altimeter setting, increase S-ILS 18 all Cats visibility to RVR 4500, S-LOC 18 Cat E visibility to 2 SM, and ROROC fix minimums S-LOC 18 Cat C/D/E visibility to 1 3/4 SM.
#RVR 1800 authorized with use of FD or AP or HUD to DA.

MALS

MISSED APPROACH:
 Climb to 1700 then climbing right turn to 3000 direct LNK VORTAC and hold.

ATIS 118.05 290.9	OMAHA APP CON 124.0 270.3	LINCOLN TOWER* 118.5(CTAF) 253.5	GND CON 121.9 275.8	UNICOM 122.95
-----------------------------	-------------------------------------	--	-------------------------------	-------------------------



CATEGORY	A	B	C	D	E
S-ILS 18#	1395/24 200 (200-1/2)				
S-LOC 18	1780/24	585 (600-1/2)	1780-1 1/4	585 (600-1 1/4)	
CIRCLING	1780-1	561 (600-1)	1820-1 3/4	1960-2 1/2	2040-3
ROROC FIX MINIMUMS (DUAL VOR RECEIVERS REQUIRED)					
S-LOC 18	1720-24	525 (600-1/2)	1720/55	525 (600-1)	
CIRCLING	1720-1	501 (600-1)	1760-1	541 (600-1)	1820-1 3/4
			601 (700-1 3/4)	741 (800-2 1/2)	821 (900-3)



NC-2, 14 MAY 2026 to 11 JUN 2026

NC-2, 14 MAY 2026 to 11 JUN 2026