

WAAS CH 42930 W14A	APP CRS 142°	Rwy Ldg 8286 TDZE 1199 Apt Elev 1219
--	------------------------	---

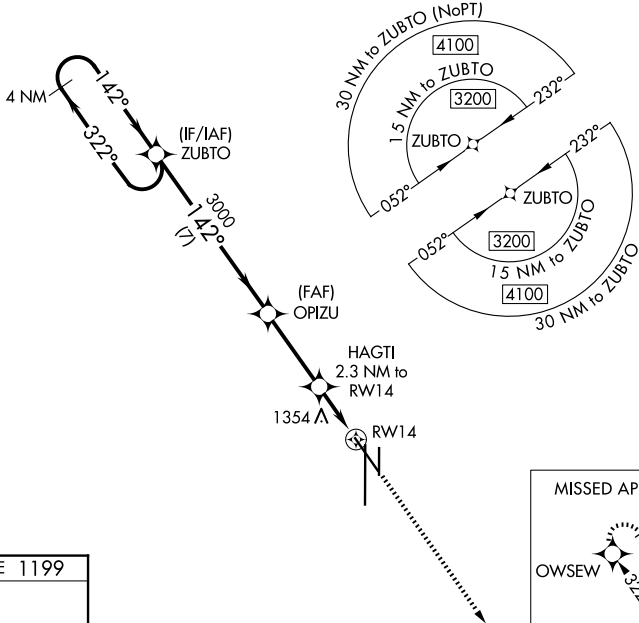
RNAV (GPS) RWY 14

LINCOLN (LNK)

▽ For uncompensated Baro-VNAV systems, LNAV/VNAV NA below -25°C (-13°F) or above 54°C (130°F). DME/DME RNP-0.3 NA. When local altimeter setting not received, use Beatrice altimeter setting and increase all DA 91 feet and all MDA 100 feet, increase LPV all Cats and LNAV/VNAV all Cats visibility 1/8 mile, increase LNAV Cats C/D and Circling Cats C/D visibility 1/4 mile. Helicopter visibility reduction below 3/4 SM NA. Baro-VNAV and VDP NA when using Beatrice altimeter setting.

MISSED APPROACH: Climb to 3100 direct OWSEW and hold.

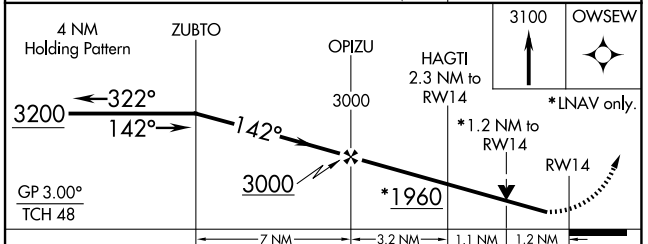
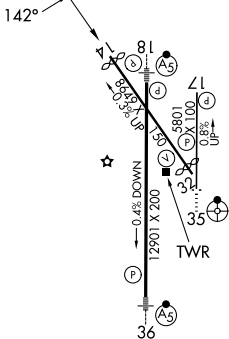
ATIS 118.05 290.9	OMAHA APP CON 124.0 270.3	LINCOLN TOWER* 118.5 (CTAF) 253.5	GND CON 121.9 275.8	UNICOM 122.95
-----------------------------	-------------------------------------	---	-------------------------------	-------------------------



NC-2, 14 MAY 2026 to 11 JUN 2026

NC-2, 14 MAY 2026 to 11 JUN 2026

ELEV 1219	D	TDZE 1199
-----------	----------	-----------



CATEGORY	A	B	C	D
LPV DA	1449-1 250 (300-1)			
LNAV/VNAV DA	1449-1 250 (300-1)			
LNAV MDA	1620-1	421 (500-1)	1620-1 1/4	421 (500-1 1/4)
CIRCLING	1720-1 501 (600-1)	1760-1 541 (600-1)	1820-1 3/4 601 (700-1 3/4)	1960-2 1/2 741 (800-2 1/2)

HIRL Rwy 18-36
REIL Rws 14 and 17
MIRL Rws 14-32 and 17-35