

WAAS CH 40137 W17A	APP CRS 177°	Rwy Ldg TDZE Apt Elev	5400 1219 1219
--	------------------------	-----------------------------	---

RNAV (GPS) RWY 17

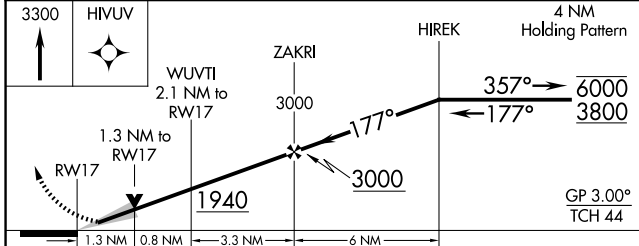
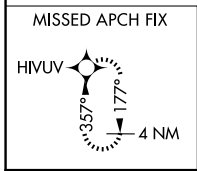
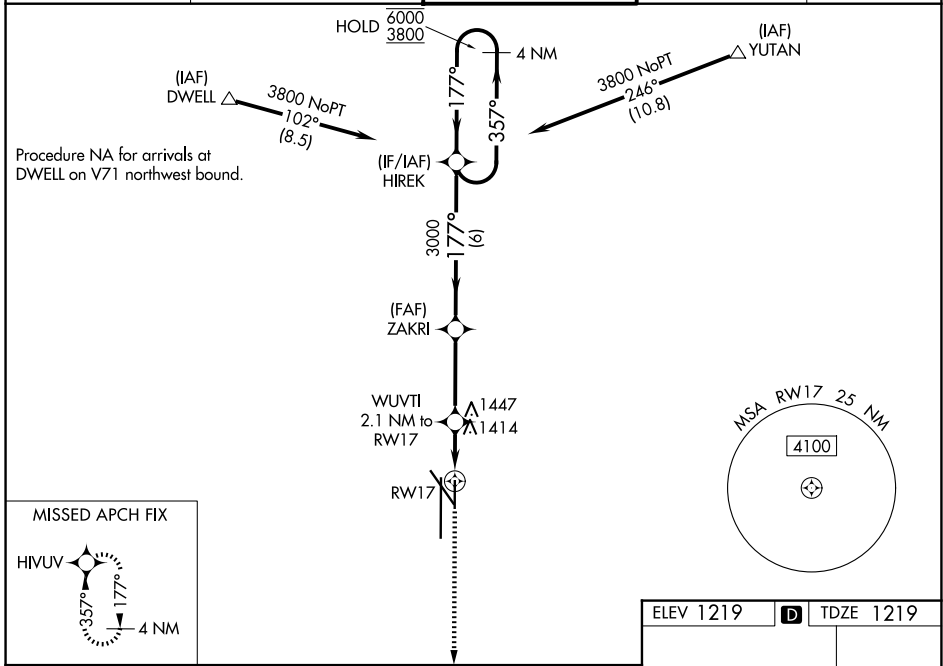
LINCOLN (LNK)

RNP APCH - GPS.

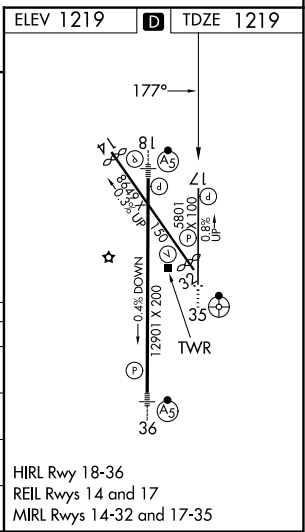
⚠ Baro-VNAV and VDP NA when using BIE altimeter setting. For uncompensated Baro-VNAV systems, LNAV/VNAV NA below -22°C or above 54°C. When local altimeter setting not received, use BIE altimeter setting and increase LPV DA to 1510 feet and all visibilities ½ SM; increase LNAV/VNAV DA to 1726 feet and all visibilities ¼ SM; increase all MDAs 100 feet and visibility Cats C and D ¼ SM.

MISSED APPROACH: Climb to 3300 direct HIVUV and hold.

ATIS 118.05 290.9	OMAHA APP CON 124.0 270.3	LINCOLN TOWER* 118.5 (CTAF) 253.5	GND CON 121.9 275.8	UNICOM 122.95
-----------------------------	-------------------------------------	---	-------------------------------	-------------------------



CATEGORY	A	B	C	D
LPV DA		1419-¾	200 (200-¾)	
LNAV/VNAV DA		1635-1⅛	416 (500-1⅛)	
LNAV MDA	1680-1	461 (500-1)	1680-1¾	461 (500-1¾)
CIRCLING	1680-1 461 (500-1)	1760-1 541 (600-1)	1820-1¾ 601 (700-1¾)	1960-2½ 741 (800-2½)



NC-2, 14 MAY 2026 to 11 JUN 2026

NC-2, 14 MAY 2026 to 11 JUN 2026