

WAAS CH 50114 W18A	APP CRS 177°	Rwy Ldg 12901 TDZE 1195 Apt Elev 1219
--	------------------------	--

RNAV (GPS) RWY 18

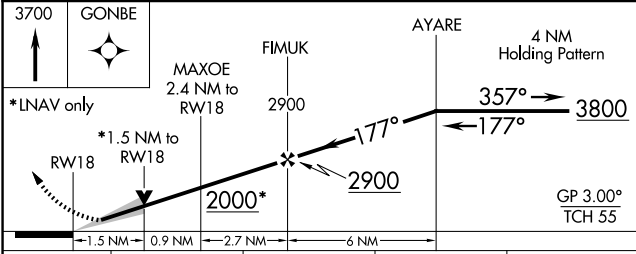
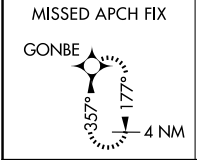
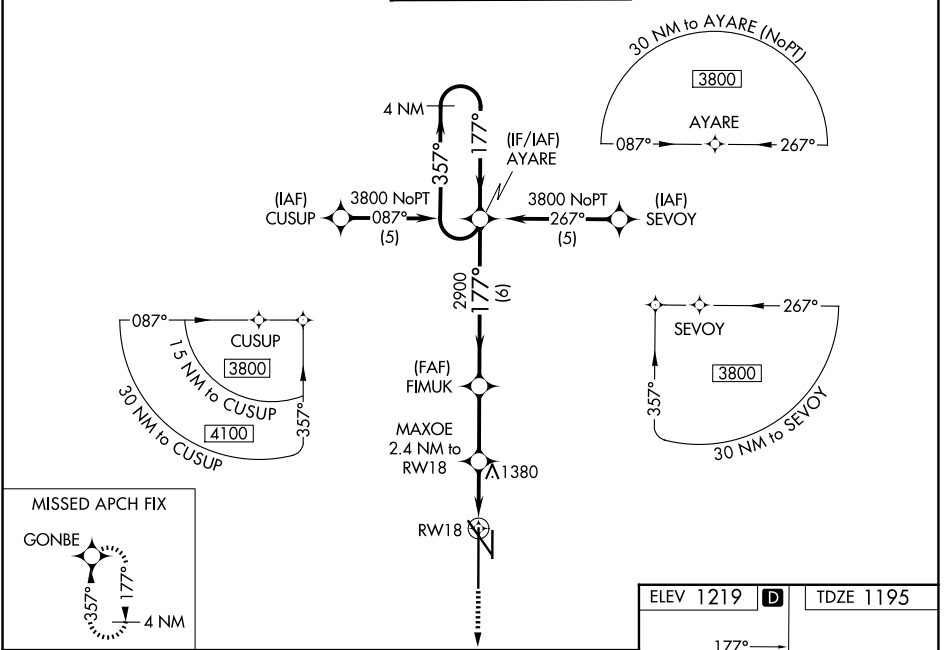
LINCOLN (LNK)

⚠ For uncompensated Baro-VNAV systems, LNAV/VNAV NA below -17°C (2°F) or above 54°C (130°F). DME/DME RNP-0.3 NA. When local altimeter setting not received, use Beatrice altimeter setting and increase all DA 91 feet, all MDA 100 feet, increase LPV all Cats, LNAV Cats C and D, and Circling Cats C and D visibilities ¼ mile, and increase LNAV/VNAV all Cats visibility ½ mile. For inop MALS, when using Beatrice altimeter setting increase LPV all Cats visibility to ½ mile. Baro-VNAV and VDP NA when using Beatrice altimeter setting.

MALS

MISSED APPROACH:
Climb to 3700 direct GONBE and hold.

ATIS 118.05 290.9	OMAHA APP CON 124.0 270.3	LINCOLN TOWER* 118.5(CTAF) 253.5	GND CON 121.9 275.8	UNICOM 122.95
-----------------------------	-------------------------------------	--	-------------------------------	-------------------------



ELEV 1219	D	TDZE 1195
-----------	----------	-----------

3700

3600

3500

3400

3300

3200

3100

3000

2900

2800

2700

2600

2500

2400

2300

2200

2100

2000

1900

1800

1700

1600

1500

1400

1300

1200

1100

1000

900

800

700

600

500

400

300

200

100

0

Distances: 1.5 NM, 0.9 NM, 2.7 NM, 6 NM, 0.48 DOWN, 0.20 X 200

Fixes: GONBE, FIMUK, MAXOE, AYARE, CUSUP, SEVOY, TWR

GP 3.00° TCH 55

CATEGORY	A	B	C	D
LPV DA		1445/24	250 (300-½)	
LNAV/VNAV DA		1720/60	525 (600-1¼)	
LNAV MDA	1720/24	525 (600-½)	1720/50 525 (600-1)	1720/60 525 (600-1¼)
CIRCLING	1720-1 501 (600-1)	1760-1 541 (600-1)	1820-1¾ 601 (700-1¾)	1960-2½ 741 (800-2½)

NC-2, 14 MAY 2026 to 11 JUN 2026

NC-2, 14 MAY 2026 to 11 JUN 2026