

WAAS CH 69328 W32A	APP CRS 322°	Rwy Ldg TDZE Apt Elev	7816 1192 1219
--	------------------------	-----------------------------	---

RNAV (GPS) RWY 32

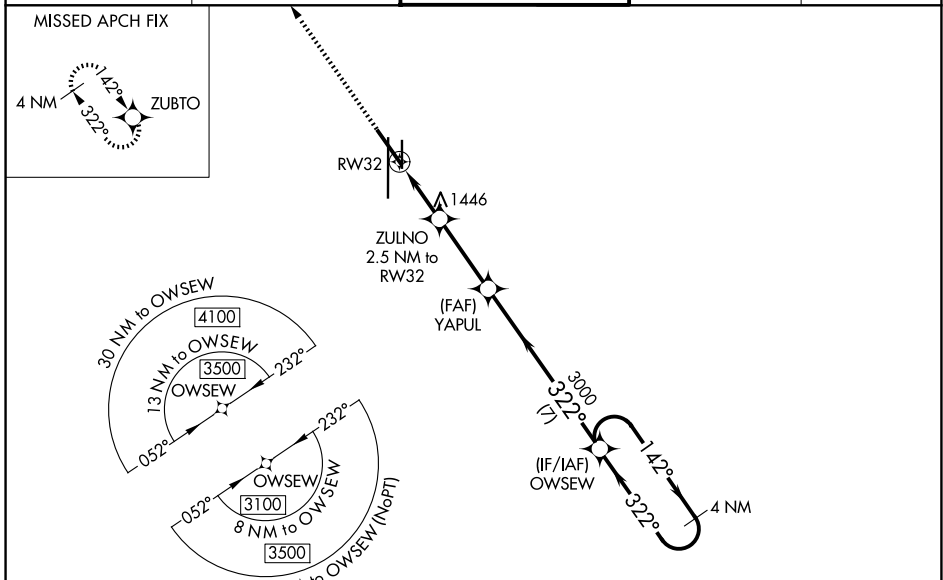
LINCOLN (LNK)

RNP APCH - GPS.

⚠ For uncompensated Baro-VNAV systems, LNAV/VNAV NA below -25°C (-13°F) or above 54°C (130°F). When local altimeter setting not received, use Beatrice altimeter setting and increase all DA 91 feet and all MDA 100 feet, increase LPV all Cats visibility 1/8 mile, increase LNAV/VNAV all Cats visibility 3/8 mile, increase LNAV Cats C/D and Circling Cats C/D visibility 1/4 mile. Helicopter visibility reduction below 3/4 SM NA. Baro-VNAV and VDP NA when using Beatrice altimeter setting.

MISSED APPROACH:
Climb to 3200 direct ZUBTO and hold.

ATIS 118.05 290.9	OMAHA APP CON 124.0 270.3	LINCOLN TOWER* 118.5(CTAF) 253.5	GND CON 121.9 275.8	UNICOM 122.95
-----------------------------	-------------------------------------	--	-------------------------------	-------------------------



ELEV 1219	TDZE 1192
3200 ZUBTO	VGSI and RNAV glidepath not coincident (VGSI Angle 3.00/TCH 54).
*LNAV only	OWSEW 4 NM Holding Pattern
ZULNO 2.5 NM to RW32	YAPUL 3000
*1.7 NM to RW32	3100
RW32	322° ← 322° →
2020*	GP 3.00° TCH 50
1.7 NM 0.8 NM 3.1 NM 7 NM	
CATEGORY	A B C D
LPV DA	1442-1 250 (300-1)
LNAV/VNAV DA	1576-1 1/4 384 (400-1 1/4)
LNAV MDA	1760-1 568 (600-1) 1760-1 3/4 568 (600-1 3/4)
CIRCLING	1760-1 541 (600-1) 1820-1 3/4 601 (700-1 3/4) 1960-2 1/2 741 (800-2 1/2)

