

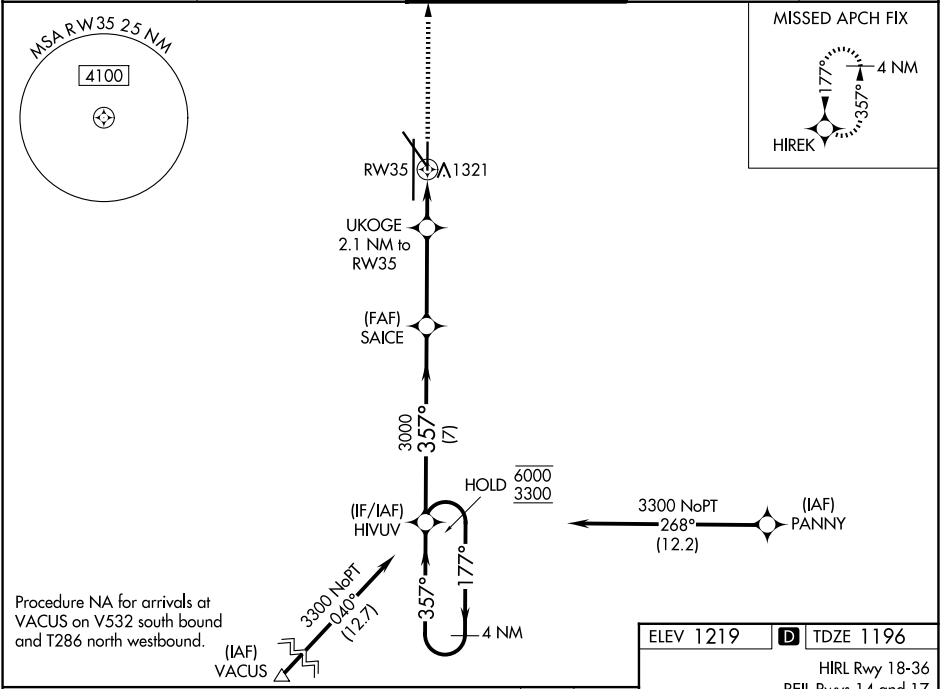
WAAS CH 45637 W35A	APP CRS 357°	Rwy Ldg TDZE 1196 Apt Elev 1219
--	------------------------	---

RNAV (GPS) RWY 35

LINCOLN (LNK)

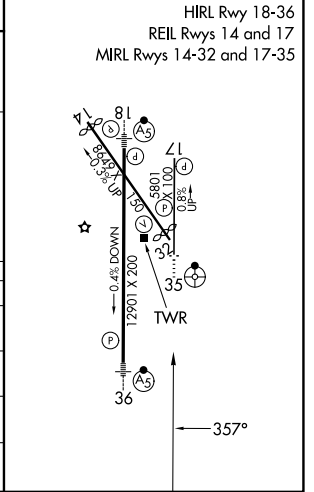
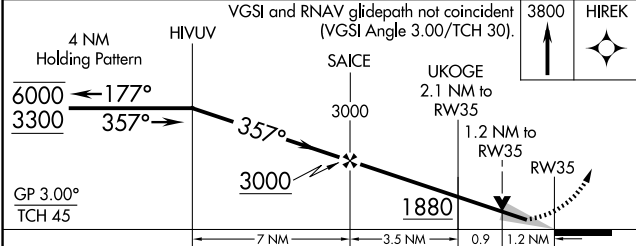
RNP APCH - GPS.		ODALS	MISSED APPROACH: Climb to 3800 direct HIREK and hold.	
For uncompensated Baro-VNAV systems, LNAV/VNAV NA below -25°C or above 54°C.				

ATIS 118.05 290.9	OMAHA APP CON 124.0 270.3	LINCOLN TOWER* 118.5 (CTAF) 253.5	GND CON 121.9 275.8	UNICOM 122.95
-----------------------------	-------------------------------------	---	-------------------------------	-------------------------



Procedure NA for arrivals at VACUS on V532 south bound and T286 north westbound.

ELEV 1219	D TDZE 1196
-----------	--------------------



CATEGORY	A	B	C	D
LPV DA	1446-3/4		250 (300-3/4)	
LNAV/VNAV DA	1534-1		338 (400-1)	
LNAV MDA	1580-3/4	384 (400-3/4)	1580-1	384 (400-1)
CIRCLING	1680-1 461 (500-1)	1760-1 541 (600-1)	1820-1 3/4 601 (700-1 3/4)	1960-2 1/2 741 (800-2 1/2)

NC-2, 14 MAY 2026 to 11 JUN 2026

NC-2, 14 MAY 2026 to 11 JUN 2026