

LOC/DME I-AAAY <b>110.3</b> Chan 40	APP CRS <b>227°</b>	Rwy Ldg <b>8273</b> TDZE <b>262</b> Apt Elev <b>266</b>
---	------------------------	---

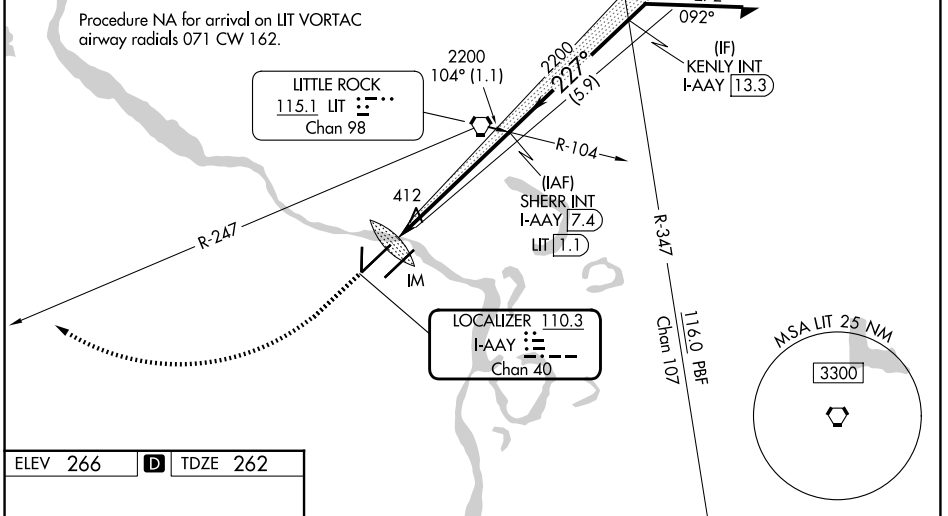
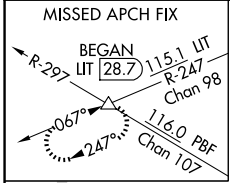
**ILS RWY 22R (CAT II & III)**  
BILL AND HILLARY CLINTON NTL/ADAMS FLD (LIT)

Simultaneous approach authorized.

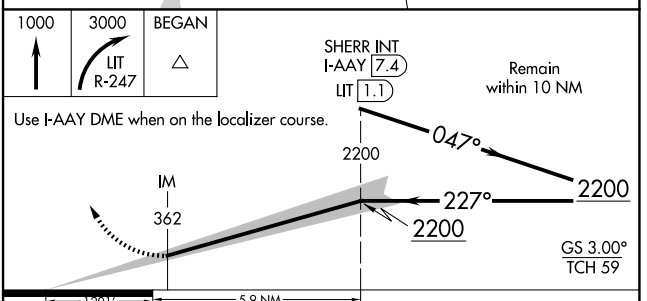
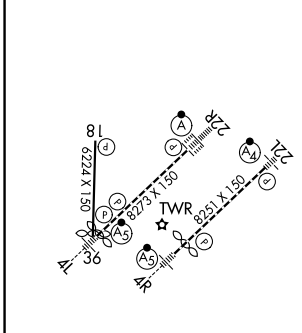
ALSF-2

MISSED APPROACH: Climb to 1000 then climbing right turn to 3000 on LIT VORTAC R-247 to BEGAN INT/LIT 28.7 DME and hold.

D-ATIS <b>125.65</b>	LITTLE ROCK APP CON <b>135.4 353.6</b>	ADAMS TOWER <b>118.7 257.8</b>	GND CON <b>121.9 339.8</b>
-------------------------	---	-----------------------------------	-------------------------------



ELEV 266	<b>D</b>	TDZE 262
----------	----------	----------



CATEGORY	A	B	C	D
S-ILS-22R	CAT II RA 106/12		100 DA 362	
S-ILS-22R	CAT III RVR 06			

**CATEGORY II & III ILS - SPECIAL AIRCREW & AIRCRAFT CERTIFICATION REQUIRED**

MIRL Rwy 18-36  
HIRL Rwy 4R-22L and 4L-22R  
TDZL/RCLS Rwy 22R

SC-1, 14 MAY 2026 to 11 JUN 2026

SC-1, 14 MAY 2026 to 11 JUN 2026