

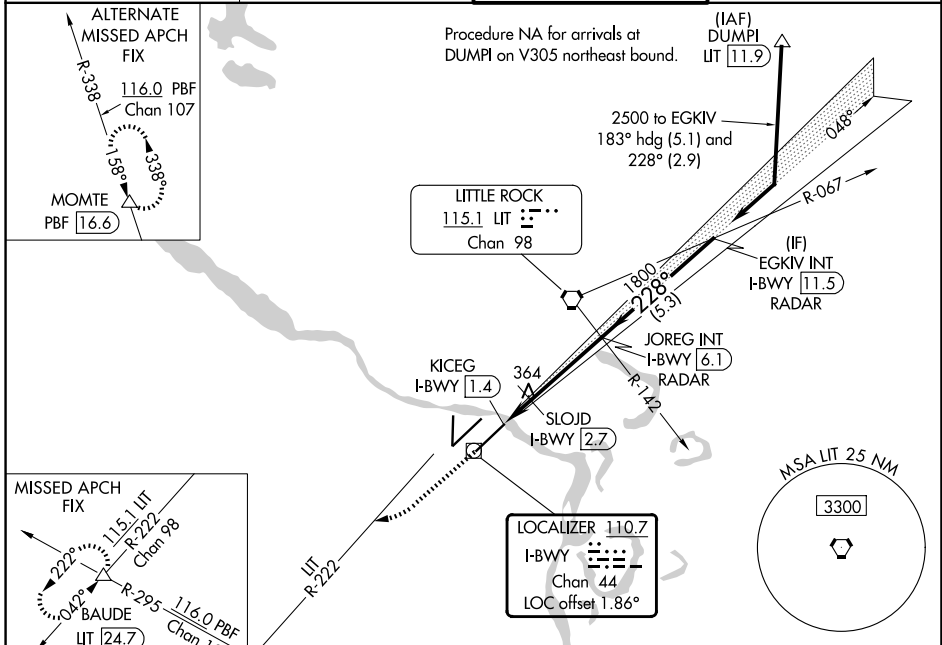
LOC/DME I-BWY 110.7 Chan 44	APP CRS 228°	Rwy Ldg TDZE 7200 260	Apt Elev 266
---	------------------------	---	------------------------

ILS or LOC RWY 22L

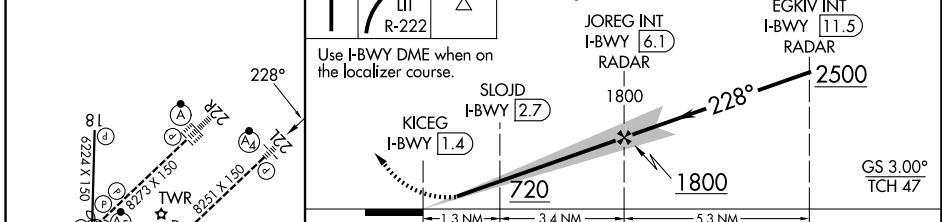
BILL AND HILLARY CLINTON NTL/ADAMS FLD (LIT)

DME or RADAR required.	MALSF	MISSED APPROACH: Climb to 800 then climbing right turn to 3000 on LIT VORTAC R-222 to BAUDE INT/LIT 24.7 DME and hold.
<p>Simultaneous approach authorized. Inop table does not apply to S-ILS 22 all Cats. For inop ALS, increase S-LOC 22L Cats C/D visibility to 1/2 SM.</p>		

D-ATIS 125.65	LITTLE ROCK APP CON 135.4 353.6	ADAMS TOWER 118.7 257.8	GND CON 121.9 339.8
-------------------------	---	-----------------------------------	-------------------------------



ELEV 266	D	TDZE 260	800	3000	BAUDE	VGSI and ILS glidepath not coincident (VGSI Angle 3.00/TCH 50).
----------	----------	----------	-----	------	-------	---



CATEGORY	A	B	C	D
S-ILS 22L	510/40		250 (300-3/4)	
S-LOC 22L	720/40	460 (500-3/4)	720/55	460 (500-1)
CIRCLING	820-1	1000-1	1180-2 3/4	1180-3
	554 (600-1)	734 (800-1)	914 (1000-2 3/4)	914 (1000-3)
SLOJD FIX MINIMUMS (DME REQUIRED)				
S-LOC 22L	620/40		360 (400-3/4)	
CIRCLING	820-1	1000-1	1180-2 3/4	1180-3
	554 (600-1)	734 (800-1)	914 (1000-2 3/4)	914 (1000-3)

MIRL Rwy 18-36					
HIRL Rwys 4R-22L and 4L-22R					
TDZL/RCLS Rwy 22R					
FAF to MAP 4.7 NM					
Knots	60	90	120	150	180
Min:Sec	4:42	3:08	2:21	1:53	1:34

SC-1, 14 MAY 2026 to 11 JUN 2026

SC-1, 14 MAY 2026 to 11 JUN 2026