

KAYOH EIGHT ARRIVAL

AL-236 (FAA)

LONG BEACH, CALIFORNIA

SW-3, 14 MAY 2026 to 11 JUN 2026

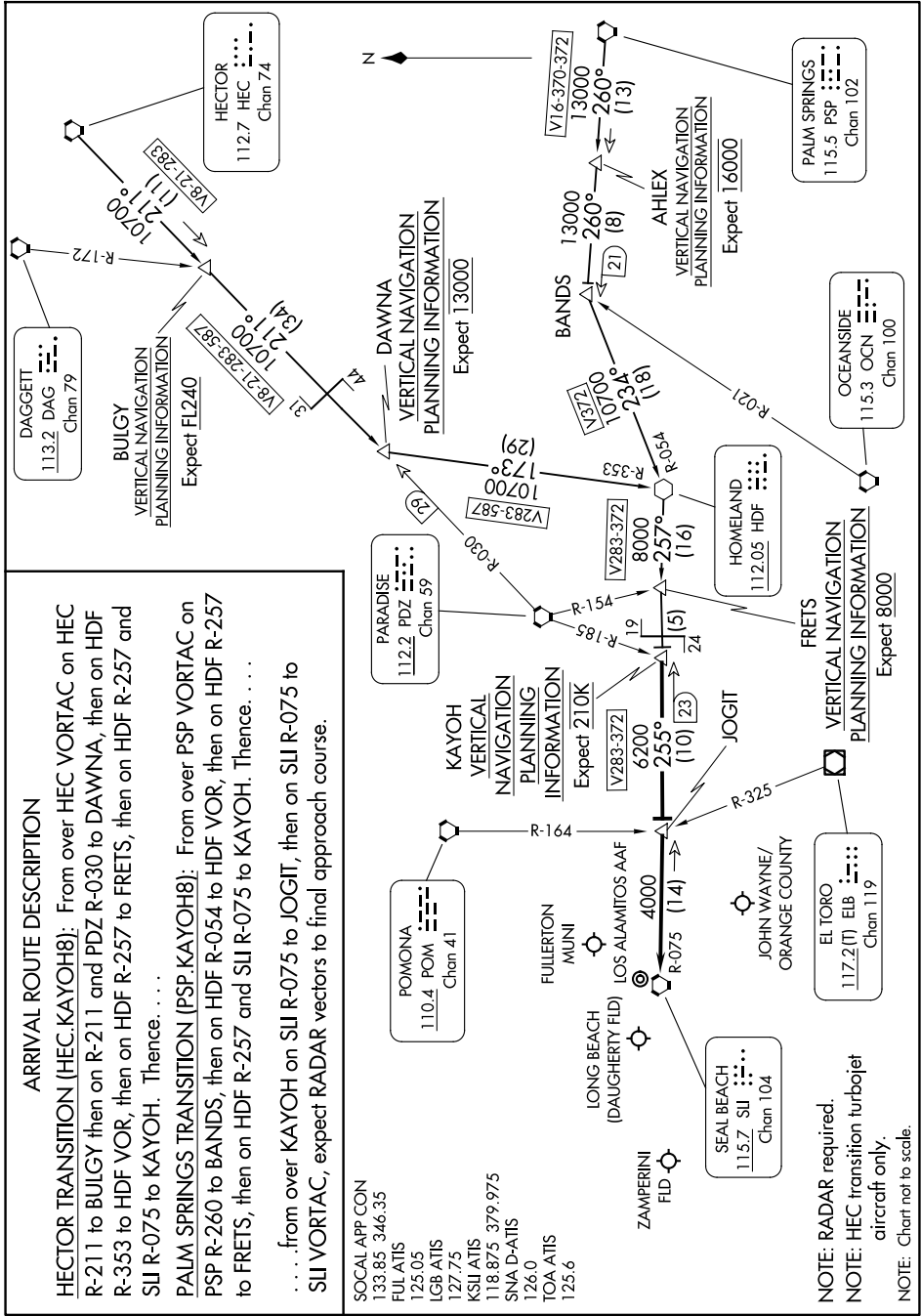
ARRIVAL ROUTE DESCRIPTION

HECTOR TRANSITION (HEC.KAYOH8): From over HEC VORTAC on HEC R-211 to BULGY then on R-211 and PDZ R-030 to DAWNA, then on HDF R-257 to BULGY, then on HDF R-257 to FRETTS, then on HDF R-257 and SUJ R-075 to KAYOH. Thence. . . .

PALM SPRINGS TRANSITION (PSP.KAYOH8): From over PSP VORTAC on PSP R-260 to BANDS, then on HDF R-054 to HDF VOR, then on HDF R-257 to FRETTS, then on HDF R-257 and SUJ R-075 to KAYOH. Thence. . . .

. . . . from over KAYOH on SUJ R-075 to JOGIT, then on SUJ R-075 to SUJ VORTAC, expect RADAR vectors to final approach course.

- SOCAL APP CON 133.85 346.35
- FUL ATIS 125.05
- LGB ATIS 127.75
- KSU ATIS 118.875 379.975
- SNA D-ATIS 126.0
- TOA ATIS 125.6



- NOTE: RADAR required.
- NOTE: HEC transition turbojet aircraft only.
- NOTE: Chart not to scale.

SW-3, 14 MAY 2026 to 11 JUN 2026

KAYOH EIGHT ARRIVAL

LONG BEACH, CALIFORNIA