

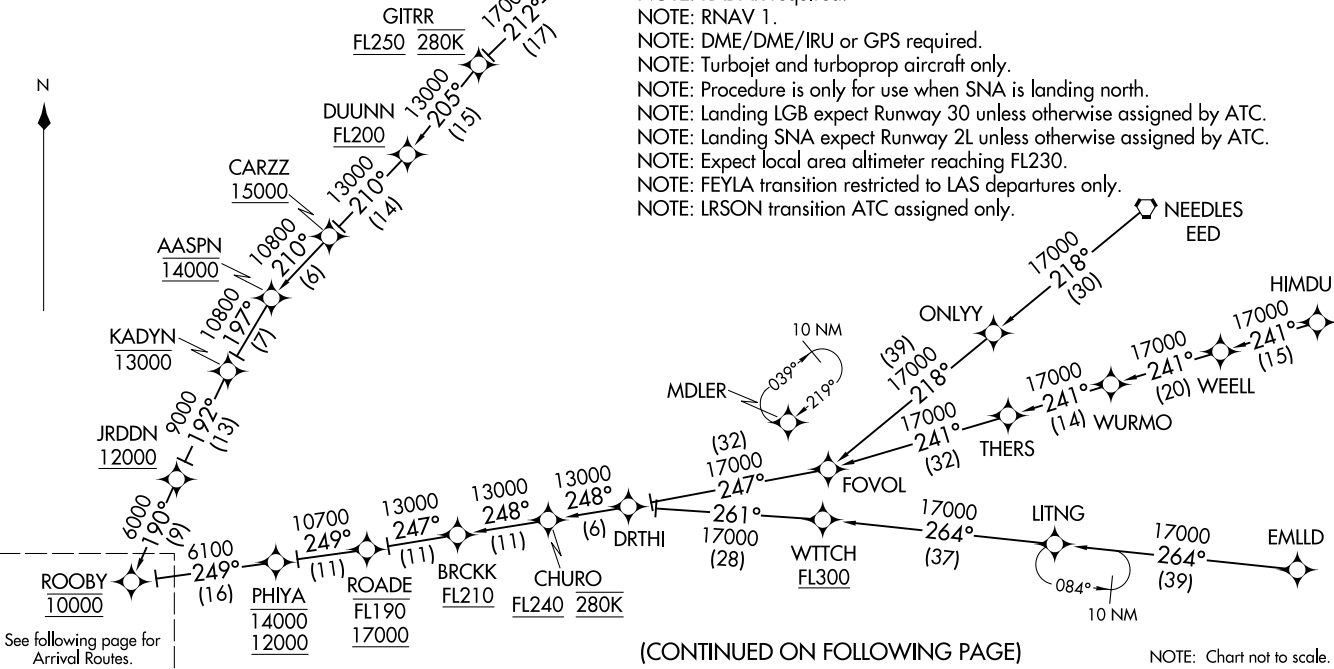
ROOBY THREE ARRIVAL (RNAV) (ROOBY.ROOBY3) 01FEB18

ROOBY THREE ARRIVAL (RNAV) Transition Routes

LONG BEACH, CALIFORNIA

- EMLLD TRANSITION (EMLLD.ROOBY3)
- FEYLA TRANSITION (FEYLA.ROOBY3)
- HIMDU TRANSITION (HIMDU.ROOBY3)
- LRSON TRANSITION (LRSON.ROOBY3)
- MARUE TRANSITION (MARUE.ROOBY3)
- NATEE TRANSITION (NATEE.ROOBY3)
- NEEDLES TRANSITION (EED.ROOBY3)

SOCAL APP CON  
134.0 278.3  
LGB ATIS  
127.75  
SNA D-ATIS  
126.0



NOTE: RADAR required.  
NOTE: RNAV 1.  
NOTE: DME/DME/IRU or GPS required.  
NOTE: Turbojet and turboprop aircraft only.  
NOTE: Procedure is only for use when SNA is landing north.  
NOTE: Landing LGB expect Runway 30 unless otherwise assigned by ATC.  
NOTE: Landing SNA expect Runway 2L unless otherwise assigned by ATC.  
NOTE: Expect local area altimeter reaching FL230.  
NOTE: FEYLA transition restricted to LAS departures only.  
NOTE: LRSON transition ATC assigned only.

(CONTINUED ON FOLLOWING PAGE)

NOTE: Chart not to scale.

ROOBY.ROOBY3) 21168

Transition Routes

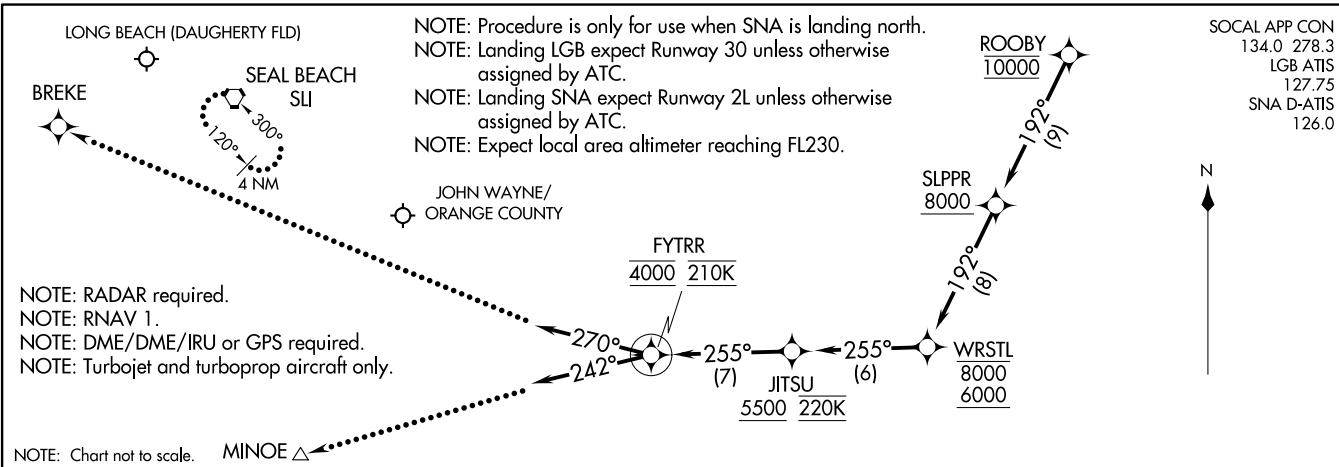
LONG BEACH, CALIFORNIA

AL-236 (FAA)

ROOBY THREE ARRIVAL (RNAV) (ROOBY, ROOBY3) 01 FEB 18

ROOBY THREE ARRIVAL (RNAV) Arrival Routes

LONG BEACH, CALIFORNIA



(ROOBY, ROOBY3) 21168

AL-236 (FAA) Arrival Routes

LONG BEACH, CALIFORNIA