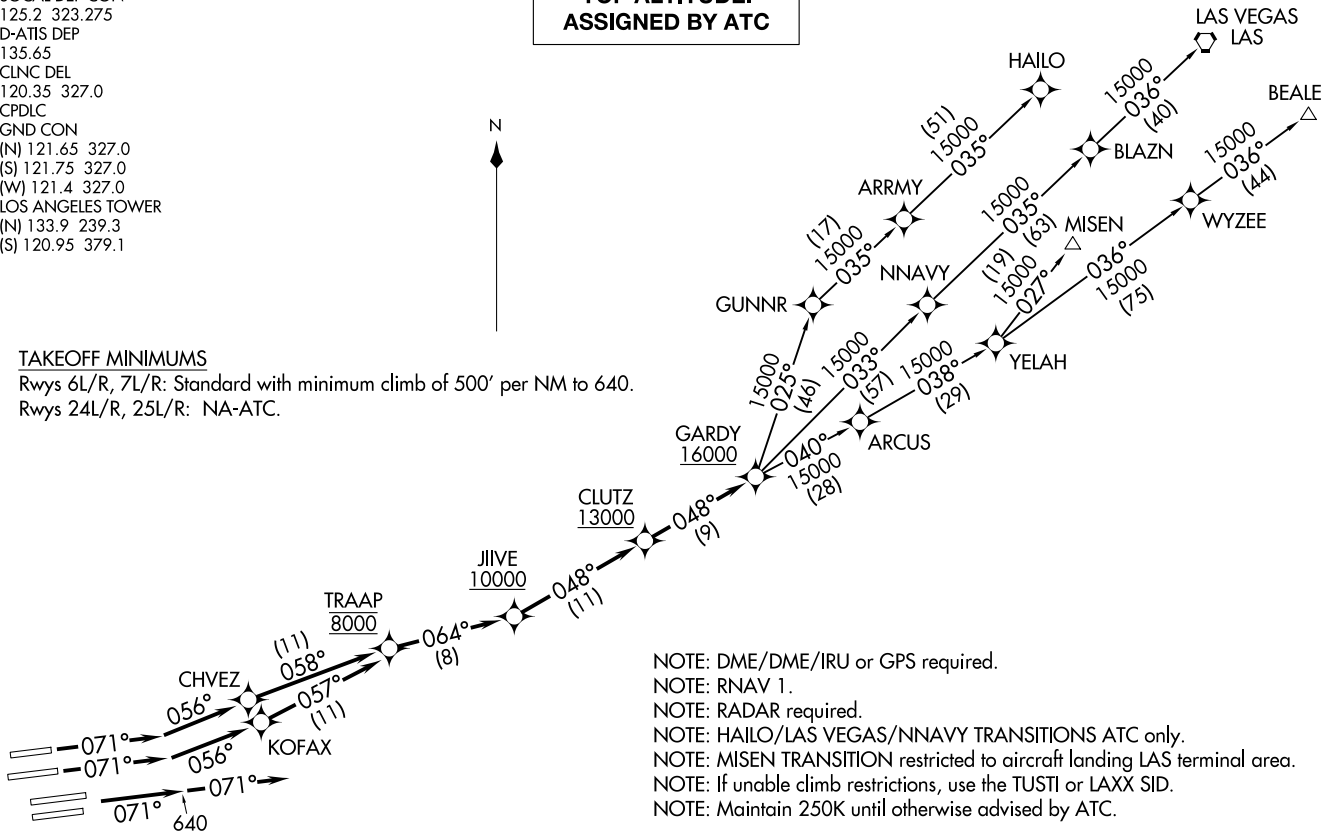


**TOP ALTITUDE:
ASSIGNED BY ATC**

SOCAL DEP CON
125.2 323.275
D-ATIS DEP
135.65
CLNC DEL
120.35 327.0
CPDLC
GND CON
(N) 121.65 327.0
(S) 121.75 327.0
(W) 121.4 327.0
LOS ANGELES TOWER
(N) 133.9 239.3
(S) 120.95 379.1

TAKEOFF MINIMUMS

Rwys 6L/R, 7L/R: Standard with minimum climb of 500' per NM to 640.
Rwys 24L/R, 25L/R: NA-ATC.



- NOTE: DME/DME/IRU or GPS required.
- NOTE: RNAV 1.
- NOTE: RADAR required.
- NOTE: HAILO/LAS VEGAS/NNAVY TRANSITIONS ATC only.
- NOTE: MISEN TRANSITION restricted to aircraft landing LAS terminal area.
- NOTE: If unable climb restrictions, use the TUSTI or LAXX SID.
- NOTE: Maintain 250K until otherwise advised by ATC.

(CONTINUED ON FOLLOWING PAGE)

NOTE: Chart not to scale.

GARDY FOUR DEPARTURE (RNAV)
 (GARDY4, GARDY) 10SEP20

LOS ANGELES, CALIFORNIA
 LOS ANGELES INTL (LAX)

GARDY FOUR DEPARTURE (RNAV)
 (GARDY4, GARDY) 25331

AL-237 (FAA)

LOS ANGELES INTL (LAX)
 LOS ANGELES, CALIFORNIA



DEPARTURE ROUTE DESCRIPTION

TAKEOFF RUNWAY 6L: Climb on heading 071° to intercept course 056° to CHVEZ, then on track 058° to cross TRAAP at 8000, then on track 064° to cross JIIVE at or above 10000, then on track 048° to cross CLUTZ at or above 13000, then on track 048° to cross GARDY at or above 16000, thence. . . .

TAKEOFF RUNWAY 6R: Climb on heading 071° to intercept course 056° to KOFAX, then on track 057° to cross TRAAP at 8000, then on track 064° to cross JIIVE at or above 10000, then on track 048° to cross CLUTZ at or above 13000, then on track 048° to cross GARDY at or above 16000, thence. . . .

TAKEOFF RUNWAYS 7L/R: Climb on heading 071° to 640, then on heading 071° or as assigned by ATC, expect vectors to cross TRAAP at 8000, then on track 064° to cross JIIVE at or above 10000, then on track 048° to cross CLUTZ at or above 13000, then on track 048° to cross GARDY at or above 16000, thence. . . .

. . . .on (transition). Maintain ATC assigned altitude. Expect filed altitude five minutes after departure.

BEALE TRANSITION (GARDY4.BEALE)

HAILO TRANSITION (GARDY4.HAILO)

LAS VEGAS TRANSITION (GARDY4.LAS)

MISEN TRANSITION (GARDY4.MISEN)

NNAVY TRANSITION (GARDY4.NNAVY)

SW-3, 14 MAY 2026 to 11 JUN 2026

SW-3, 14 MAY 2026 to 11 JUN 2026