

(GOATZ .GOATZ2) 25163

# GOATZ TWO ARRIVAL (RNAV)

AL-237 (FAA)

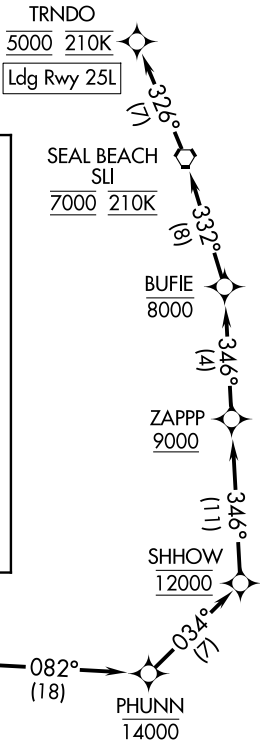
LOS ANGELES INTL (L.A.X)

LOS ANGELES, CALIFORNIA

SOCAL APP CON  
127.4 263.025  
LAX D-ATIS  
133.8  
LOS ANGELES TOWER  
133.9 239.3 (N)  
120.95 379.1 (S)

RNAV 1 - GPS.

RADAR required.



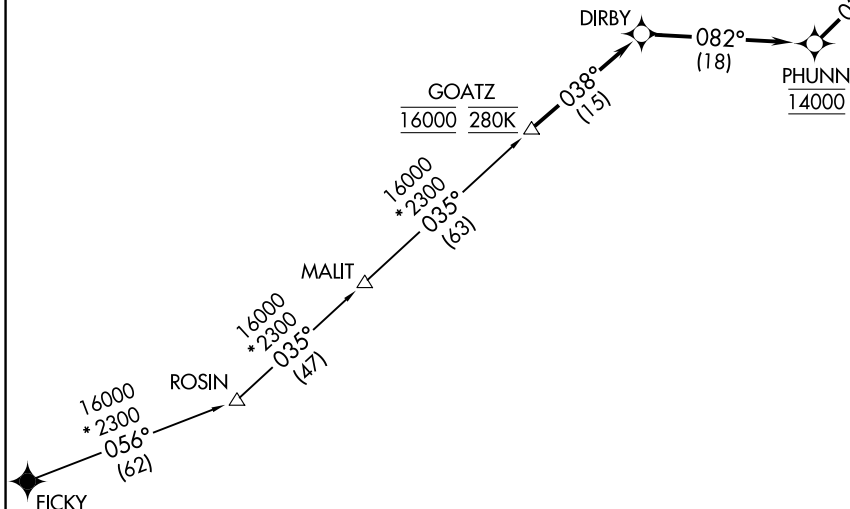
## ARRIVAL ROUTE DESCRIPTION

### FICKY TRANSITION (FICKY.GOATZ2)

From GOATZ on track 038° to DIRBY, then on track 082° to cross PHUNN at 14000, then on track 034° to cross SHHOW at 12000, then on track 346° to cross ZAPPP at or above 9000, then on track 346° to cross BUFIE at or below 8000, then on track 332° to cross SLI VORTAC at 7000 and at 210K, then on track 326° to cross TRNDO at 5000 and at 210K. Expect ILS or LOC RWY 25L or RNAV (RNP) Z RWY 25L.

### LOST COMMUNICATIONS

Proceed from TRNDO to Rwy 25L via RNAV (RNP) Z Rwy 25L, or ILS or LOC RWY 25L procedure.



NOTE: Jet aircraft only.  
NOTE: Expect Rwy 25L unless otherwise assigned by ATC.  
NOTE: GPS required.

NOTE: Chart not to scale.

SW-3, 14 MAY 2026 to 11 JUN 2026

SW-3, 14 MAY 2026 to 11 JUN 2026

# GOATZ TWO ARRIVAL (RNAV)

(GOATZ .GOATZ2) 26DEC24

LOS ANGELES, CALIFORNIA  
LOS ANGELES INTL (L.A.X)