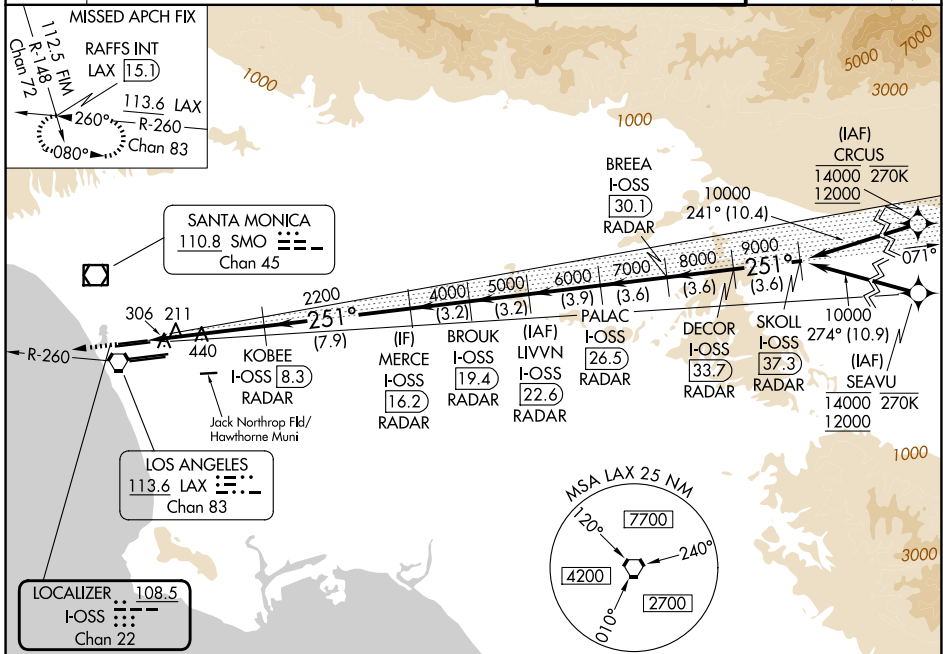


LOC/DME I-OSS 108.5 Chan 22	APP CRS 251°	Rwy Ldg 8926 TDZE 122 Apt Elev 128
---	------------------------	---

ILS RWY 24R (CAT II & III)

LOS ANGELES INTL (LAX)

From CRCUS, SEAVU: RNAV 1-GPS required. DME or RADAR required.		ALSF-2 	MISSED APPROACH: Climb to 2000 on heading 251° and LAX VORTAC R-260 to RAFFS INT/LAX 15.1 DME and hold.
Simultaneous approach authorized with HHR. Simultaneous approach authorized. RVR 1000 authorized with specific OPSPEC, MSPEC, or LOA approval and use of autoland or HUD to touchdown.			
D-ATIS 133.8	SOCAL APP CON 124.3 363.2 (APCH from W) 124.9 269.0 (090°-224°) 124.5 235.975 (225°-044°) 128.5 360.7 (045°-089°)	LOS ANGELES TOWER 133.9 239.3 (N) 120.95 379.1 (S)	GND CON 121.65 327.0 (N) 121.75 327.0 (S) 121.4 327.0 (W)



SW-3, 14 MAY 2026 to 11 JUN 2026

SW-3, 14 MAY 2026 to 11 JUN 2026

ELEV 128		TDZE 122	2000 ↑ hdg 251°	LAX R-260	RAFFS INT	VGSI and ILS glidepath not coincident (VGSI Angle 3.00/TCH 73).	DECOR I-OSS 33.7	SKOLL I-OSS 37.3
		10000 9000 8000 7000 6000 5000 4000 2200		BROOKLYN I-OSS 19.4 MERCER I-OSS 16.2 PALAC I-OSS 26.5 LIVVON I-OSS 22.6 BREA I-OSS 30.1 DECOR I-OSS 33.7 SKOLL I-OSS 37.3		251° 10000 9000 8000 7000 6000 5000 4000 2200		GS 3.00° TCH 55
6.4 NM 7.9 NM 3.2 NM 3.2 NM 3.9 NM 3.6 NM 3.6 NM 3.6 NM		A B C D		S-ILS 24R CAT II RA 118/10 100 DA 222		S-ILS 24R CAT III RVR 06		
<h2>CATEGORY II & III ILS - SPECIAL AIRCREW & AIRCRAFT CERTIFICATION REQUIRED</h2>								

TDZ/CL Rwy 6L, 7R, 24R, and 25L
HIRL all Rwys

LOS ANGELES, CALIFORNIA
Amdt 26C 14MAY26

33°57'N-118°24'W

LOS ANGELES INTL (LAX)
ILS RWY 24R (CAT II & III)