

LOC/DME I-LAX	APP CRS	Rwy Ldg	11095
109.9	251°	TDZE	104
Chan 36		Apt Elev	128

ILS RWY 25L (CAT II & III)

LOS ANGELES INTL (LAX)

RNP APCH - GPS. From CLIPUR or CRCUS or SEAVU or TRNDO.
 DME or RADAR required.
 Simultaneous approach authorized with HHR. Simultaneous approach authorized. RVR 1000 authorized with specific OPSPEC, MSPEC, or LOA approval and use of autoland or HUD to touchdown.

ALSF-2
 MISSED APPROACH: Climb to 2000 on heading 251° until crossing the SMO R-160 then left turn on heading 236° and on the SMO R-195 to CATLY INT/SMO 15.7 DME and hold.

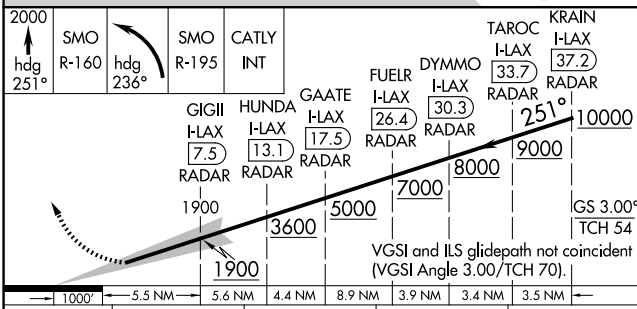
D-ATIS	SOCAL APP CON		
133.8	124.3 363.2 (APCH from W)	124.9 269.0 (090°-224°)	
	124.5 235.975 (225°-044°)	128.5 360.7 (045°-089°)	

LOS ANGELES TOWER	GND CON
133.9 239.3 (N)	121.65 327.0 (N)
120.95 379.1 (S)	121.75 327.0 (S)
	121.4 327.0 (W)

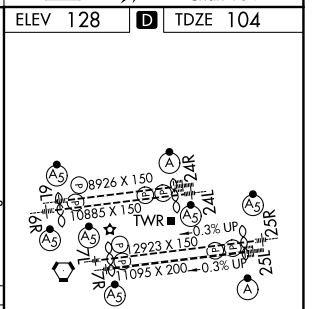


SW-3, 14 MAY 2026 to 11 JUN 2026

SW-3, 14 MAY 2026 to 11 JUN 2026



CATEGORY	A	B	C	D
S-ILS 25L	CAT II RA 107/10 100 DA 204			
S-ILS 25L	CAT III RVR 06			



ELEV 128 **D** TDZE 104

TAROC I-LAX 33.7 RADAR
 KRAIN I-LAX 37.2 RADAR
 DYMMO I-LAX 30.3 RADAR
 FUEL I-LAX 26.4 RADAR
 GAATE I-LAX 17.5 RADAR
 HUNDA I-LAX 13.1 RADAR
 GIGII I-LAX 7.5 RADAR

VGSI and ILS glidepath not coincident (VGSI Angle 3.00/TCH 70).

TDZ/CL Rwy's 6R, 7L, 24R, and 25L
 HIRL all Rwy's