

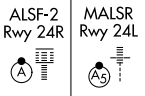
LOC/DME I-OSS 108.5 Chan 22	APP CRS 251°	Rwy Ldg 24R 8926 9483 TDZE 122 123 Apt Elev 128 128
---	------------------------	--

ILS or LOC RWY 24R

LOS ANGELES INTL (LAX)

From CRCUS, SEAVU: RNAV 1-GPS required. DME or RADAR required.

Simultaneous approach authorized with HHR. LOC procedure NA during simultaneous operations with HHR LOC RWY 25. Simultaneous approach authorized. For inop ALS, increase S-LOC 24R Cat C/D visibility to RVR 5500.

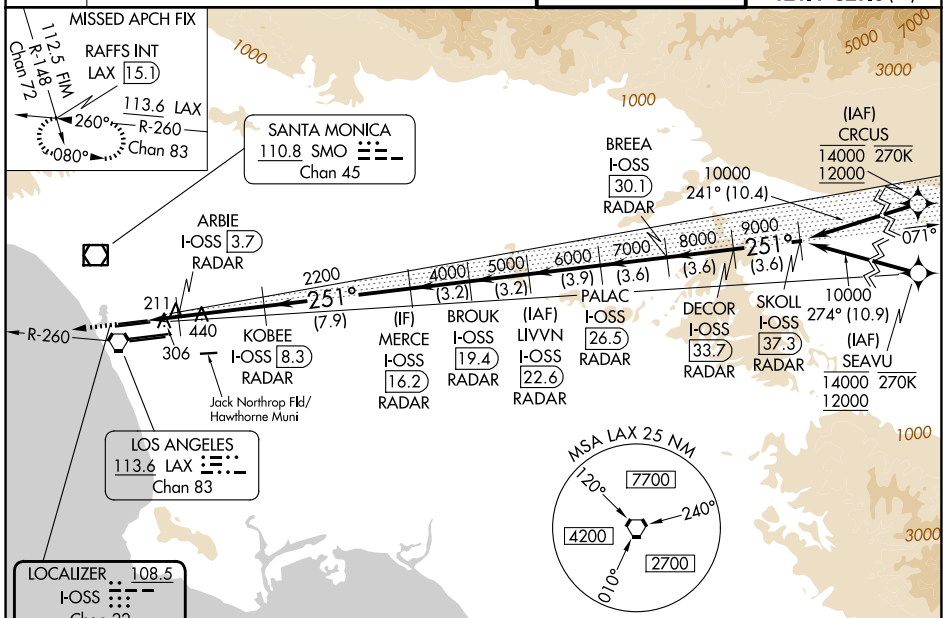


MISSED APPROACH: Climb to 2000 on heading 251° and LAX VORTAC R-260 to RAFFS INT/LAX 1.5.1 DME and hold.

D-ATIS 133.8	SOCAL APP CON			
	124.3 363.2 (APCh from W)	124.9 269.0 (090°-224°)	128.5 360.7 (045°-089°)	

LOS ANGELES TOWER	
133.9 239.3 (N)	120.95 379.1 (S)

GND CON	
121.65 327.0 (N)	121.75 327.0 (S)
121.4 327.0 (W)	



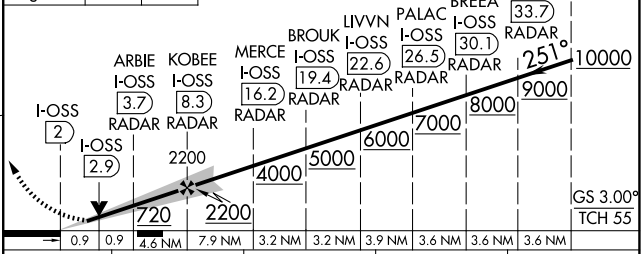
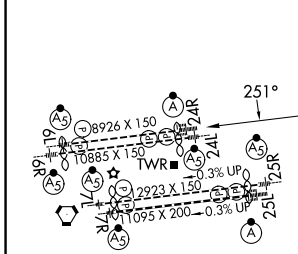
SW-3, 14 MAY 2026 to 11 JUN 2026

SW-3, 14 MAY 2026 to 11 JUN 2026

ELEV 128	TDZE 24R 122	TDZE 24L 123
----------	--------------	--------------

↑ 2000
hdg 251°

VGSI and ILS glidepath not coincident (VGSI Angle 3.00/TCH 73).



TDZ/CL Rwys 6R, 7L, 24R, and 25L HIRL all Rwys					
FAF to MAP 6.4 NM					
Knots	60	90	120	150	180
Min:Sec	6:24	4:16	3:12	2:34	2:08

CATEGORY	A		B		C		D	
S-ILS 24R	322/18				200 (200-½)			
S-LOC 24R	480/24		358 (400-½)		480/30		358 (400-¾)	
SIDESTEP 24L	500/55				377 (400-1)		500-1½ 377 (400-1½)	