

LOC/DME I-LAX	APP CRS	Rwy Ldg	25L	25R
109.9	251°		11095	11134
Chan 36		TDZE	104	104
		Apt Elev	128	128

ILS or LOC RWY 25L

LOS ANGELES INTL (LAX)

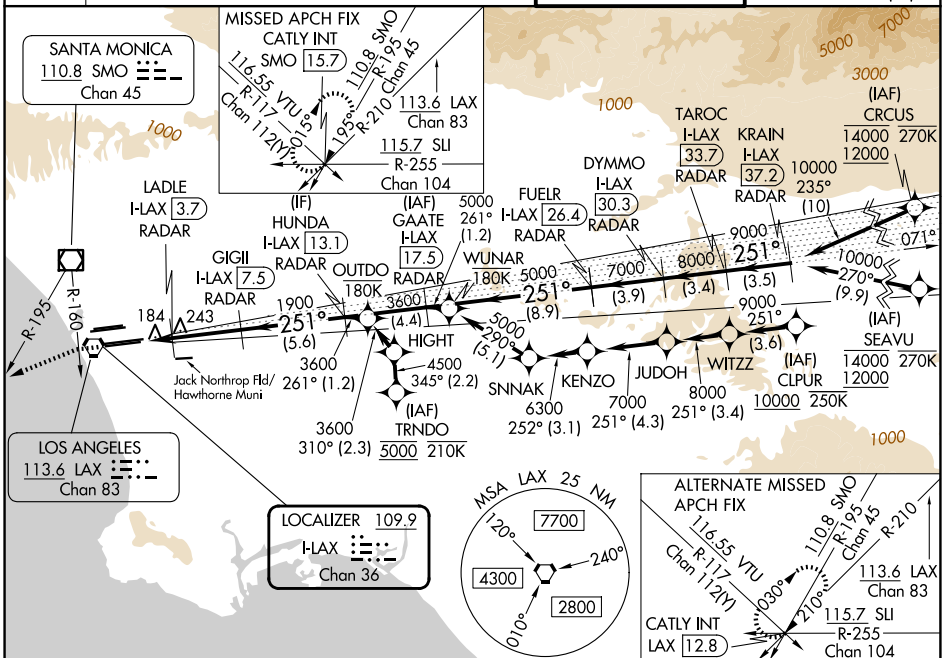
RNP APCH - GPS. From CLPUR or CRUCS or SEAVU or TRNDO. DME or RADAR required.

Simultaneous approach authorized. Simultaneous approach authorized with HHR.



MISSED APPROACH: Climb to 2000 on heading 251° until crossing the SMO R-160, then left turn on heading 236° and on the SMO R-195 to CATLY INT/SMO 15.7 DME and hold.

D-ATIS	SOCAL APP CON				LOS ANGELES TOWER		GND CON	
133.8	124.3 363.2 (APCH from W)	124.9 269.0 (090°-224°)			133.9 239.3 (N)	121.65 327.0 (N)		
	124.5 235.975 (225°-044°)	128.5 360.7 (045°-089°)			120.95 379.1 (S)	121.75 327.0 (S)		
						121.4 327.0 (W)		



2000	SMO	SMO	CATLY					TAROC	KRAIN
hdg 251°	R-160	R-195	INT					I-LAX	I-LAX
								33.7	37.2
								RADAR	RADAR
								9000	10000
								7000	8000
								5000	7000
								3600	5000
								1900	3600
								700	1900
								1 NM	0.8
								3.7 NM	5.6 NM
								4.4 NM	8.9 NM
								3.9 NM	3.4 NM
								3.4 NM	3.5 NM
CATEGORY	A		B		C		D		
S-ILS 25L	304/18		200 (200-1/2)						
S-LOC 25L	480/24		376 (400-1/2)		480/35		376 (400-3/4)		
SIDESTEP 25R	480/55		376 (400-1)		480-1 1/2		376 (400-1/2)		

ELEV 128	D	TDZE 25L 104	TDZE 25R 104
TDZ/CL Rwy's 6R, 7L, 24R, and 25L HIRL all Rwy's			
FAF to MAP 5.5 NM			
Knots	60	90	120 150 180
Min:Sec	5:30	3:40	2:45 2:12 1:50

SW-3, 14 MAY 2026 to 11 JUN 2026

SW-3, 14 MAY 2026 to 11 JUN 2026