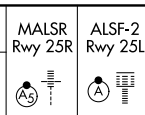


LOC/DME I-CFN <b>111.1</b> Chan 48	APP CRS <b>251°</b>	Rwy Ldg <b>11134</b>	25R <b>11095</b>	25L <b>11095</b>
		TDZE <b>104</b>	<b>104</b>	<b>104</b>
		Apt Elev <b>128</b>	<b>128</b>	<b>128</b>

# ILS or LOC RWY 25R

LOS ANGELES INTL (LAX)

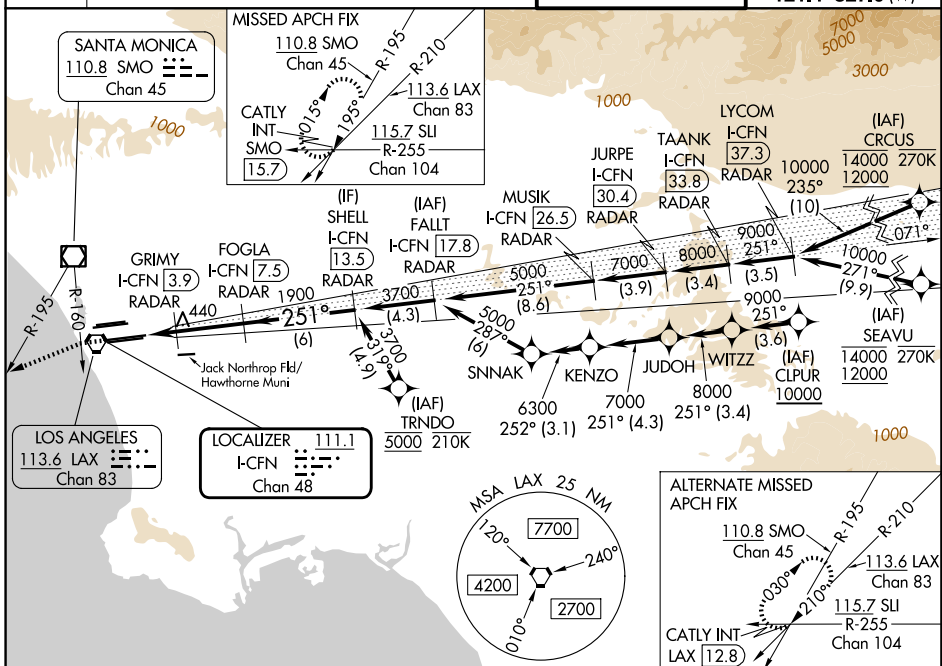
From CRCUS, SEAVU, TRNDO, CLPUR, RNAV 1-GPS required.  
DME or RADAR required.



**MISSED APPROACH:** Climb to 2000 on heading 251° until crossing SMO R-160 then left turn on heading 236° and SMO VOR/DME R-195 to CATLY INT/SMO 15.7 DME and hold.

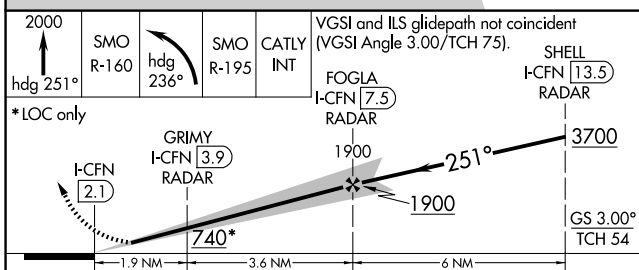
Simultaneous approach authorized. Simultaneous approach authorized with HHR. For inop ALS increase Sidestep 25L Cat C visibility to 1½ SM. #RVR 1800 authorized with use of FD or AP or HUD to DA.

D-ATIS <b>133.8</b>	SOCAL APP CON		LOS ANGELES TOWER	GND CON
	<b>124.3 363.2</b> (APCH from W)	<b>124.9 269.0</b> (090°-224°)	<b>133.9 239.3</b> (N)	<b>121.65 327.0</b> (N)
	<b>124.5 235.975</b> (225°-044°)	<b>128.5 360.7</b> (045°-089°)	<b>120.95 379.1</b> (S)	<b>121.4 327.0</b> (S)
				<b>121.4 327.0</b> (W)

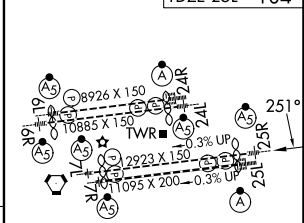


SW-3, 14 MAY 2026 to 11 JUN 2026

SW-3, 14 MAY 2026 to 11 JUN 2026



ELEV 128	TDZE 25R 104	TDZE 25L 104
----------	--------------	--------------



CATEGORY	A	B	C	D
S-ILS 25R#	304/24 200 (200-½)			
S-LOC 25R	700/24 596 (600-½)	700-1¼ 596 (600-1¼)		
SIDESTEP 25L	700/55 596 (600-1)	700-1¼ 596 (600-1¼)		700-1½ 596 (600-1½)

TDZ/CL Rwyys 6R, 7L, 24R, and 25L	HIRL all Rwyys				
FAF to MAP 5.5 NM					
Knots	60	90	120	150	180
Min:Sec	5:30	3:40	2:45	2:12	1:50