

LOC/DME I-MKZ	APP CRS	Rwy Ldg	7R	7L
109.9	071°		11095	11259
Chan 36		TDZE	128	128
		Apt Elev	128	128

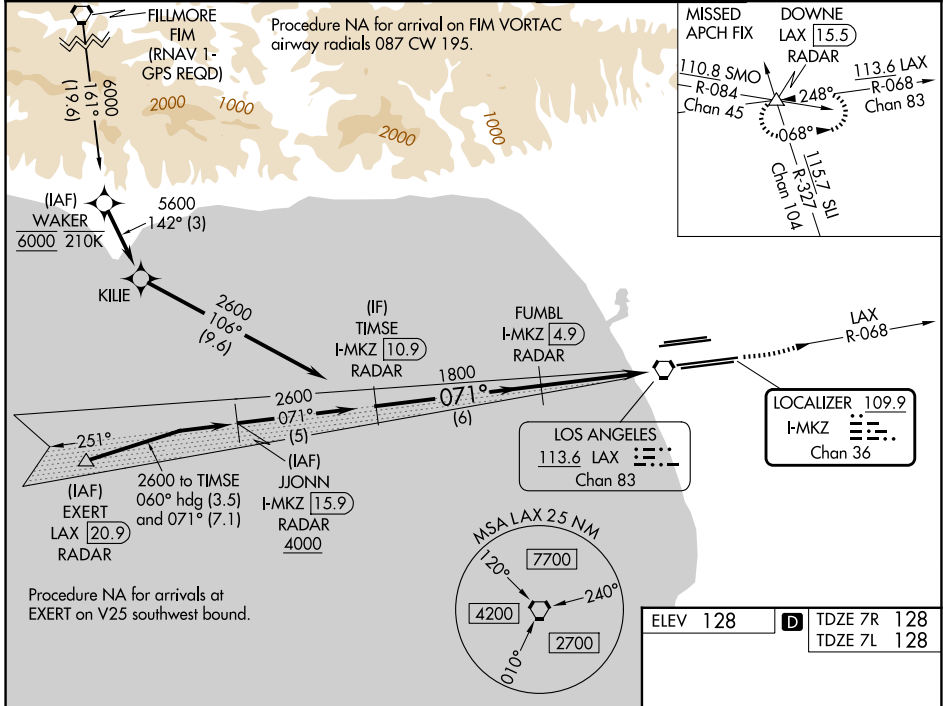
ILS or LOC RWY 7R

LOS ANGELES INTL (LAX)

Simultaneous approach authorized. DME or RADAR required. Inop table does not apply to Sidestep Rwy 7L Cats A and B. # RVR 1800 authorized with use of FD or AP or HUD to DA.

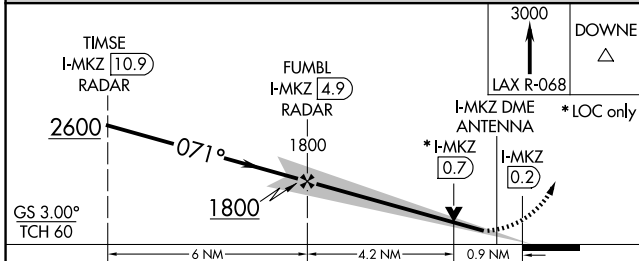
MALS Rwy 7R	MALS Rwy 7L	MISSED APPROACH: Climb to 3000 on LAX VORTAC R-068 to DOWNE INT/ LAX 15.5 DME/RADAR and hold.
-------------	-------------	---

D-ATIS	SOCAL APP CON	LOS ANGELES TOWER	GND CON
133.8	124.3 363.2 (APCH from W) 124.9 269.0 (090°-224°) 124.5 235.975 (225°-044°) 128.5 360.7 (045°-089°)	133.9 239.3 (N) 120.95 379.1 (S)	121.65 327.0 (N) 121.75 327.0 (S) 121.4 327.0 (W)

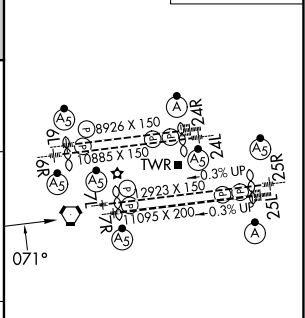


SW-3, 14 MAY 2026 to 11 JUN 2026

SW-3, 14 MAY 2026 to 11 JUN 2026



ELEV 128	TDZE 7R 128
	TDZE 7L 128



CATEGORY	A	B	C	D
S-ILS 7R#	328/24 200 (200-1/2)			
S-LOC 7R	460/24	332 (400-1/2)	460/26	332 (400-1/2)
SIDESTEP 7L	520/55 392 (400-1)		520-1 1/2 392 (400-1/2)	

TDZ/CL Rwy 6R, 7L, 24R, and 25L	HRL all Rwys				
FAF to MAP 5.1 NM					
Knots	60	90	120	150	180
Min:Sec	5:06	3:24	2:33	2:02	1:42