

# KYL0W ONE DEPARTURE (RNAV) (Departure Routes)

RNAV 1- DME/DME/IRU or GPS. From KYLOW on FICKY, GROGU and DINTY Transitions: GPS.

MCKEY, RIZIN, SCTRR and STOKD Transitions: RADAR required for non-GPS equipped aircraft.

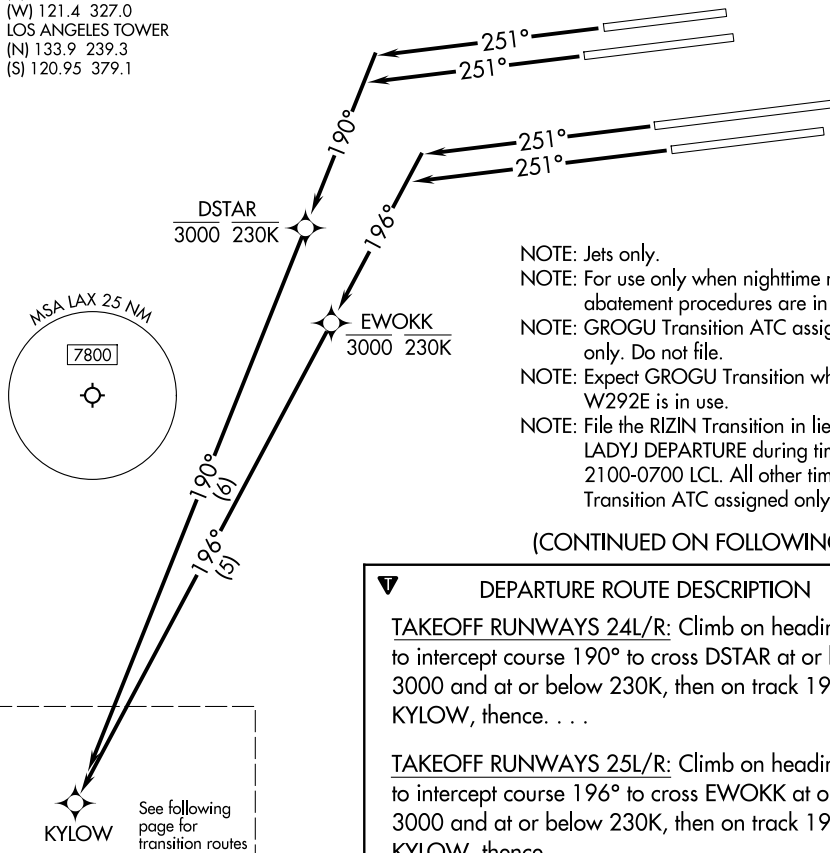
**TOP ALTITUDE:**  
**FICKY and GROGU TRANSITIONS: 14000;**  
**SCTRR, STOKD, MCKEY, DINTY, and RIZIN TRANSITIONS: FL230**

SOCAL DEP CON  
124.3 363.2  
D-ATIS DEP  
135.65  
CLNC DEL  
120.35 327.0  
CPDLC  
GND CON  
(N) 121.65 327.0  
(S) 121.75 327.0  
(W) 121.4 327.0  
LOS ANGELES TOWER  
(N) 133.9 239.3  
(S) 120.95 379.1

### TAKEOFF MINIMUMS

Rwy 24L: Standard with minimum climb of 280' per NM to 628.  
Rwy 24R: Standard with minimum climb of 260' per NM to 628.  
Rwy 25L: Standard with minimum climb of 230' per NM to 628.  
Rwy 25R: Standard with minimum climb of 260' per NM to 628.

SW-3, 14 MAY 2026 to 11 JUN 2026



- NOTE: Jets only.
- NOTE: For use only when nighttime noise abatement procedures are in effect.
- NOTE: GROGU Transition ATC assigned only. Do not file.
- NOTE: Expect GROGU Transition when W292E is in use.
- NOTE: File the RIZIN Transition in lieu of the LADYJ DEPARTURE during time periods 2100-0700 LCL. All other times RIZIN Transition ATC assigned only.

(CONTINUED ON FOLLOWING PAGE)

### DEPARTURE ROUTE DESCRIPTION

**TAKEOFF RUNWAYS 24L/R:** Climb on heading 251° to intercept course 190° to cross DSTAR at or below 3000 and at or below 230K, then on track 190° to KYLOW, thence. . . .

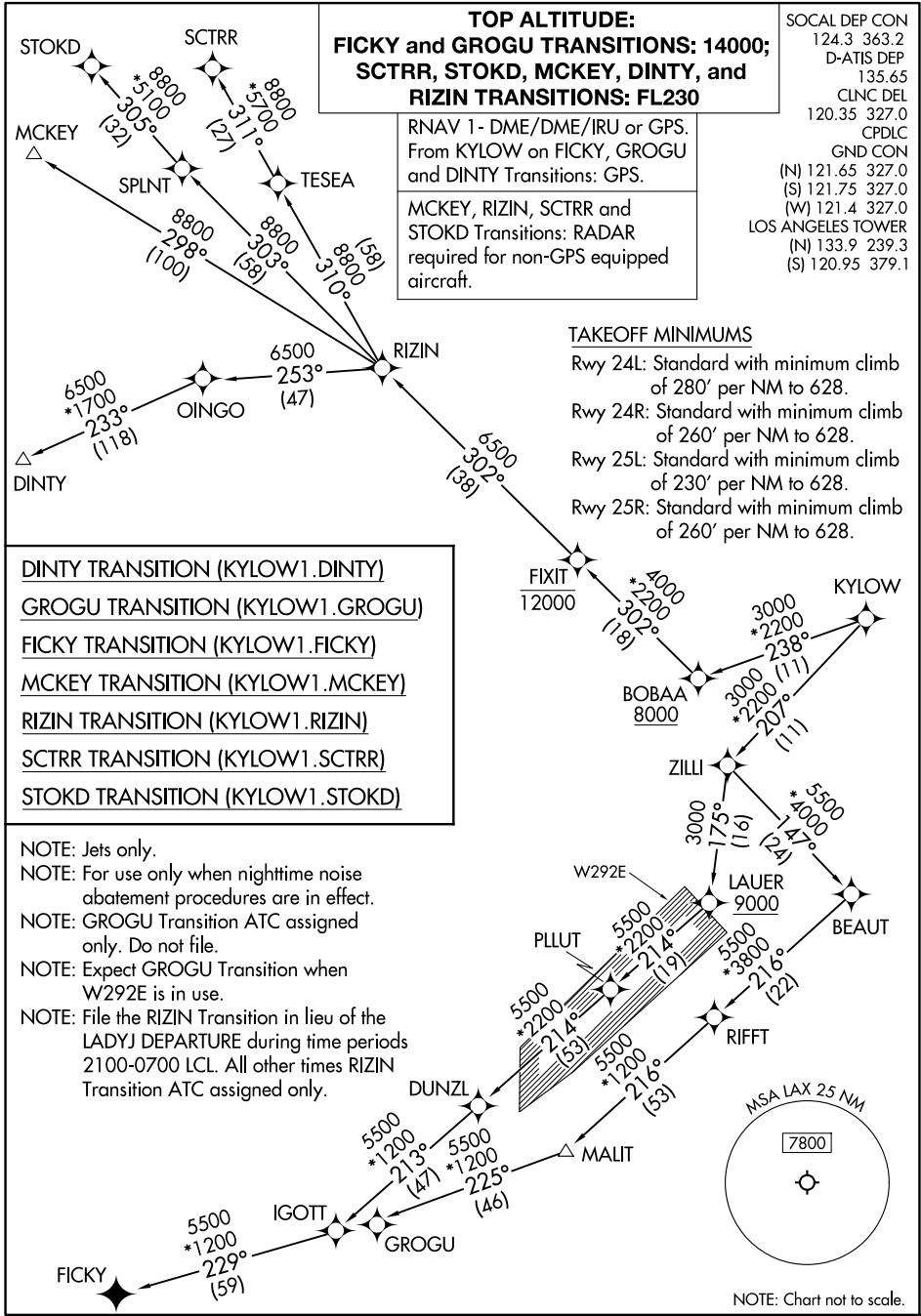
**TAKEOFF RUNWAYS 25L/R:** Climb on heading 251° to intercept course 196° to cross EWOKK at or below 3000 and at or below 230K, then on track 196° to KYLOW, thence. . . .

. . . .(transition). Departures on FICKY and GROGU Transitions maintain 14000. All other Transitions maintain FL230. Expect filed altitude 10 minutes after departure.

NOTE: Chart not to scale.

SW-3, 14 MAY 2026 to 11 JUN 2026

# KYLOW ONE DEPARTURE (RNAV) (Transition Routes)



SW-3, 14 MAY 2026 to 11 JUN 2026

SW-3, 14 MAY 2026 to 11 JUN 2026

# KYLOW ONE DEPARTURE (RNAV) (Transition Routes)