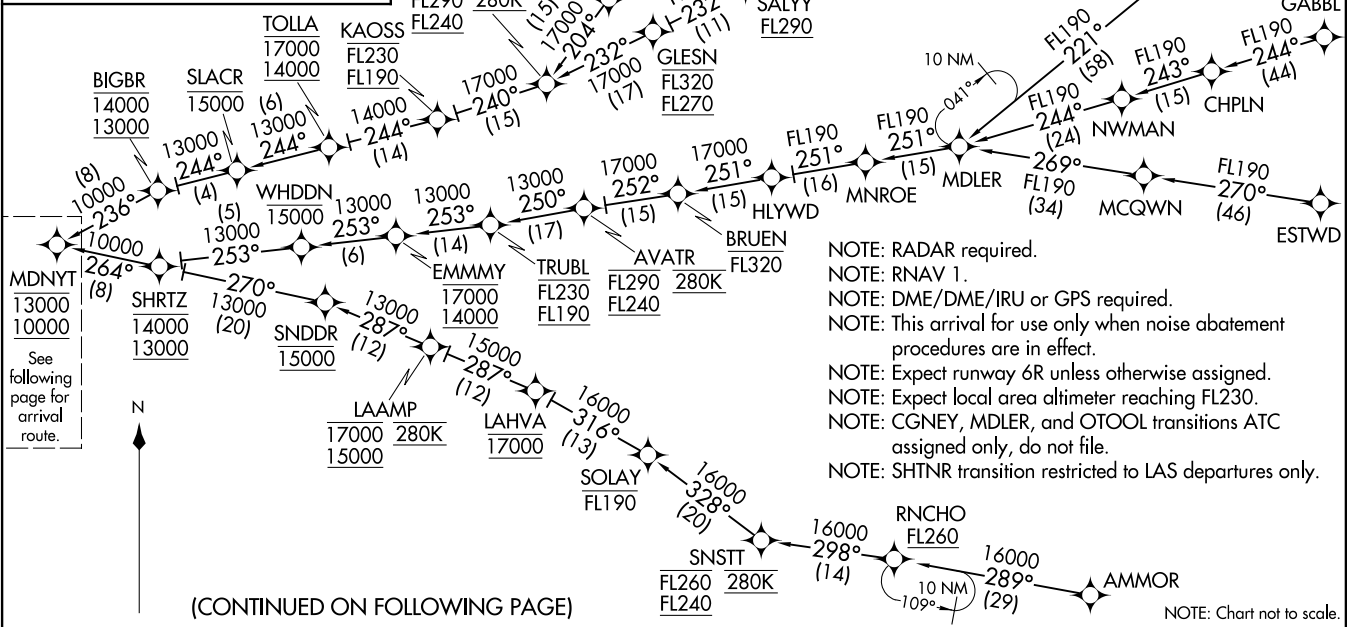


MDNYT TWO ARRIVAL (RNAV) Transition Routes
(MDNYT.MDNYT2) 120CT17

- AMMOR TRANSITION (AMMOR.MDNYT2)
- CGNEY TRANSITION (CGNEY.MDNYT2)
- DNERO TRANSITION (DNERO.MDNYT2)
- ESTWD TRANSITION (ESTWD.MDNYT2)
- FNND A TRANSITION (FNND A.MDNYT2)
- GABBL TRANSITION (GABBL.MDNYT2)
- HAKMN TRANSITION (HAKMN.MDNYT2)
- MDLER TRANSITION (MDLER.MDNYT2)
- OTOOL TRANSITION (OTOOL.MDNYT2)
- SHTNR TRANSITION (SHTNR.MDNYT2)

SOCAL APP CON
124.05 353.775
D-ATIS ARR
133.8
LOS ANGELES TOWER
(N) 133.9 239.3
(S) 120.95 379.1



- NOTE: RADAR required.
- NOTE: RNAV 1.
- NOTE: DME/DME/IRU or GPS required.
- NOTE: This arrival for use only when noise abatement procedures are in effect.
- NOTE: Expect runway 6R unless otherwise assigned.
- NOTE: Expect local area altimeter reaching FL230.
- NOTE: CGNEY, MDLER, and OTOOL transitions ATC assigned only, do not file.
- NOTE: SHTNR transition restricted to LAS departures only.

(CONTINUED ON FOLLOWING PAGE)

NOTE: Chart not to scale.

LOS ANGELES, CALIFORNIA
LOS ANGELES INTL (LAX)

(MDNYT.MDNYT2) 17285

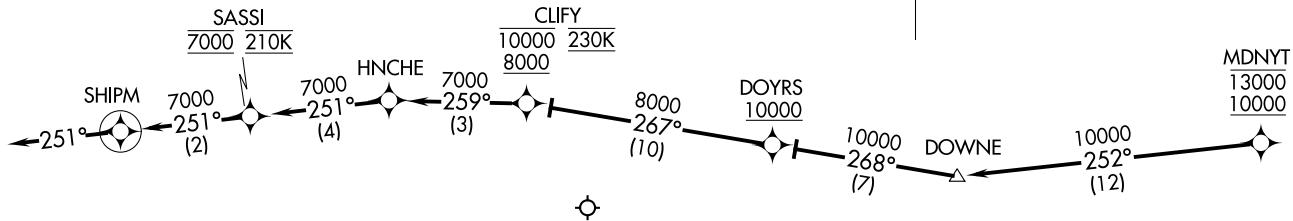
AL-237 (FAA)

LOS ANGELES INTL (LAX)
LOS ANGELES, CALIFORNIA

MDNVT.MDNVT2) 12OCT17

MDNVT TWO ARRIVAL (RNAV) Arrival Routes

SOCAL APP CON
124.05 353.775
D-ATIS ARR
133.8
LOS ANGELES TOWER
(N) 133.9 239.3
(S) 120.95 379.1



- NOTE: RADAR required.
- NOTE: RNAV 1.
- NOTE: DME/DME/IRU or GPS required.
- NOTE: This arrival for use only when noise abatement procedures are in effect.
- NOTE: Expect runway 6R unless otherwise assigned.
- NOTE: Expect local area altimeter reaching FL230.

NOTE: Chart not to scale.

ARRIVAL ROUTE DESCRIPTION

LANDING RUNWAYS 6L/R: From MDNVT on track 252° to DOWNE, then on track 268° to cross DOYRS at or above 10000, then on track 267° to cross CLIFY between 8000 and 10000 and at 230K, then on track 259° to HNCHE, then on track 251° to cross SASSI at 7000 and at 210K, then on track 251° to SHIPM, then on track 251°. Expect RADAR vectors to ILS or RNAV (RNP) RWY 6R final approach course.

LOST COMMUNICATIONS: In the event of lost communication proceed on the RNAV (RNP) RWY 6R or ILS or LOC RWY 6R approach.

LOS ANGELES, CALIFORNIA
LOS ANGELES INTL (LAX)

(MDNVT.MDNVT2) 17285

AL-237 (FAA)

LOS ANGELES INTL (LAX)
LOS ANGELES, CALIFORNIA