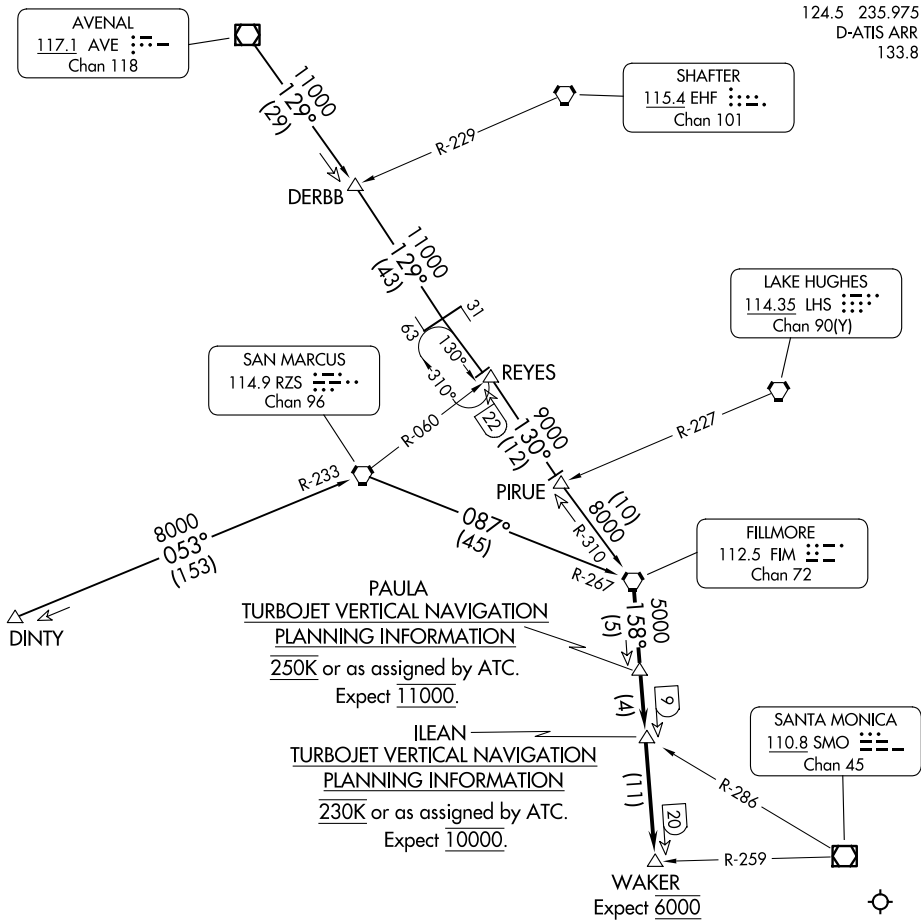


# MOORPARK FOUR ARRIVAL

AL-237 (FAA)

LOS ANGELES INTL (LAX)  
LOS ANGELES, CALIFORNIA

SOCAL APP CON  
124.5 235.975  
D-ATIS ARR  
133.8



### PAULA TURBOJET VERTICAL NAVIGATION PLANNING INFORMATION

250K or as assigned by ATC.  
Expect 11000.

### ILEAN TURBOJET VERTICAL NAVIGATION PLANNING INFORMATION

230K or as assigned by ATC.  
Expect 10000.

NOTE: DME or RADAR required.

NOTE: Chart not to scale.

### ARRIVAL ROUTE DESCRIPTION

AVENAL TRANSITION (AVE.MOOR4): From over AVE VOR/DME on AVE R-129 and FIM R-310 to FIM VORTAC. Thence. . .

DERBB TRANSITION (DERBB.MOOR4): From over DERBB INT on AVE R-129 and FIM R-310 to FIM VORTAC. Thence. . .

DINTY TRANSITION (DINTY.MOOR4): From over DINTY INT on RZS R-233 to RZS VORTAC. Then on RZS R-087 and FIM R-267 to FIM VORTAC. Thence. . .

. . . From over FIM VORTAC via FIM R-158 to WAKER INT. For Runways 6L/R or 7L/R: From WAKER INT expect vector to final approach course for Los Angeles Intl Airport.

# MOORPARK FOUR ARRIVAL

SW-3, 14 MAY 2026 to 11 JUN 2026

SW-3, 14 MAY 2026 to 11 JUN 2026