

**TOP ALTITUDE:  
17000**

SOCAL DEP CON  
124.3 363.2  
D-ATIS DEP  
135.65  
CLNC DEL  
120.35 327.0  
CPDLC  
GND CON  
(N) 121.65 327.0  
(S) 121.75 327.0  
(W) 121.4 327.0  
LOS ANGELES TOWER  
(N) 133.9 239.3  
(S) 120.95 379.1

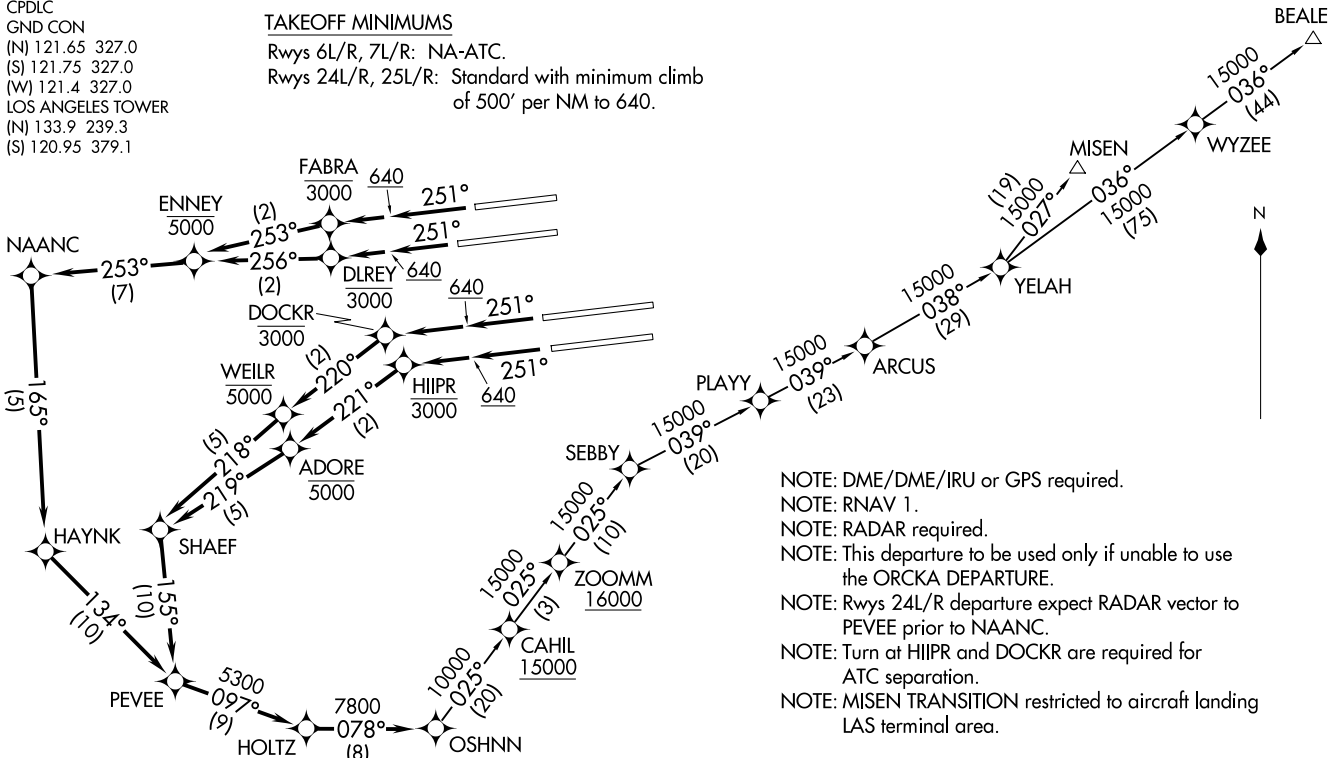
**TAKEOFF MINIMUMS**

Rwys 6L/R, 7L/R: NA-ATC.  
Rwys 24L/R, 25L/R: Standard with minimum climb  
of 500' per NM to 640.

OSHHNN1.OSHHNN 17JUN21

OSHNN ONE DEPARTURE (RNAV)

LOS ANGELES, CALIFORNIA  
LOS ANGELES INTL (LAX)



- NOTE: DME/DME/IRU or GPS required.
- NOTE: RNAV 1.
- NOTE: RADAR required.
- NOTE: This departure to be used only if unable to use the ORCA DEPARTURE.
- NOTE: Rwys 24L/R departure expect RADAR vector to PEVEE prior to NAANC.
- NOTE: Turn at HIIPR and DOCKR are required for ATC separation.
- NOTE: MISEN TRANSITION restricted to aircraft landing LAS terminal area.

(CONTINUED ON FOLLOWING PAGE)

NOTE: Chart not to scale.

OSHHNN1.OSHHNN 25331

AL-237 (FAA)

LOS ANGELES INTL (LAX)  
LOS ANGELES, CALIFORNIA



DEPARTURE ROUTE DESCRIPTION

TAKEOFF RUNWAY 24L: Climb on heading 251° to 640, then climb direct to cross DLREY at or below 3000, then on track 256° to cross ENNEY at or below 5000, then on depicted route to OSHNN, thence. . . .

TAKEOFF RUNWAY 24R: Climb on heading 251° to 640, then climb direct to cross FABRA at or below 3000, then on track 253° to cross ENNEY at or below 5000, then on depicted route to OSHNN, thence. . . .

TAKEOFF RUNWAY 25L: Climb on heading 251° to 640, then climb direct to cross HIIPR at or below 3000, then on track 221° to cross ADORE at or below 5000, then on depicted route to OSHNN, thence. . . .

TAKEOFF RUNWAY 25R: Climb on heading 251° to 640, then climb direct to cross DOCKR at or below 3000, then on track 220° to cross WEILR at or below 5000, then on depicted route to OSHNN, thence. . . .

. . . .on (transition). Maintain 17000. Expect filed altitude five minutes after departure.

BEALE TRANSITION (OSHNN1.BEALE)

MISEN TRANSITION (OSHNN1.MISEN)

SW-3, 14 MAY 2026 to 11 JUN 2026

SW-3, 14 MAY 2026 to 11 JUN 2026