

# RNAV (RNP) Z RWY 24L


LOS ANGELES INTL (LAX)

APP CRS	Rwy Ldg	<b>9483</b>
<b>251°</b>	TDZE	<b>123</b>
	Apt Elev	<b>128</b>

**RNP AR APCH.**

Simultaneous approach authorized. Simultaneous approach authorized with HHR.  
 For uncompensated Baro-VNAV systems, procedure NA below 5°C or above 54°C. For inop ALS, increase RNP 0.15 all Cats visibility to 1 3/8 SM.

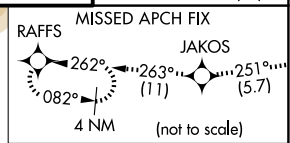
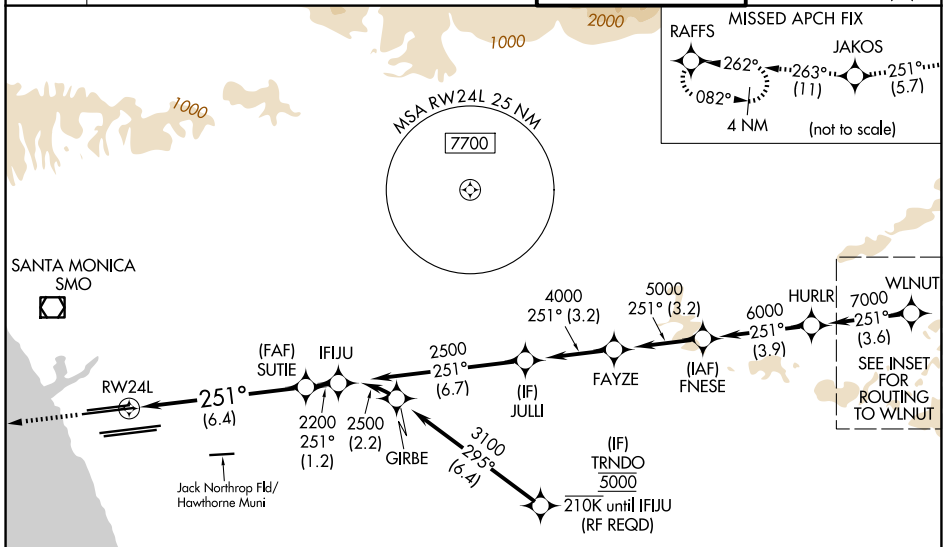
**MALSRR**



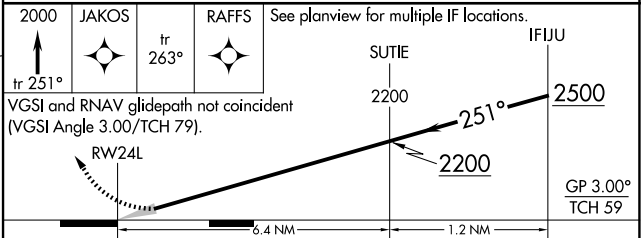
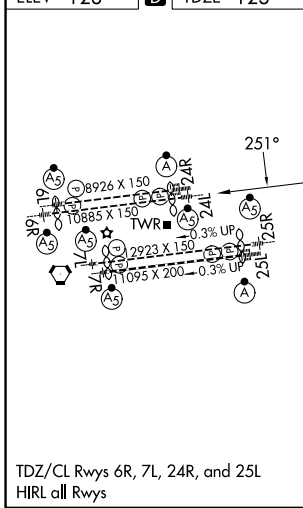
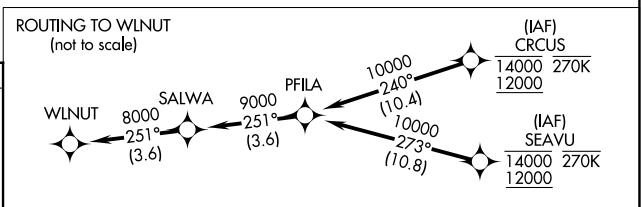
**MISSED APPROACH:** Climb to 2000 on track 251° to JAKOS and track 263° to RAFFS and hold.

D-ATIS	<b>124.3 363.2</b> (APCH from W)	SOCAL APP CON	<b>124.9 269.0</b> (090°-224°)
<b>133.8</b>	<b>124.5 235.975</b> (225°-044°)		<b>128.5 360.7</b> (045°-089°)

LOS ANGELES TOWER	<b>133.9 239.3</b> (N)	GND CON	<b>121.65 327.0</b> (N)
	<b>120.95 379.1</b> (S)		<b>121.75 327.0</b> (S)
			<b>121.4 327.0</b> (W)



ELEV	<b>128</b>	<b>D</b>	TDZE	<b>123</b>
------	------------	----------	------	------------



CATEGORY	A	B	C	D
RNP 0.15 DA		545/35	422 (500-5%)	
RNP 0.30 DA		592/45	469 (500-7%)	

**AUTHORIZATION REQUIRED**

SW-3, 14 MAY 2026 to 11 JUN 2026

SW-3, 14 MAY 2026 to 11 JUN 2026