

| | | |
|-------------|----------|--------------|
| APP CRS | Rwy Ldg | 11095 |
| 251° | TDZE | 104 |
| | Apt Elev | 128 |

RNAV (RNP) Z RWY 25L

LOS ANGELES INTL (LAX)

RNP AR APCH.

▼ GPS required. For uncompensated Baro-VNAV systems, procedure NA below 5°C or above 54°C. Simultaneous approach authorized. Simultaneous approach authorized with HHR.

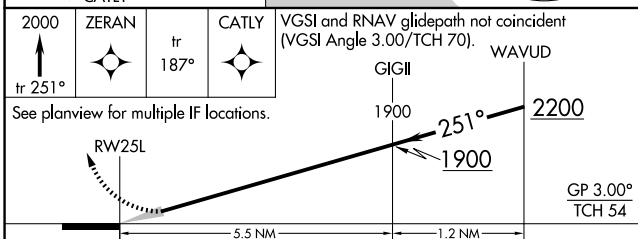
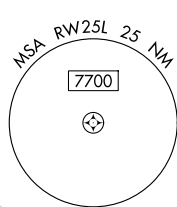
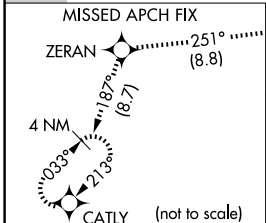
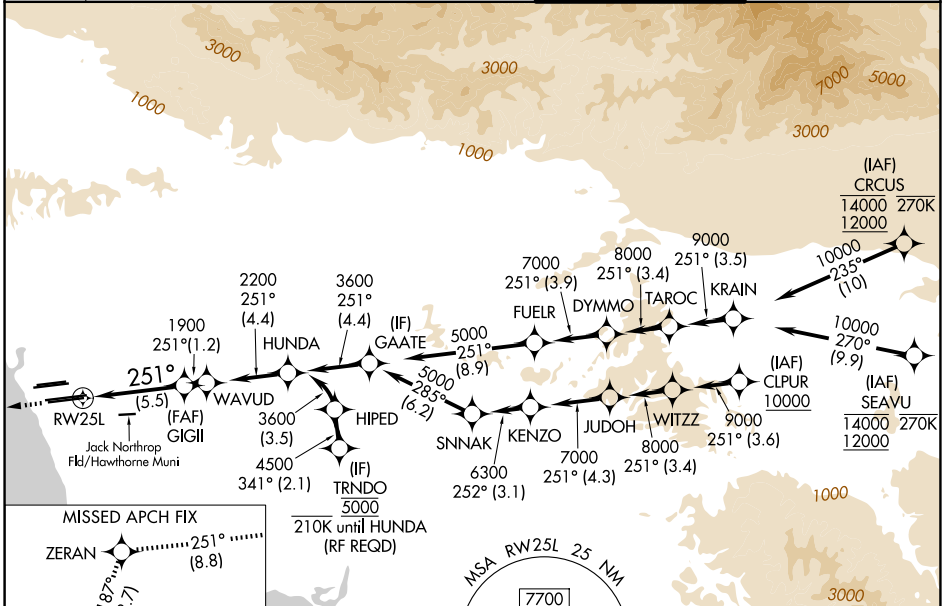
ALSF-2



MISSED APPROACH: Climb to 2000 on track 251° to ZERAN and on track 187° to CATLY and hold.

| | | |
|--------------|----------------------------------|--------------------------------|
| D-ATIS | SOCAL APP CON | |
| 133.8 | 124.3 363.2 (APCH from W) | 124.9 269.0 (090°-224°) |
| | 124.5 235.975 (225°-044°) | 128.5 360.7 (045°-089°) |

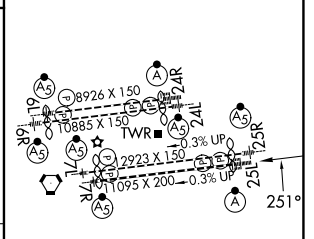
| | |
|--------------------------|-------------------------|
| LOS ANGELES TOWER | GND CON |
| 133.9 239.3 (N) | 121.65 327.0 (N) |
| 120.95 379.1 (S) | 121.75 327.0 (S) |
| | 121.4 327.0 (W) |



| | | | | |
|-------------|---|--------|---------------------------|---|
| CATEGORY | A | B | C | D |
| RNP 0.15 DA | | 445/30 | 341 (400- $\frac{5}{8}$) | |
| RNP 0.30 DA | | 543/50 | 439 (500-1) | |

AUTHORIZATION REQUIRED

| | |
|----------|-------------------|
| ELEV 128 | D TDZE 104 |
|----------|-------------------|



TDZ/CL Rwws 6R, 7L, 24R, and 25L
HIRL all Rwws

SW-3, 14 MAY 2026 to 11 JUN 2026

SW-3, 14 MAY 2026 to 11 JUN 2026