

APP CRS	Rwy Ldg	8566
071°	TDZE	119
	Apt Elev	128

RNAV (RNP) Z RWY 6L

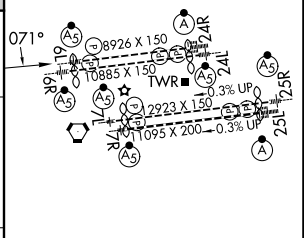
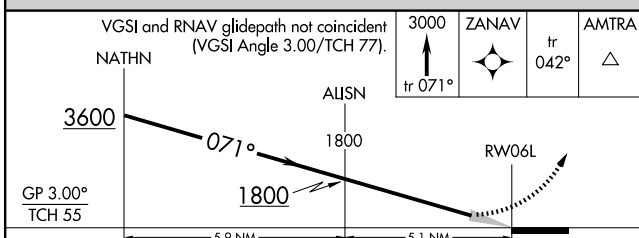
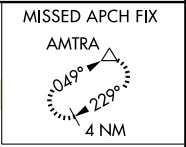
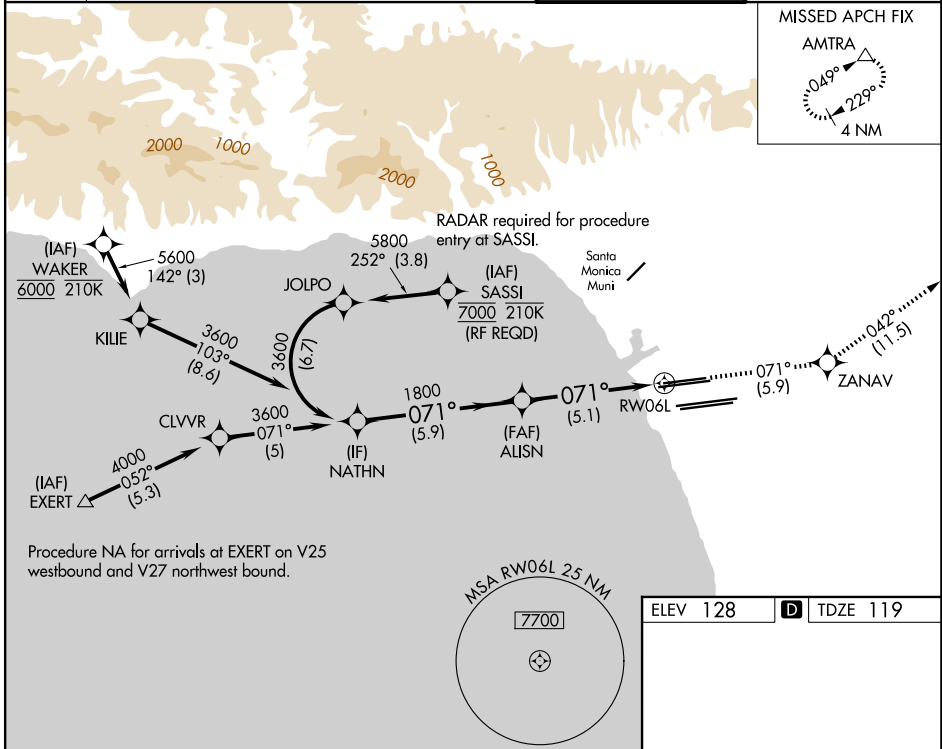
LOS ANGELES INTL (LAX)

▽ For uncompensated Baro-VNAV systems, procedure NA below 5°C (41°F) or above 54°C (130°F). Simultaneous approach authorized. GPS required. For inop MALSR, increase RNP 0.30 all Cats visibility to RVR 6000.

MALSR 	MISSED APPROACH: Climb to 3000 on track 071° to ZANAV and on track 042° to AMTRA and hold.

D-ATIS 133.8	SOCAL APP CON				LOS ANGELES TOWER		GND CON	
	124.3	363.2	(APCH from W)	124.9	269.0	(090°-224°)	121.65	327.0 (N)
	124.5	235.975	(225°-044°)	128.5	360.7	(045°-089°)	121.75	327.0 (S)
							121.4	327.0 (W)

LOS ANGELES TOWER		GND CON	
133.9	239.3 (N)	121.65	327.0 (N)
120.95	379.1 (S)	121.75	327.0 (S)
		121.4	327.0 (W)



CATEGORY	A	B	C	D
RNP 0.30 DA	484/40 365 (400-¾)			

ELEV 128	D TDZE 119
----------	-------------------

AUTHORIZATION REQUIRED

TDZ/CL Rwy's 6R, 7L, 24R, and 25L
HIRL all Rwy's

SW-3, 14 MAY 2026 to 11 JUN 2026

SW-3, 14 MAY 2026 to 11 JUN 2026