

APP CRS 071°	Rwy Ldg TDZE Apt Elev	9748 116 128
------------------------	-----------------------------	---

RNAV (RNP) Z RWY 6R

LOS ANGELES INTL (LAX)

For uncompensated Baro-VNAV systems, procedure NA below 5°C (41°F) or above 54°C (130°F). GPS required. Simultaneous approach authorized. For inop ALS, increase RNP 0.30 all Cats visibility to RVR 6000.

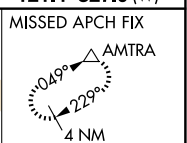
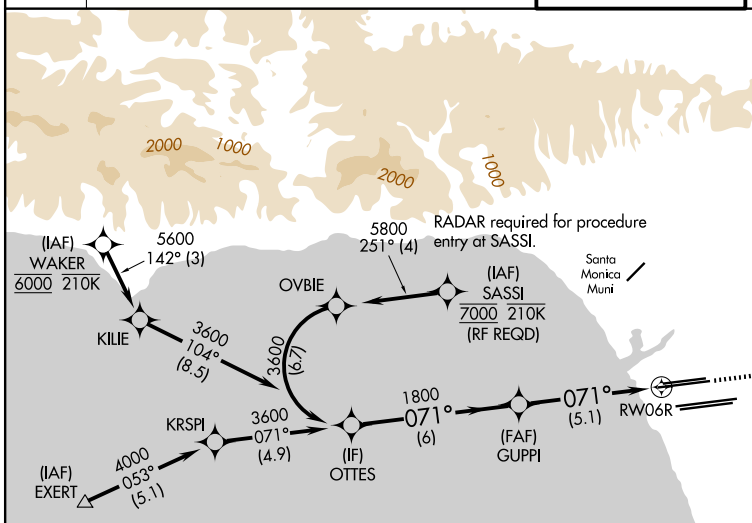


MISSED APPROACH: Climb to 3000 on track 071° to ZIMLO and on track 042° to AMTRA and hold.

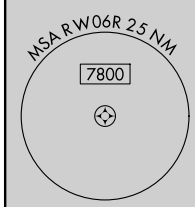
D-ATIS 133.8	SOCAL APP CON		LOS ANGELES TOWER		GND CON
124.3 363.2 (APCH from W)	124.9 269.0 (090°-224°)	133.9 239.3 (N)	121.65 327.0 (N)	121.75 327.0 (S)	121.4 327.0 (W)
124.5 235.975 (225°-044°)	128.5 360.7 (045°-089°)	120.95 379.1 (S)			

LOS ANGELES TOWER	
133.9 239.3 (N)	120.95 379.1 (S)

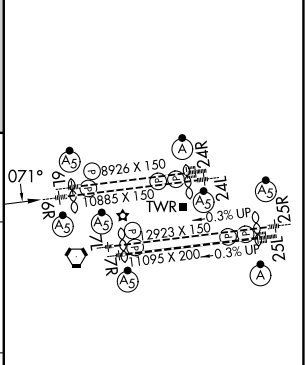
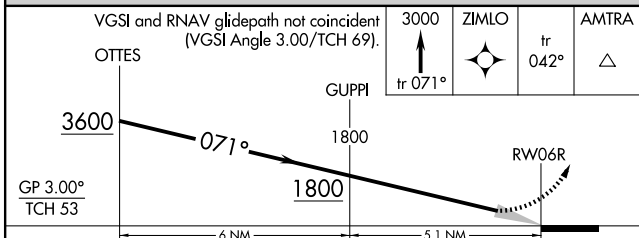
GND CON	
121.65 327.0 (N)	121.75 327.0 (S)
121.4 327.0 (W)	



Procedure NA for arrivals at EXERT on V25 westbound and V27 northwest bound.



ELEV 128	D TDZE 116
----------	-------------------



CATEGORY	A	B	C	D
RNP 0.30 DA	471/40 355 (400-¾)			

AUTHORIZATION REQUIRED

TDZ/CL Rwy 6R, 7L, 24R, and 25L
HIRL all Rwy's

SW-3, 14 MAY 2026 to 11 JUN 2026

SW-3, 14 MAY 2026 to 11 JUN 2026