

APP CRS <b>071°</b>	Rwy Ldg <b>11095</b> TDZE <b>128</b> Apt Elev <b>128</b>
------------------------	--

# RNAV (RNP) Z RWY 7R

LOS ANGELES INTL (LAX)

**▽** For uncompensated Baro-VNAV systems, procedure NA below 5°C (41°F) or above 54°C (130°F). For inop MALSR, increase RNP 0.11 all Cats visibility to RVR 4500. Simultaneous approach authorized.

MALSR

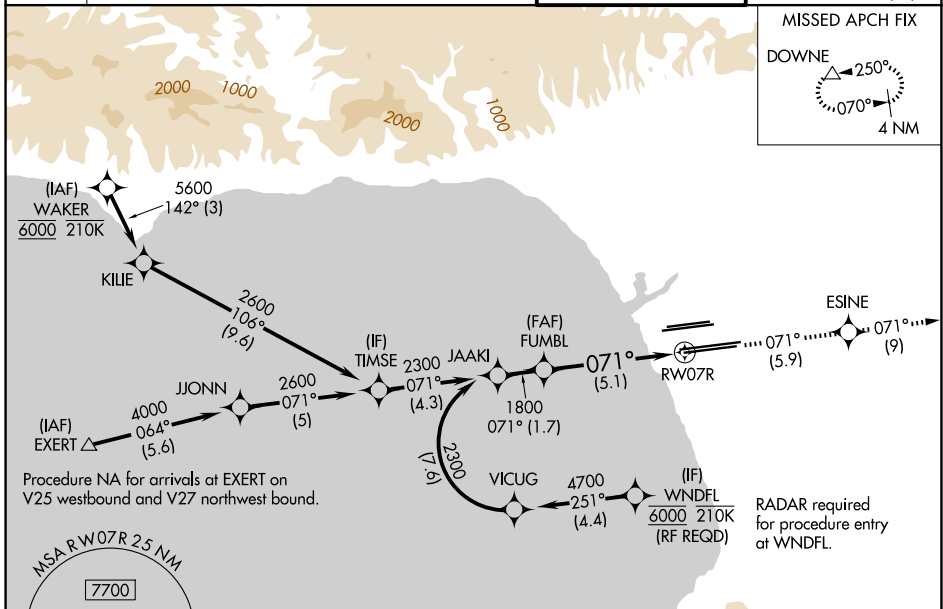


MISSED APPROACH: Climb to 3000 on track 071° to ESINE and on track 071° to DOWNE and hold.

D-ATIS <b>133.8</b>	SOCAL APP CON <b>124.3 363.2</b> (APCH from W) <b>124.9 269.0</b> (090°-224°) <b>124.5 235.975</b> (225°-044°) <b>128.5 360.7</b> (045°-089°)
------------------------	---

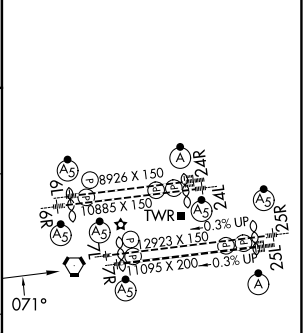
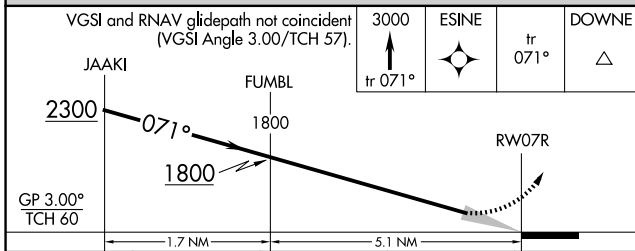
LOS ANGELES TOWER <b>133.9 239.3</b> (N) <b>120.95 379.1</b> (S)
--

GND CON <b>121.65 327.0</b> (N) <b>121.75 327.0</b> (S) <b>121.4 327.0</b> (W)
---



**GPS REQUIRED**

ELEV 128	<b>D</b> TDZE 128
----------	-------------------



CATEGORY	A	B	C	D
RNP 0.11 DA		414/24	286 (300-½)	
RNP 0.30 DA		538/45	410 (500-¾)	

**AUTHORIZATION REQUIRED**

TDZ/CL Rwy 6R, 7L, 24R, and 25L  
HIRL all Rwys

SW-3, 14 MAY 2026 to 11 JUN 2026

SW-3, 14 MAY 2026 to 11 JUN 2026