

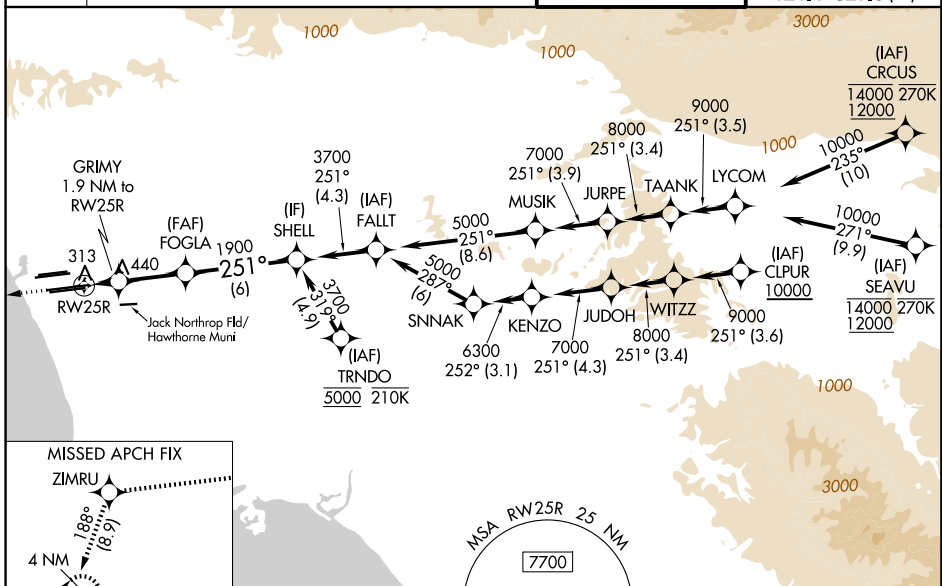
WAAS CH 49007 W25B	APP CRS 251°	Rwy Ldg 11134 TDZE 104 Apt Elev 128
--	------------------------	--

RNAV (GPS) Y RWY 25R

LOS ANGELES INTL (LAX)

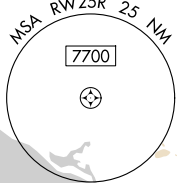
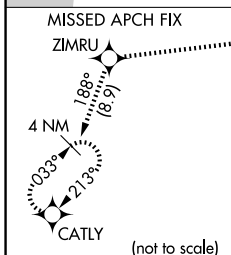
RNP APCH. ▼ For uncompensated Baro-VNAV systems, LNAV/VNAV NA below 5°C or above 54°C. Simultaneous approach authorized. Simultaneous approach authorized with HHR. LNAV procedure NA during simultaneous operations. Use of FD or AP required during simultaneous operations. #RVR 1800 authorized with use of FD or AP or HUD to DA.	MALSR 	MISSED APPROACH: Climb to 2000 direct ZIMRU and track 188° to CATLY and hold.
---	-----------	--

D-ATIS 133.8	SOCAL APP CON 124.3 363.2 (APCH from W) 124.9 269.0 (090°-224°) 124.5 235.975 (225°-044°) 128.5 360.7 (045°-089°)	LOS ANGELES TOWER 133.9 239.3 (N) 120.95 379.1 (S)	GND CON 121.65 327.0 (N) 121.75 327.0 (S) 121.4 327.0 (W)
------------------------	---	--	---

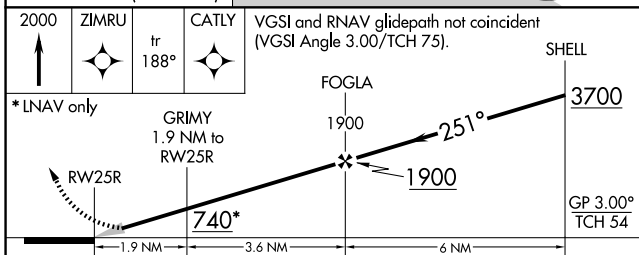


SW-3, 14 MAY 2026 to 11 JUN 2026

SW-3, 14 MAY 2026 to 11 JUN 2026



ELEV 128	TDZE 104
----------	----------



CATEGORY	A	B	C	D
LPV DA#		304/24	200 (200-1/2)	
LNAV/VNAV DA		578/60	474 (500-1/4)	
LNAV MDA	640/24	536 (600-1/2)	640/55	536 (600-1)

