

|  |                        |   |
|--|------------------------|---|
| WAAS<br>CH <b>61207</b><br><b>W06B</b> | APP CRS<br><b>071°</b> | Rwy Ldg <b>9748</b><br>TDZE <b>116</b><br>Apt Elev <b>128</b> |
|--|------------------------|---|

# RNAV (GPS) Y RWY 6R

LOS ANGELES INTL (LAX)

▼ For uncompensated Baro-VNAV systems, LNAV/VNAV NA below 5°C (41°F) or above 54°C (130°F). DME/DME RNP-0.3 NA. For inop ALS, increase LNAV/VNAV all Cats visibility to RVR 4500, LNAV Cat C and D visibility to RVR 5500. Simultaneous approach authorized. LNAV procedure NA during simultaneous operations. Use of FD or AP providing RNAV track guidance required during simultaneous operations. # RVR 1800 authorized with use of FD or AP or HUD to DA.

MALSR

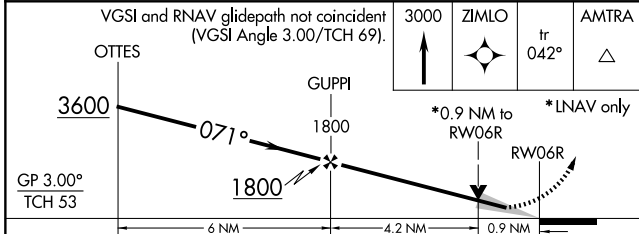
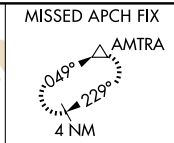
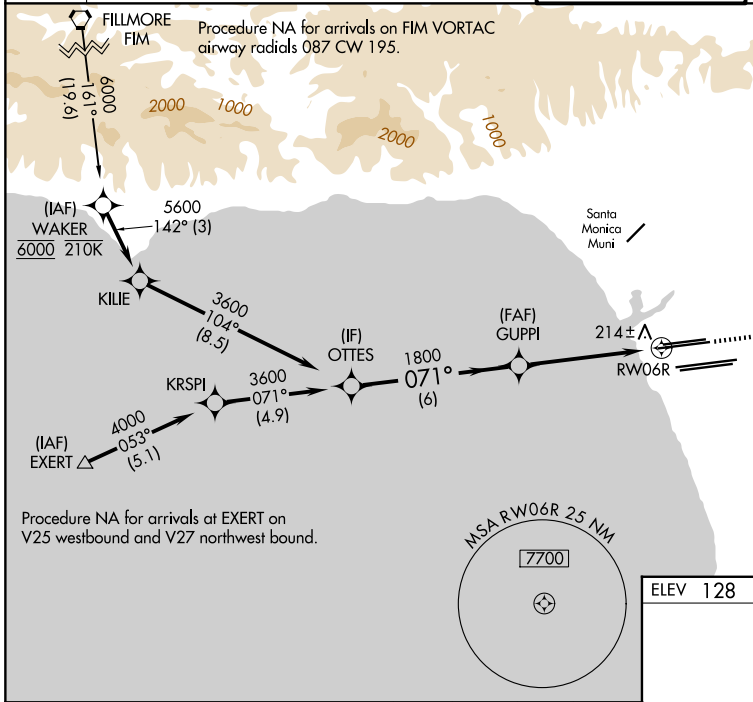


MISSED APPROACH:  
Climb to 3000 direct ZIMLO and track 042° to AMTRA and hold.

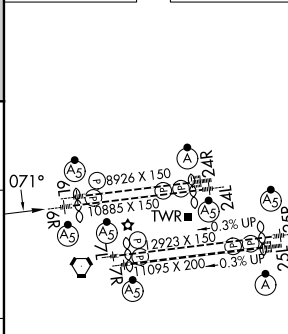
|                        |                                  |                                |
|------------------------|----------------------------------|--------------------------------|
| D-ATIS<br><b>133.8</b> | SOCAL APP CON                    |                                |
|                        | <b>124.3 363.2</b> (APCH from W) | <b>124.9 269.0</b> (090°-224°) |
|                        | <b>124.5 235.975</b> (225°-044°) | <b>128.5 360.7</b> (045°-089°) |

|                         |
|-------------------------|
| LOS ANGELES TOWER       |
| <b>133.9 239.3</b> (N)  |
| <b>120.95 379.1</b> (S) |

|                         |
|-------------------------|
| GND CON                 |
| <b>121.65 327.0</b> (N) |
| <b>121.75 327.0</b> (S) |
| <b>121.4 327.0</b> (W)  |



|          |                   |
|----------|-------------------|
| ELEV 128 | <b>D</b> TDZE 116 |
|----------|-------------------|



|              |        |             |             |             |
|--------------|--------|-------------|-------------|-------------|
| CATEGORY     | A      | B           | C           | D           |
| LPV DA#      |        | 316/24      | 200 (200-½) |             |
| LNAV/VNAV DA |        | 398/24      | 282 (300-½) |             |
| LNAV MDA     | 480/24 | 364 (400-½) | 480/35      | 364 (400-¾) |

TDZ/CL Rwy 6R, 7L, 24R, and 25L  
HIRL all Rwy's

SW-3, 14 MAY 2026 to 11 JUN 2026

SW-3, 14 MAY 2026 to 11 JUN 2026