

WAAS CH 42504 W07A	APP CRS 071°	Rwy Ldg 11259 TDZE 128 Apt Elev 128
--	------------------------	--

RNAV (GPS) Y RWY 7L

LOS ANGELES INTL (LAX)

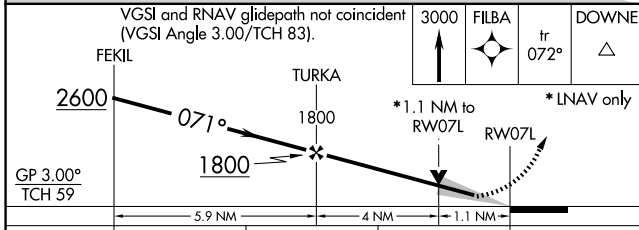
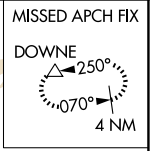
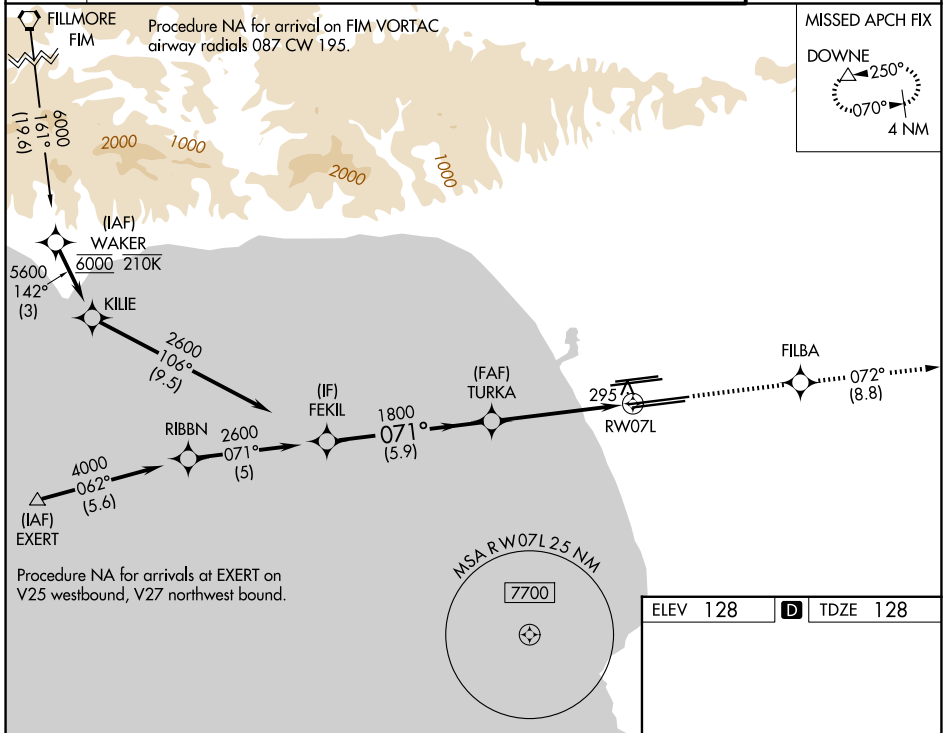
▼ For uncompensated Baro-VNAV systems, LNAV/VNAV NA below 5°C (41°F) or above 54°C (130°F). DME/DME RNP -0.3 NA. LNAV procedure NA during simultaneous operations. Use of FD or AP providing RNAV track guidance required during simultaneous operations. Simultaneous approach authorized.

MALSR

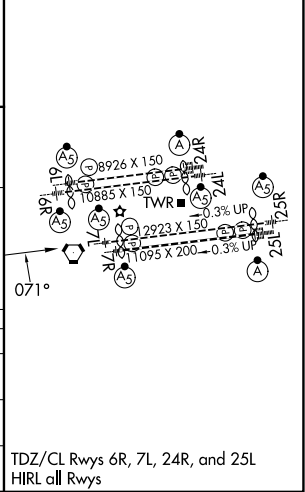


MISSED APPROACH: Climb to 3000 direct FILBA and on track 072° to DOWNE and hold.

D-ATIS 133.8	SOCAL APP CON 124.3 363.2 (APCH from W) 124.9 269.0 (090°-224°) 124.5 235.975 (225°-044°) 128.5 360.7 (045°-089°)	LOS ANGELES TOWER 133.9 239.3 (N) 120.95 379.1 (S)	GND CON 121.65 327.0 (N) 121.75 327.0 (S) 121.4 327.0 (W)
------------------------	---	--	---



ELEV 128	D TDZE 128
----------	-------------------



CATEGORY	A	B	C	D
LPV DA		344/18	216 (300-½)	
LNAV/VNAV DA		464/30	336 (400-¾)	
LNAV MDA	560/24	432 (500-½)	560/40	432 (500-¾)

SW-3, 14 MAY 2026 to 11 JUN 2026

SW-3, 14 MAY 2026 to 11 JUN 2026