

(SEBBY3.DAG) 25331


SEBBY THREE DEPARTURE

AL-237 (FAA)

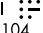
LOS ANGELES INTL (LAX)
LOS ANGELES, CALIFORNIA

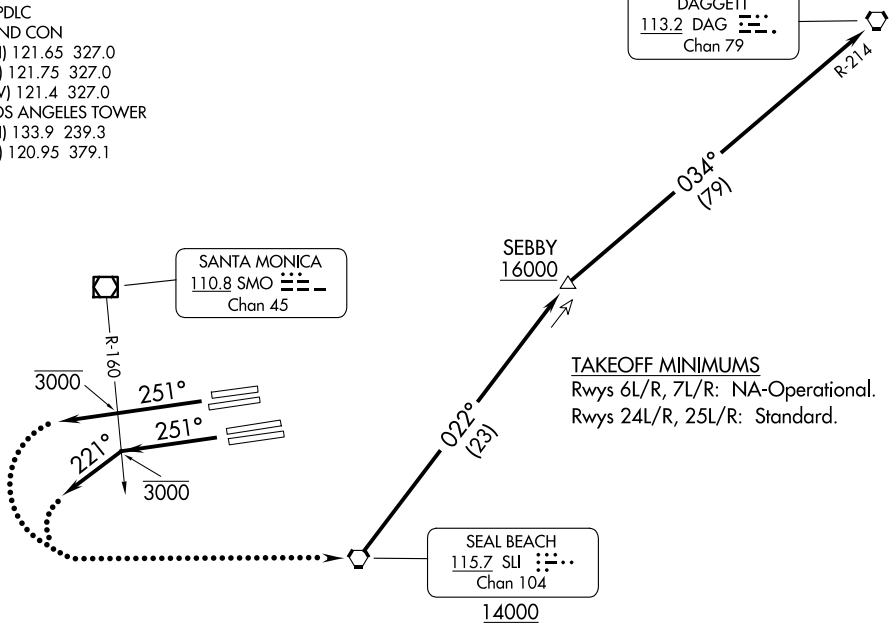
SOCAL DEP CON
124.3 363.2
D-ATIS DEP
135.65
CLNC DEL
120.35 327.0
CPDLC
GND CON
(N) 121.65 327.0
(S) 121.75 327.0
(W) 121.4 327.0
LOS ANGELES TOWER
(N) 133.9 239.3
(S) 120.95 379.1

**TOP ALTITUDE:
ASSIGNED BY ATC**

DAGGETT
113.2 DAG 
Chan 79

SANTA MONICA
110.8 SMO 
Chan 45

SEAL BEACH
115.7 SLI 
Chan 104



TAKEOFF MINIMUMS
Rwys 6L/R, 7L/R: NA-Operational.
Rwys 24L/R, 25L/R: Standard.

**TURN MANDATORY FOR
ATC SEPARATION**

South complex turn at SMO R-160 to 221° is required for ATC separation.

NOTE: DME and RADAR required.

NOTE: Chart not to scale.

SW-3, 14 MAY 2026 to 11 JUN 2026

SW-3, 14 MAY 2026 to 11 JUN 2026



DEPARTURE ROUTE DESCRIPTION

TAKEOFF RUNWAYS 24L/R: Climb on heading 251° to cross SMO VOR/DME R-160 at or below 3000, thence. . . .

TAKEOFF RUNWAYS 25L/R: Climb on heading 251°, at the SMO VOR/DME R-160 turn left heading 221°, cross SMO R-160 at or below 3000, thence. . . .

. . . .on RADAR vectors to cross SLI VORTAC at or above 14000, then on SLI R-022 to cross SEBBY/23 DME FIX at or above 16000. Then on DAG R-214 to DAG VORTAC. All aircraft expect further clearance to filed flight level five minutes after departure.

LOST COMMUNICATIONS: If not in contact with Departure Control within five minutes after departure, turn left direct SLI VORTAC and proceed on assigned route, climb to FL230 or filed altitude whichever is lower. Aircraft filed FL240 or above climb to filed altitude ten minutes after departure.

SEBBY THREE DEPARTURE

(SEBBY3.DAG) 19JUL18

LOS ANGELES, CALIFORNIA
LOS ANGELES INTL (LAX)