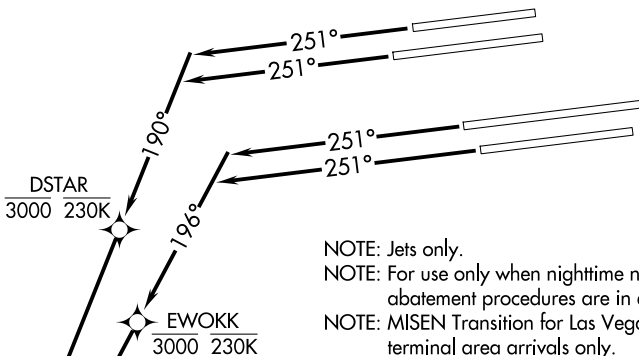
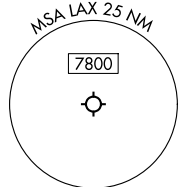


# STHBY ONE DEPARTURE (RNAV) (Departure Routes)

RNAV 1 - DME/DME/IRU or GPS.  
RADAR required for non-GPS equipped aircraft.

**TOP ALTITUDE:**  
**OTAYY and TCATE TRANSITIONS:**  
**ASSIGNED BY ATC;**  
**BEALE, CLEEE, MISEN AND**  
**CNERY TRANSITIONS: 17000**

SOCAL DEP CON  
124.3 363.2  
D-ATIS DEP  
135.65  
CLNC DEL  
120.35 327.0  
CPDLC  
GND CON  
(N) 121.65 327.0  
(S) 121.75 327.0  
(W) 121.4 327.0  
LOS ANGELES TOWER  
(N) 133.9 239.3  
(S) 120.95 379.1

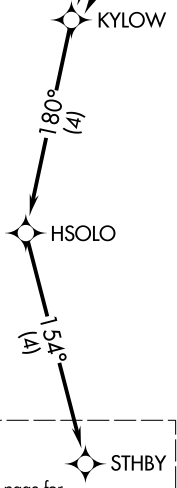


NOTE: Jets only.  
NOTE: For use only when nighttime noise abatement procedures are in effect.  
NOTE: MISEN Transition for Las Vegas terminal area arrivals only.

### TAKEOFF MINIMUMS

Rwy 24L: Standard with minimum climb of 280' per NM to 628.  
Rwy 24R: Standard with minimum climb of 260' per NM to 628.  
Rwy 25L: Standard with minimum climb of 230' per NM to 628.  
Rwy 25R: Standard with minimum climb of 260' per NM to 628.

(CONTINUED ON FOLLOWING PAGE) NOTE: Chart not to scale.



### DEPARTURE ROUTE DESCRIPTION

**TAKEOFF RUNWAYS 24L/R:** Climb on heading 251° to intercept course 190° to cross DSTAR at or below 3000 and at or below 230K, then on track 190° to KYLOW, thence . . . .

**TAKEOFF RUNWAYS 25L/R:** Climb on heading 251° to intercept course 196° to cross EWOKK at or below 3000 and at or below 230K, then on track 196° to KYLOW, thence . . . .

. . . . on track 180° to HSOLO, then on track 154° to STHBY, then on (transition). Departures on OTAYY and TCATE Transitions maintain ATC assigned altitude. Departures on BEALE, CLEEE, MISEN and CNERY Transitions maintain 17000, expect filed altitude 10 minutes after departure.

See following page for transition routes.

STHBY ONE DEPARTURE (RNAV) (Transition Routes)  
(STHBY1.STHBY) 11 JUL24

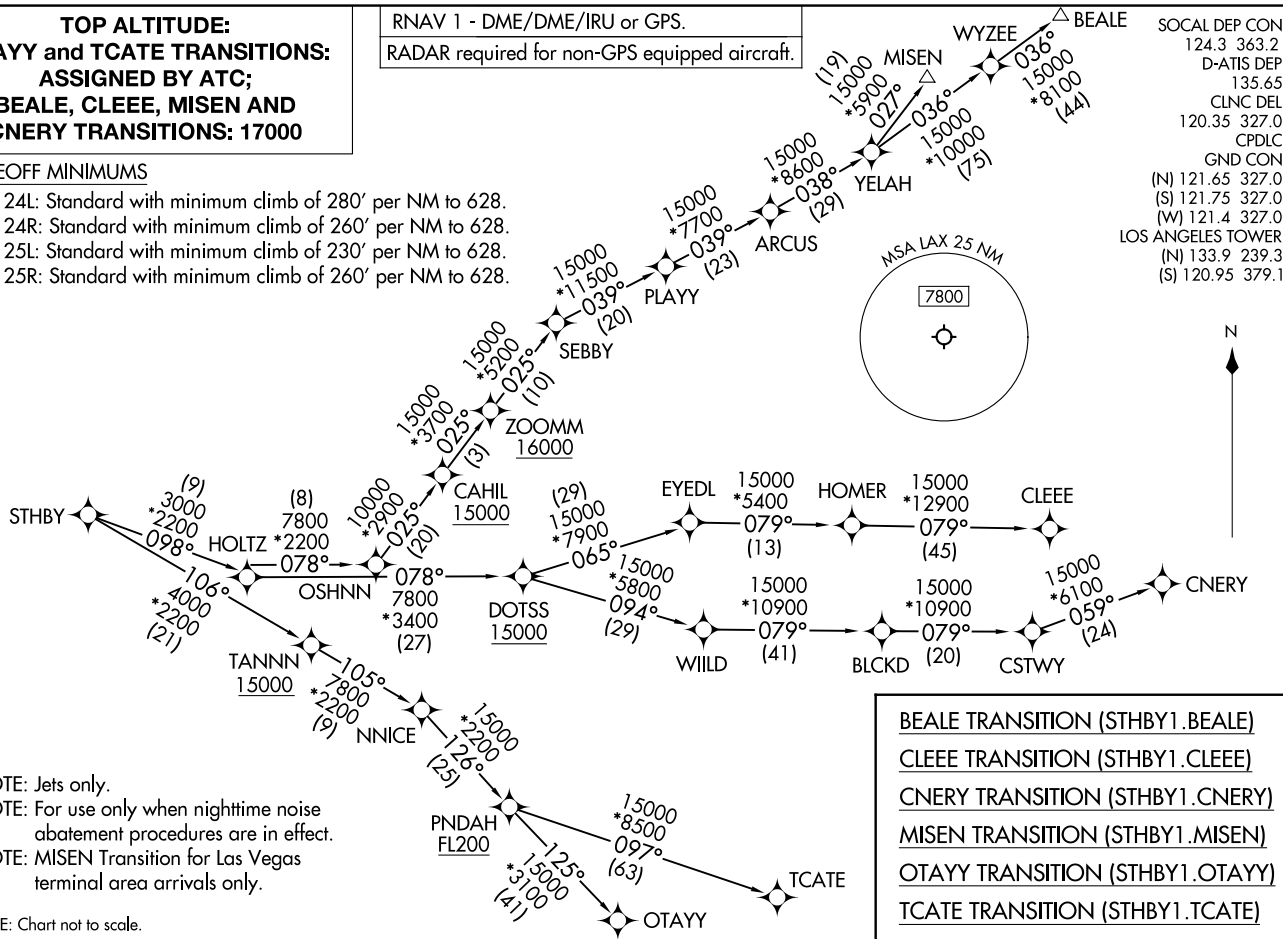
LOS ANGELES, CALIFORNIA  
LOS ANGELES INTL (LAX)

**TOP ALTITUDE:  
OTAYY and TCATE TRANSITIONS:  
ASSIGNED BY ATC;  
BEALE, CLEEE, MISEN AND  
CNERY TRANSITIONS: 17000**

RNAV 1 - DME/DME/IRU or GPS.  
RADAR required for non-GPS equipped aircraft.

**TAKEOFF MINIMUMS**

- Rwy 24L: Standard with minimum climb of 280' per NM to 628.
- Rwy 24R: Standard with minimum climb of 260' per NM to 628.
- Rwy 25L: Standard with minimum climb of 230' per NM to 628.
- Rwy 25R: Standard with minimum climb of 260' per NM to 628.



- NOTE: Jets only.
- NOTE: For use only when nighttime noise abatement procedures are in effect.
- NOTE: MISEN Transition for Las Vegas terminal area arrivals only.

NOTE: Chart not to scale.

- BEALE TRANSITION (STHBY1.BEALE)
- CLEEE TRANSITION (STHBY1.CLEEE)
- CNERY TRANSITION (STHBY1.CNERY)
- MISEN TRANSITION (STHBY1.MISEN)
- OTAYY TRANSITION (STHBY1.OTAYY)
- TCATE TRANSITION (STHBY1.TCATE)

SOCAL DEP CON	124.3 363.2
D-ATIS DEP	135.65
CLNC DEL	120.35 327.0
CPDLC	GND CON
(N)	121.65 327.0
(S)	121.75 327.0
(W)	121.4 327.0
LOS ANGELES TOWER	(N) 133.9 239.3
	(S) 120.95 379.1

(STHBY1.STHBY) 25331  
AL-237 (FAA)

LOS ANGELES INTL (LAX)  
LOS ANGELES, CALIFORNIA