

ZILLI FIVE DEPARTURE (RNAV)
(ZILLI5 ZILLI) 23FEB23

SOCAL DEP CON
124.3 363.2
D-ATIS DEP
135.65
CLNC DEL
120.35 327.0
CPDLC
GND CON
(N) 121.65 327.0
(S) 121.75 327.0
(W) 121.4 327.0
LOS ANGELES TOWER
(N) 133.9 239.3
(S) 120.95 379.1

RNAV 1- GPS.
RADAR required.

**TOP ALTITUDE:
14000**

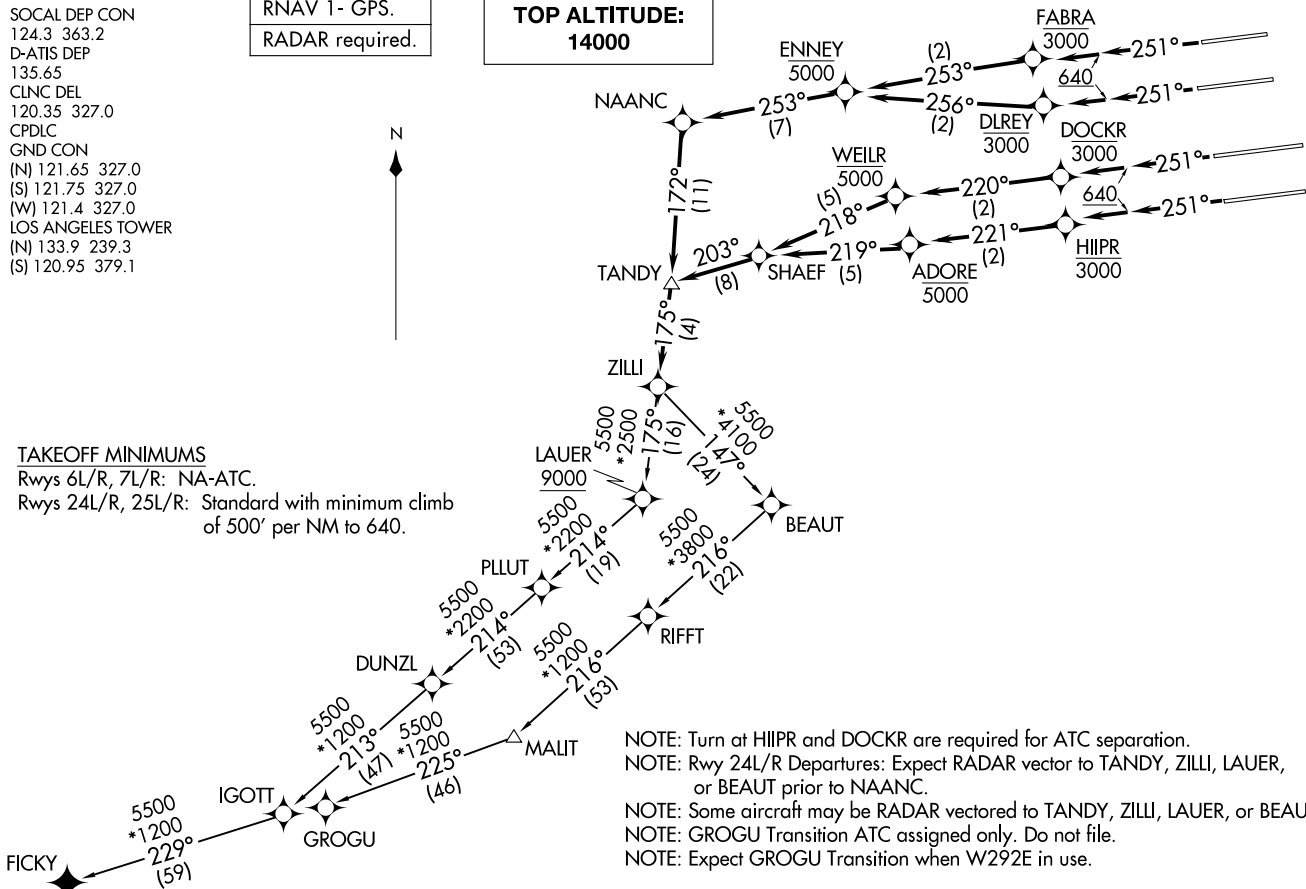


TAKEOFF MINIMUMS

Rwys 6L/R, 7L/R: NA-ATC.

Rwys 24L/R, 25L/R: Standard with minimum climb of 500' per NM to 640.

LOS ANGELES, CALIFORNIA
LOS ANGELES INTL (LAX)



NOTE: Turn at HIIPR and DOCKR are required for ATC separation.
NOTE: Rwy 24L/R Departures: Expect RADAR vector to TANDY, ZILLI, LAUER, or BEAUT prior to NAANC.
NOTE: Some aircraft may be RADAR vectored to TANDY, ZILLI, LAUER, or BEAUT.
NOTE: GROGU Transition ATC assigned only. Do not file.
NOTE: Expect GROGU Transition when W292E in use.

(CONTINUED ON FOLLOWING PAGE)

NOTE: Chart not to scale.

(ZILLI5 ZILLI) 23531
ZILLI FIVE DEPARTURE (RNAV)

AL-237 (FAA)

LOS ANGELES INTL (LAX)
LOS ANGELES, CALIFORNIA



DEPARTURE ROUTE DESCRIPTION

TAKEOFF RUNWAY 24L: Climb on heading 251° to 640, then climb direct to cross DLREY at or below 3000, then on track 256° to cross ENNEY at or below 5000, then on depicted route to ZILLI, thence

TAKEOFF RUNWAY 24R: Climb on heading 251° to 640, then climb direct to cross FABRA at or below 3000, then on track 253° to cross ENNEY at or below 5000, then on depicted route to ZILLI, thence

TAKEOFF RUNWAY 25L: Climb on heading 251° to 640, then climb direct to cross HIIIPR at or below 3000, then on track 221° to cross ADORE at or below 5000, then on depicted route to ZILLI, thence

TAKEOFF RUNWAY 25R: Climb on heading 251° to 640, then climb direct to cross DOCKR at or below 3000, then on track 220° to cross WEILR at or below 5000, then on depicted route to ZILLI, thence

. . . . on (transition). Maintain 14000, expect filed altitude five minutes after departure.

FICKY TRANSITION (ZILLI5.FICKY)

GROGU TRANSITION (ZILLI5.GROGU)

SW-3, 14 MAY 2026 to 11 JUN 2026

SW-3, 14 MAY 2026 to 11 JUN 2026