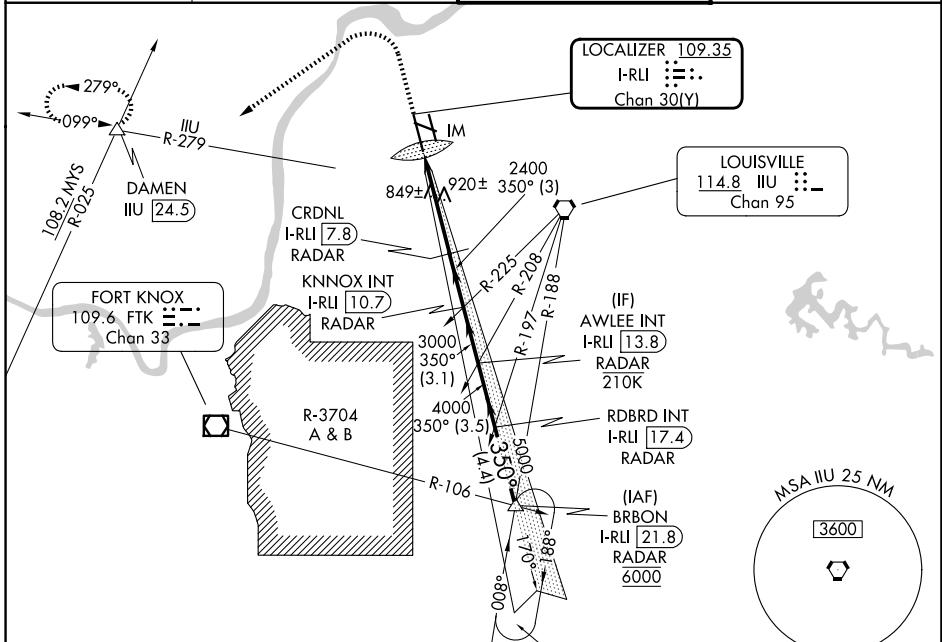


LOC/DME I-RLI 109.35	APP CRS 350°	Rwy Ldg TDZE 10000 464
Chan 30(Y)		Apt Elev 501

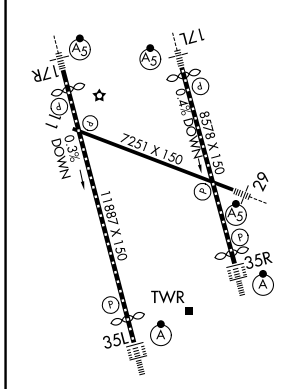
ILS RWY 35L (SA CAT I)

LOUISVILLE MUHAMMAD ALI INTL (SDF)

RADAR required.		ALSIF-2	MISSED APPROACH: Climb to 1000 then climbing left turn to 4000 on heading 240° and IJU VORTAC R-279 to DAMEN INT/ IJU 24.5 DME and hold.
▼ Simultaneous approach authorized. Requires specific OPSPEC, MSPEC, or LOA approval.			
D-ATIS 118.725	LOUISVILLE APP CON 132.075 327.0	LOUISVILLE TOWER 124.2 257.8	GND CON 121.7 348.6



ELEV 501	D	TDZE 464
----------	----------	----------



HIRL all Rwys
TDZL/RCLS Rwys 17L, 17R, 35L, and 35R

1000	4000	DAMEN IJU R-279	VGSI and ILS glidepath not coincident (VGSI Angle 3.00/TCH 75).	AWLEE INT I-RLI 13.8
↑	hdg 240°			RADAR
		KNOX INT I-RLI 10.7		
		RADAR		
		CRDNL I-RLI 7.8		
		RADAR		
		IM		
		2400		
		3000		
		4000		
		350°		
		GS 3.00°		
		TCH 59		
CATEGORY	A	B	C	D
S-ILS 35L	RA 154/14 150 DA 614			

SA CATEGORY I ILS - SPECIAL AIRCREW & AIRCRAFT CERTIFICATION REQUIRED

SE-1, 14 MAY 2026 to 11 JUN 2026

SE-1, 14 MAY 2026 to 11 JUN 2026