

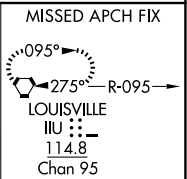
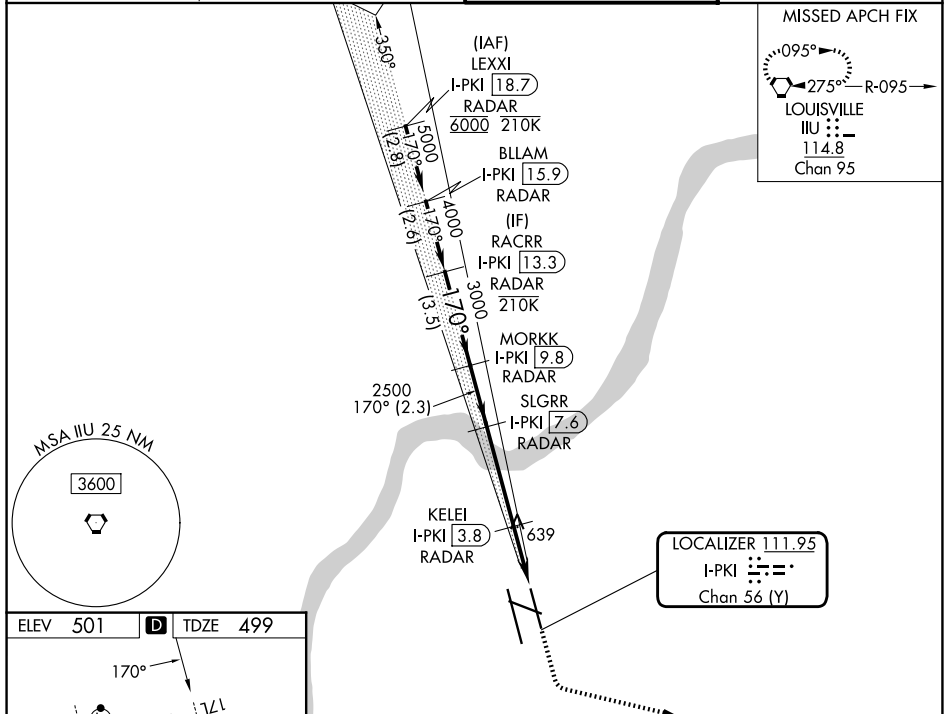
LOC/DME I-PKI 111.95	APP CRS 170°	Rwy Ldg 7800
Chan 56 (Y)	TDZE 499	Apt Elev 501

ILS or LOC RWY 17L

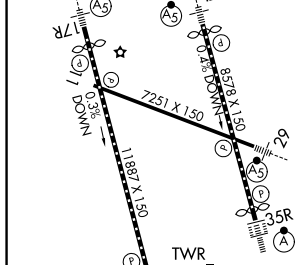
LOUISVILLE MUHAMMAD ALI INTL (SDF)

DME or RADAR required. RADAR required for procedure entry.		MALSR 	MISSED APPROACH: Climb to 1000 then climbing left turn to 3000 direct IJU VORTAC, continue climb-in-hold to 3000.
Simultaneous approach authorized. Circling Rwy 11 NA at night. For inop ALS, increase S-LOC 17L Cat C/D visibility to 1 3/8 SM.			

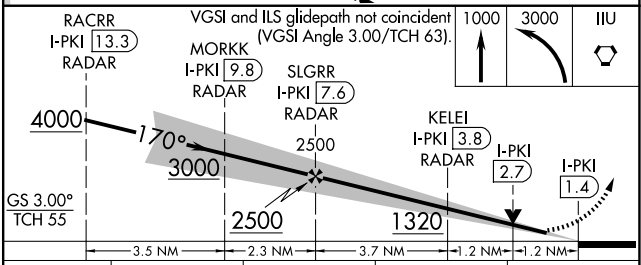
D-ATIS 118.725	LOUISVILLE APP CON 132.075 327.0	LOUISVILLE TOWER 124.2 257.8	GND CON 121.7 348.6
--------------------------	--	--	-------------------------------



ELEV 501	D	TDZE 499
----------	----------	----------



FAF to MAP 6.1 NM					
Knots	60	90	120	150	180
Min:Sec	6:06	4:04	3:03	2:26	2:02



CATEGORY	A	B	C	D
S-ILS 17L	699/18		200 (200-1/2)	
S-LOC 17L	1000/24	501 (500-1/2)	1000/55	501 (500-1)
CIRCLING	1040-1 539 (600-1)	1140-1 639 (700-1)	1160-1 3/4 659 (700-1 3/4)	1400-3 899 (900-3)

SE-1, 14 MAY 2026 to 11 JUN 2026

SE-1, 14 MAY 2026 to 11 JUN 2026