

LOC/DME I-JJM 110.55 Chan 42 (Y)	APP CRS 350°	Rwy Ldg 7800 TDZE 479 Apt Elev 501
--	------------------------	---

ILS or LOC RWY 35R

LOUISVILLE MUHAMMAD ALI INTL (SDF)

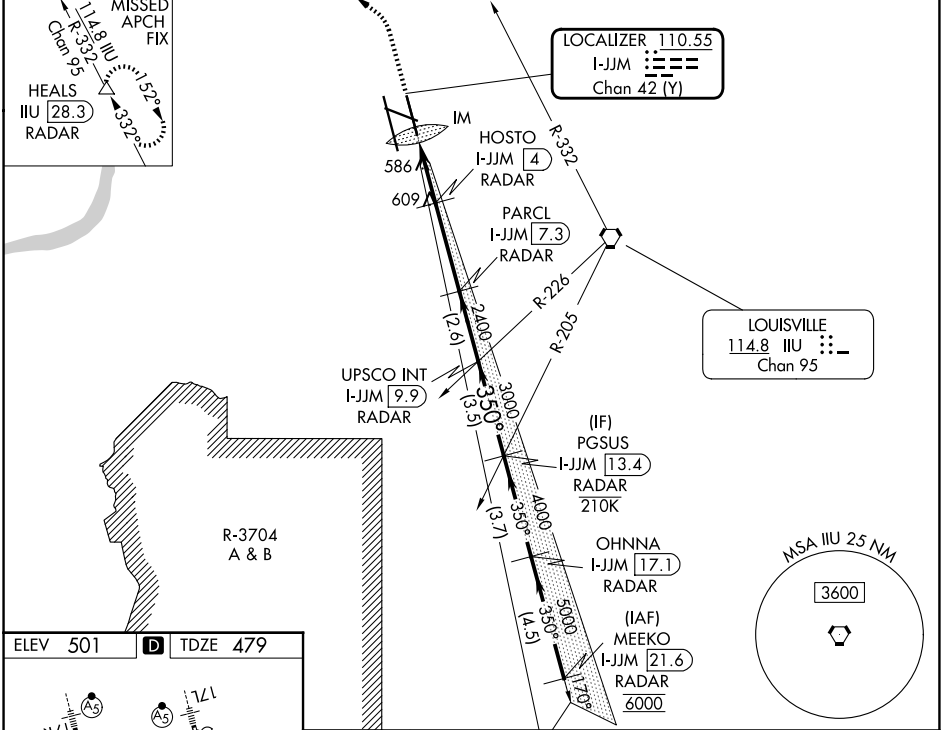
DME or RADAR required for LOC only.

⚠ Simultaneous approach authorized. Circling Rwy 11 NA at night.
For inop ALS, increase LOC Cat C/D to 5000 RVR.

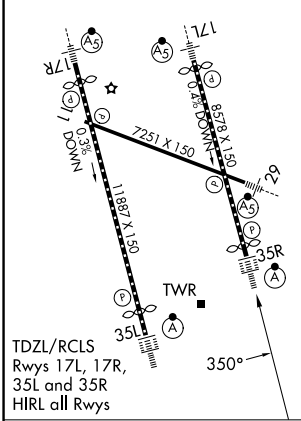
ALSF-2

MISSED APPROACH: Climb to 2500 then climbing left turn to 4000 on heading 350° and on IIL VORTAC R-332 to HEALS/28.3 DME/RADAR and hold.

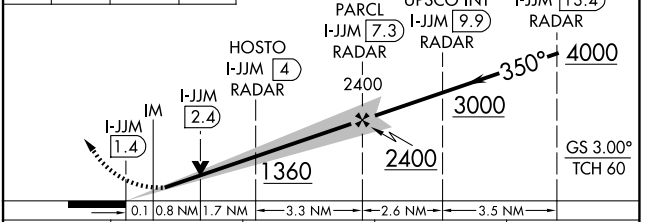
D-ATIS 118.725	LOUISVILLE APP CON 132.075 327.0	LOUISVILLE TOWER 124.2 257.8	GND CON 121.7 348.6
--------------------------	--	--	-------------------------------



ELEV 501	D	TDZE 479
-----------------	----------	-----------------



2500	4000	IIL R-332	HEALS	VGSI and ILS glidepath not coincident (VGSI Angle 3.00/TCH 71).
------	------	-----------	-------	---



FAF to MAP 5.9 NM					
Knots	60	90	120	150	180
Min:Sec	5:54	3:56	2:57	2:22	1:58

CATEGORY	A	B	C	D
S-ILS 35R	679/18 200 (200-½)			
S-LOC 35R	840/24	361 (400-½)	840/35	361 (400-¾)
CIRCLING	1040-1 539 (600-1)	1140-1 639 (700-1)	1160-1¾ 659 (700-1¾)	1400-3 899 (900-3)

SE-1, 14 MAY 2026 to 11 JUN 2026

SE-1, 14 MAY 2026 to 11 JUN 2026