

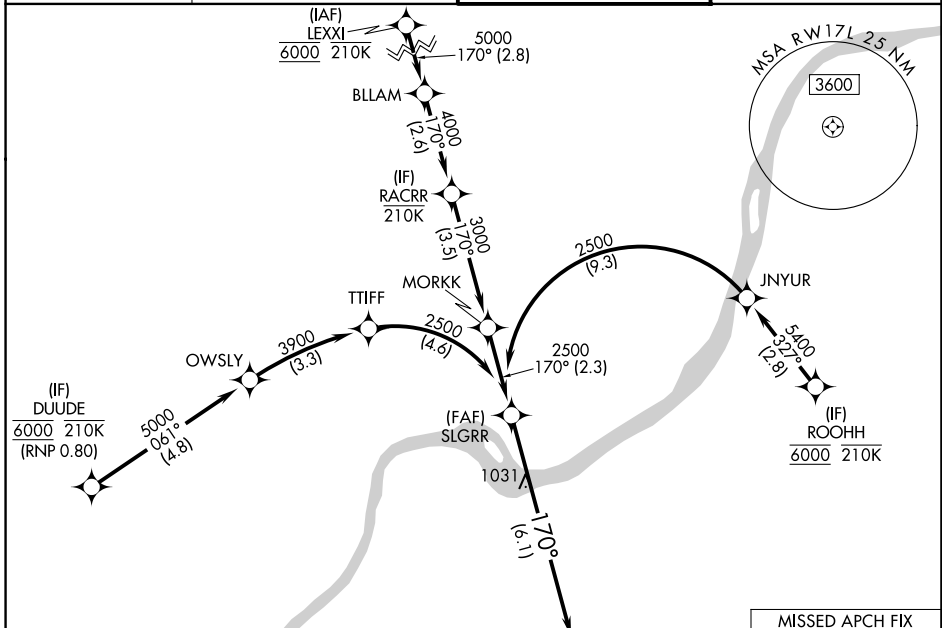
APP CRS	Rwy Ldg	7800
170°	TDZE	499
	Apt Elev	501

RNAV (RNP) Z RWY 17L

LOUISVILLE MUHAMMAD ALI INTL (SDF)

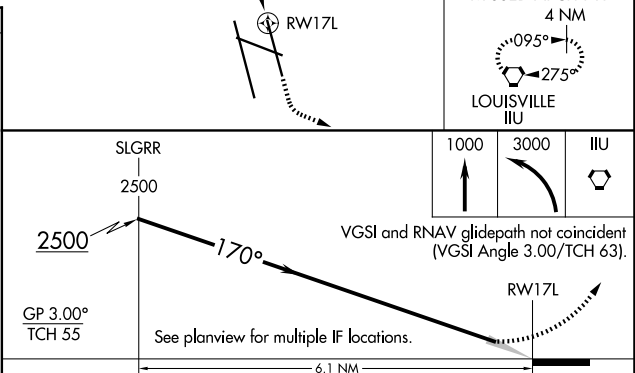
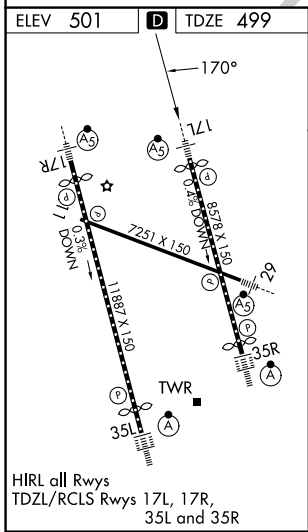
RNP AR APCH - GPS.	MALSR	MISSED APPROACH: Climb to 1000 then climbing left turn to 3000 direct IIL VORTAC and hold, continue climb-in-hold to 3000.
▼ For uncompensated Baro-VNAV systems, procedure NA below -13°C or above 54°C. Simultaneous approach authorized.		

D-ATIS 118.725	LOUISVILLE APP CON 132.075 327.0	LOUISVILLE TOWER 124.2 257.8	GND CON 121.7 348.6
--------------------------	--	--	-------------------------------



SE-1, 14 MAY 2026 to 11 JUN 2026

SE-1, 14 MAY 2026 to 11 JUN 2026



CATEGORY	A	B	C	D
RNP 0.30 DA	936/40		437 (500-3/4)	

AUTHORIZATION REQUIRED