


RNAV (RNP) Z RWY 29

LOUISVILLE MUHAMMAD ALI INTL (SDF)

APP CRS	Rwy Ldg	7250
296°	TDZE	480
	Apt Elev	501

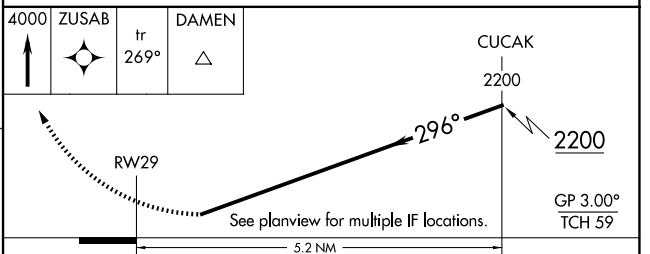
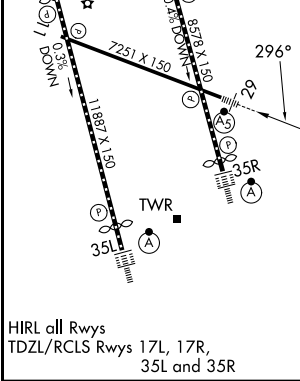
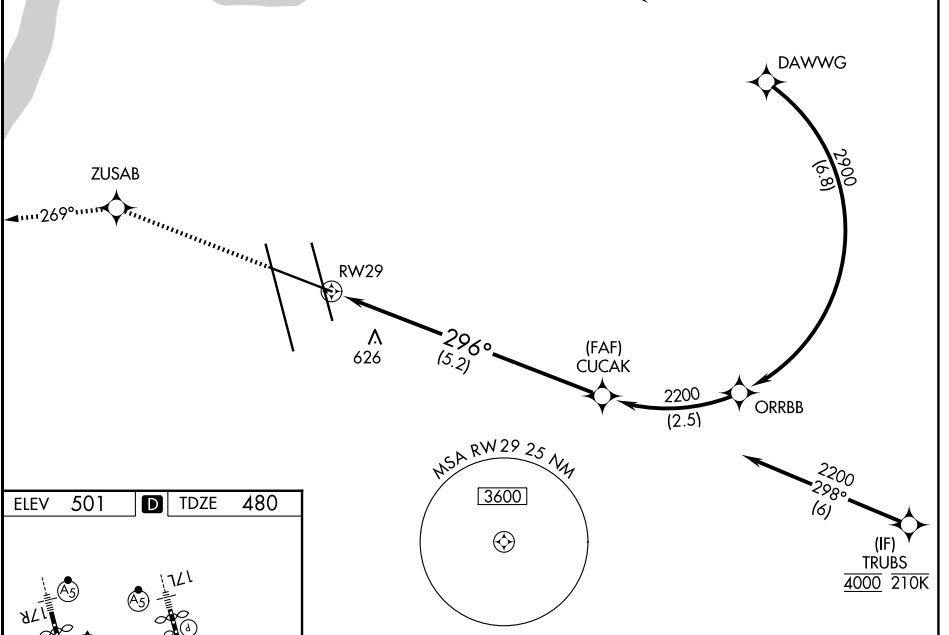
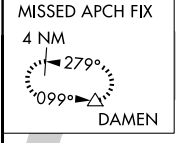
RNP AR APCH - GPS.

▽ For uncompensated Baro-VNAV systems, procedure NA below -13°C or above 54°C.

MALS 

MISSED APPROACH: Climb to 4000 direct ZUSAB and on track 269° to DAMEN and hold.

D-ATIS 118.725	LOUISVILLE APP CON 132.075 327.0	LOUISVILLE TOWER 124.2 257.8	GND CON 121.7 348.6
--------------------------	--	--	-------------------------------



CATEGORY	A	B	C	D
RNP 0.30 DA	908/40 428 (500-¾)			

AUTHORIZATION REQUIRED

SE-1, 14 MAY 2026 to 11 JUN 2026

SE-1, 14 MAY 2026 to 11 JUN 2026