

APP CRS	Rwy Ldg	<b>10000</b>
<b>350°</b>	TDZE	<b>464</b>
	Apt Elev	<b>501</b>

# RNAV (RNP) Z RWY 35L

LOUISVILLE MUHAMMAD ALI INTL (SDF)

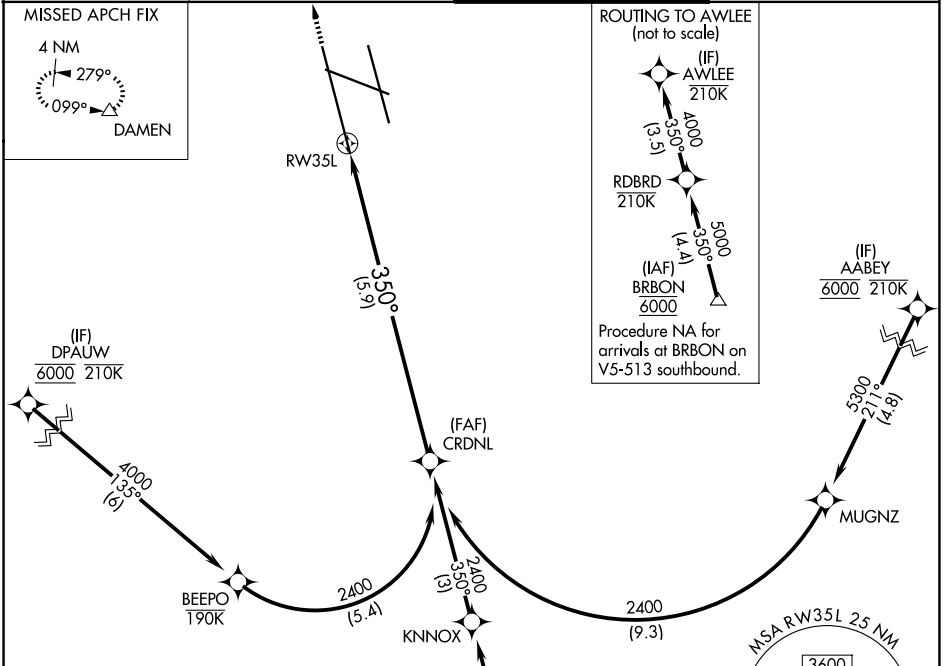
RNP AR APCH - GPS.

▼ For uncompensated Baro-VNAV systems, procedure NA below -10°C or above 54°C. Simultaneous approach authorized. For inop ALS, increase RNP 0.11 all Cats visibility to RVR 4500.

ALSF-2

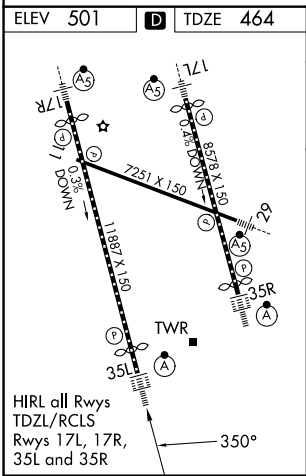
MISSED APPROACH: Climb to 1000 then climbing left turn to 4000 direct DAMEN and hold.

D-ATIS <b>118.725</b>	LOUISVILLE APP CON <b>132.075 327.0</b>	LOUISVILLE TOWER <b>124.2 257.8</b>	GND CON <b>121.7 348.6</b>
--------------------------	--	--	-------------------------------



SE-1, 14 MAY 2026 to 11 JUN 2026

SE-1, 14 MAY 2026 to 11 JUN 2026



ELEV 501 TDZE 464

R-3704 A & B

(IF) AWLEE 210K SEE INSET FOR ROUTING TO AWLEE

VGSI and RNAV glidepath not coincident (VGSI Angle 3.00/TCH 75).

CRDNL 2400

GP 3.00° TCH 59

5.9 NM

CATEGORY	A	B	C	D
RNP 0.11 DA		769/24	305 (300-½)	
RNP 0.30 DA		897/40	433 (400-¾)	

**AUTHORIZATION REQUIRED**