

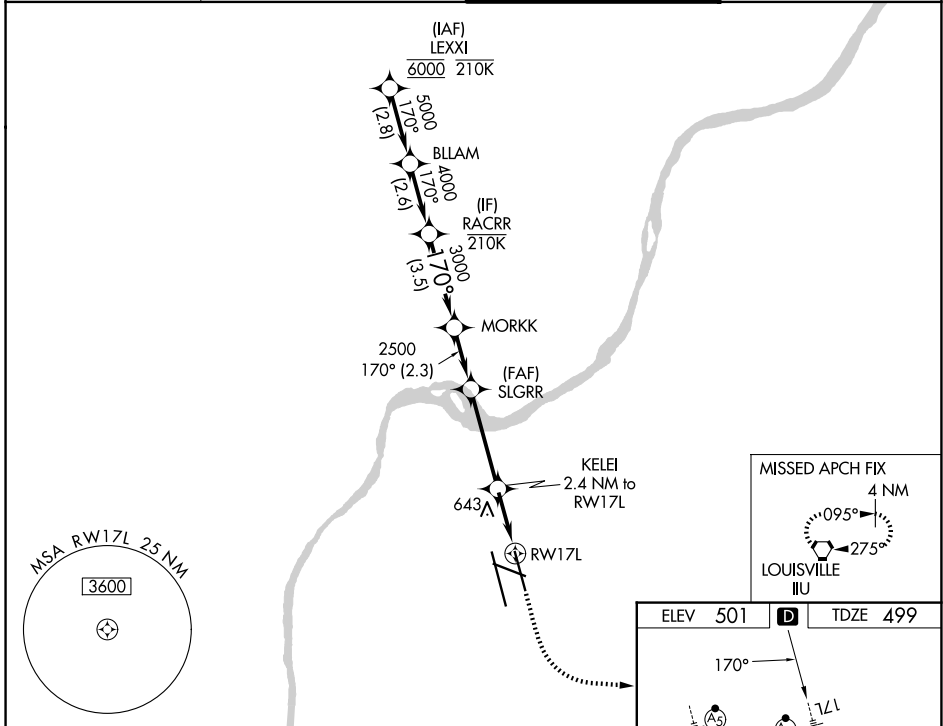
WAAS CH 90101 W17B	APP CRS 170°	Rwy Ldg TDZE Apt Elev	7800 499 501
--	------------------------	-----------------------------	---

RNAV (GPS) Y RWY 17L

LOUISVILLE MUHAMMAD ALI INTL (SDF)

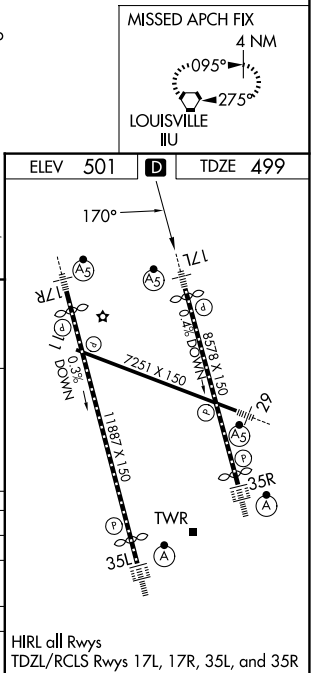
RNP APCH - GPS.	MALSRS	MISSED APPROACH: Climb to 1000 then climbing left turn to 3000 direct ILL VORTAC and hold, continue climb-in-hold to 3000.
⚠ Simultaneous approach authorized. Circling Rwy 11 NA at night. For uncompensated Baro-VNAV systems, LNAV/VNAV NA below -13°C or above 54°C. LNAV procedure NA during simultaneous operations. Use of FD or AP required during simultaneous operations. For inop ALS, increase LNAV/VNAV all Cats visibility to RVR 6000.		

D-ATIS 118.725	LOUISVILLE APP CON 132.075 327.0	LOUISVILLE TOWER 124.2 257.8	GND CON 121.7 348.6
--------------------------	--	--	-------------------------------



VGSI and RNAV glidepath not coincident (VGSI Angle 3.32/TCH 71).

	1000	3000	ILL
	↑	↷	⬠
RACRR	MORKK	SLGRR	KELEI
4000	3000	2500	2.4 NM to RW17L
GP 3.00°			1 NM to RW17L
TCH 55		1320	
	3.5 NM	2.3 NM	3.7 NM
	A	B	C
CATEGORY	699/18		200 (200-½)
LPV DA	909/40		410 (500-¾)
LNAV/VNAV	920/24		421 (500-½)
LNAV MDA	1040-1		1160-1¾
CIRCLING	539 (600-1)		639 (700-1)
	1140-1		659 (700-1¾)
	1400-3		899 (900-3)



SE-1, 14 MAY 2026 to 11 JUN 2026

SE-1, 14 MAY 2026 to 11 JUN 2026