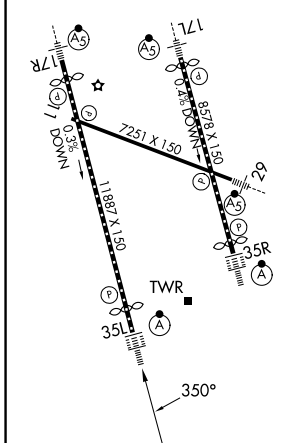
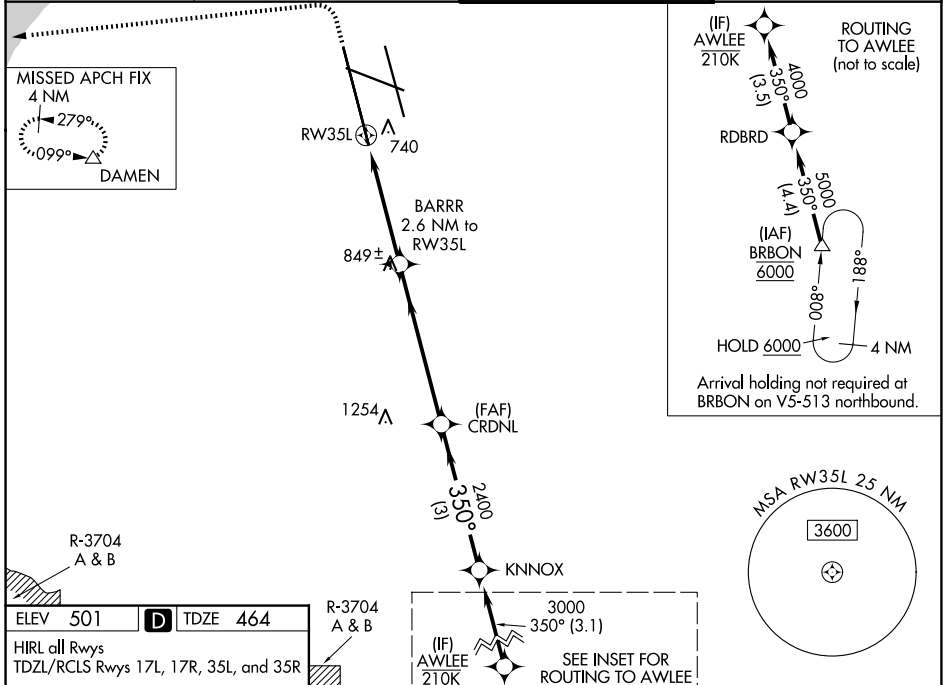


WAAS CH 86203 W35A	APP CRS 350°	Rwy Ldg 10000 TDZE 464 Apt Elev 501
--	------------------------	--

RNAV (GPS) Y RWY 35L

LOUISVILLE MUHAMMAD ALI INTL (SDF)

RNP APCH - GPS. Simultaneous approach authorized. LNAV procedure NA during simultaneous operations. Use of FD or AP required during simultaneous operations. Circling Rwy 11 NA at night. For uncompensated Baro-VNAV systems, LNAV/VNAV NA below -10°C or above 54°C. For inop ALS, increase LNAV Cats C/D visibility to 1½ SM.		ALSF-2 	MISSED APPROACH: Climb to 1000 then climbing left turn to 4000 direct DAMEN and hold.
D-ATIS 118.725	LOUISVILLE APP CON 132.075 327.0	LOUISVILLE TOWER 124.2 257.8	GND CON 121.7 348.6



R-3704 A & B

(IF) AWLEE 210K
3000 350° (3.1)
SEE INSET FOR ROUTING TO AWLEE

VGSI and RNAV glidepath not coincident (VGSI Angle 3.00/TCH 75).

	1000	4000	DAMEN	CRDNL	KNOX	AWLEE
			1.5 NM to RW35L	2.6 NM to RW35L	2400	350° 4000
			1.5 NM	1.2 NM	3.3 NM	3.1 NM
CATEGORY			A	B	C	D
LPV DA			664/18	200 (200-½)		
LNAV/VNAV DA			901/40	437 (400-¾)		
LNAV MDA	1000/24	536 (500-½)	1000/55	536 (500-1)		
CIRCLING	1040-1 539 (600-1)	1140-1 639 (700-1)	1160-1¾ 659 (700-1¾)	1400-3 899 (900-3)		

GP 3.00° TCH 59

SE-1, 14 MAY 2026 to 11 JUN 2026

SE-1, 14 MAY 2026 to 11 JUN 2026