

LUBBOCK, TEXAS

# HI-LOC/DME BC RWY 35L

LOC/DME I-LBB <b>111.7</b> Chan <b>54</b>	APCH CRS <b>354°</b>	Rwy Idg <b>11,498</b> TDZE <b>3254</b> Arpt Elev <b>3282</b>
---	-------------------------	--

[USAF]

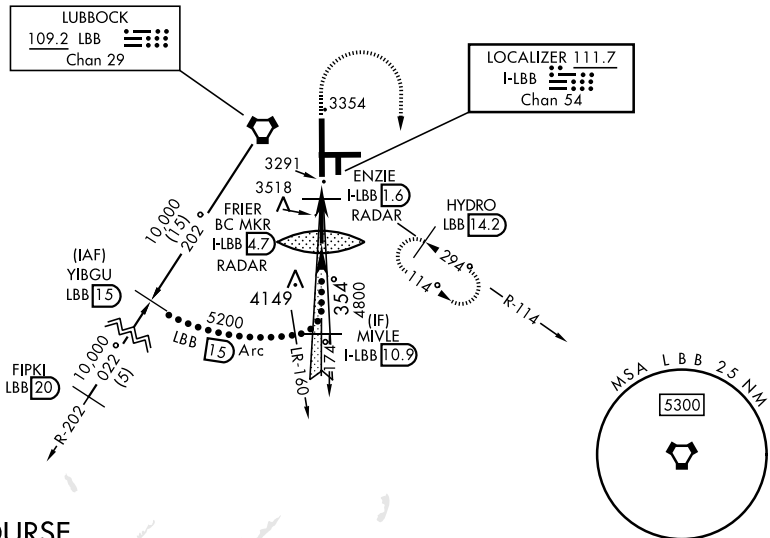
LUBBOCK PRESTON SMITH INTL (KLBB)

**▲** Use I-LBB DME when on Localizer course.

**▲** MISSED APPROACH: Climb to 4000, then climbing right turn to 5200 on Hdg 170° and on LBB VORTAC R-114 to HYDRO INT/LBB 14.2 DME and hold.

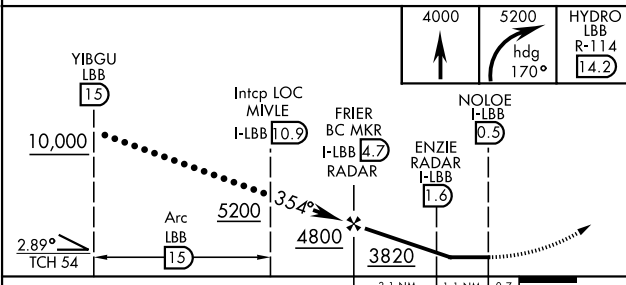
ATIS <b>125.3 270.275</b>	APP CON <b>119.2 351.8</b>	TOWER <b>120.5 239.3</b>	GND CON <b>121.9 348.6</b>	CLNC DEL <b>125.8 281.55</b>
------------------------------	-------------------------------	-----------------------------	-------------------------------	---------------------------------

3737

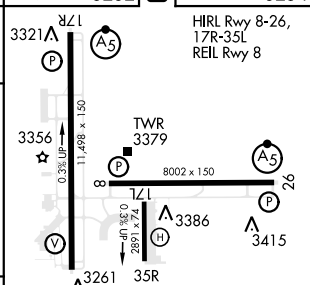


## BACKCOURSE

EMERG SAFE ALT 100 NM 7300



ELEV	3282	TDZE	3254
------	------	------	------



CATEGORY	C	D	E			
S-35L	3560-7/8	306 (300-7/8)				
CIRCLING	3880-1 1/2 598 (600-1 1/2)	3940-2 658 (700-2)	4100-3 818 (900-3)			
	FAF to MAP 4.2 NM					
	Knots	120	150	160	180	200
	Min:Sec	2:06	1:41	1:35	1:24	1:16

LUBBOCK, TEXAS  
Orig C 21MAY20

33° 40' N - 101° 49' W

LUBBOCK PRESTON SMITH INTL (KLBB)

# HI-LOC/DME BC RWY 35L

SC-2, 14 MAY 2026 to 11 JUN 2026

SC-2, 14 MAY 2026 to 11 JUN 2026