

# HI-VOR or TACAN Z RWY 26

VORTAC LBB <b>109.2</b> Chan <b>29</b>	APCH CRS <b>282°</b>	Rwy Idg TDZE Arpt Elev <b>8002</b> <b>3256</b> <b>3282</b>
--	-------------------------	---

[USAF]

LUBBOCK PRESTON SMITH INTL (KLBB)

DME required. RADAR required for entry at CIRKI.



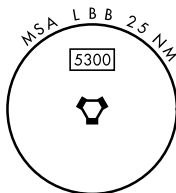
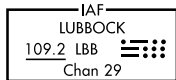
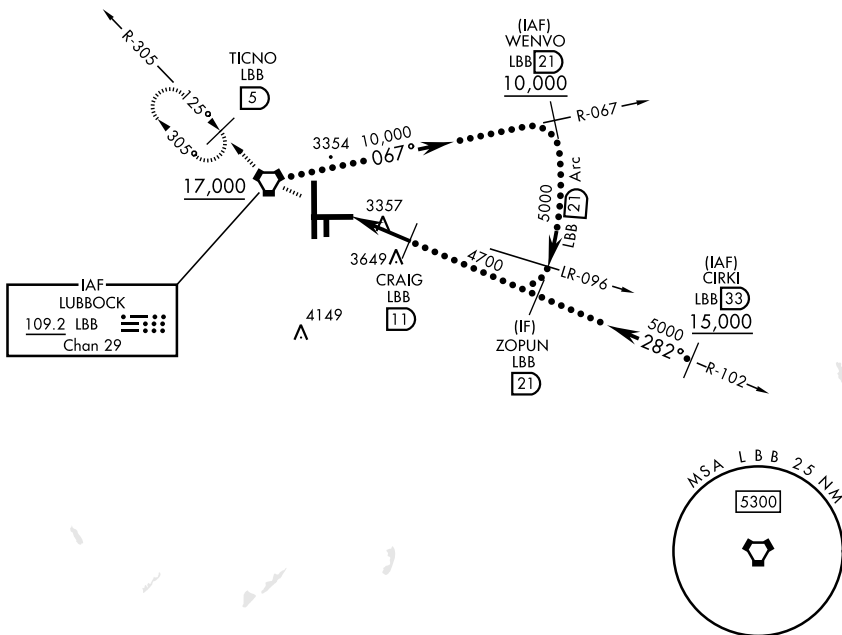
MISSED APPROACH: Climb and maintain 5100 direct LBB VORTAC and via LBB R-305 to TICNO (LBB 5 DME) and hold.

\* When ALS inop, increase CAT E vis to 1¼.

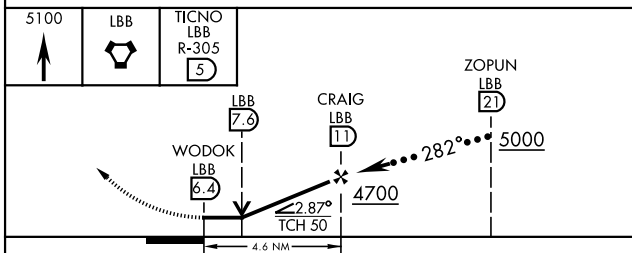
ATIS <b>125.3 270.275</b>	APP CON <b>119.2 351.8</b>	TOWER <b>120.5 239.3</b>	GND CON <b>121.9 348.6</b>	CLNC DEL <b>125.8 281.55</b>
------------------------------	-------------------------------	-----------------------------	-------------------------------	---------------------------------

Procedure NA for arrival on LBB VORTAC airway R-052 CW R-114.

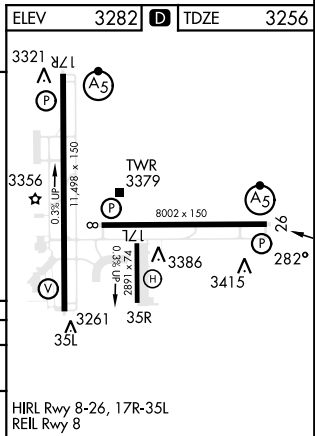
3737



EMERG SAFE ALT 100 NM 7300



CATEGORY	C	D	E
S-26*	3680/40	424	(400-¾)
CIRCLING	3880-1½ 598 (600-1½)	3940-2 658 (700-2)	4100-3 818 (900-3)



# HI-VOR or TACAN Z RWY 26

SC-2, 14 MAY 2026 to 11 JUN 2026

SC-2, 14 MAY 2026 to 11 JUN 2026