

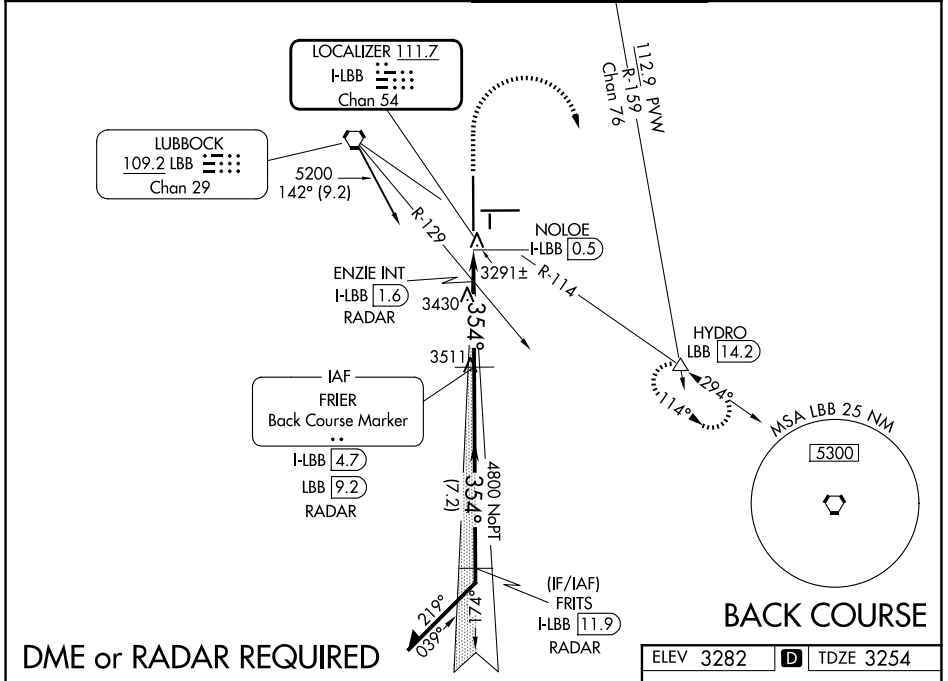
LOC I-LBB <b>111.7</b> Chan 54	APP CRS <b>354°</b>	Rwy Ldg TDZE Apt Elev	<b>11500</b> <b>3254</b> <b>3282</b>
--------------------------------------	------------------------	-----------------------------	--------------------------------------------

# LOC BC RWY 35L

LUBBOCK PRESTON SMITH INTL (LBB)

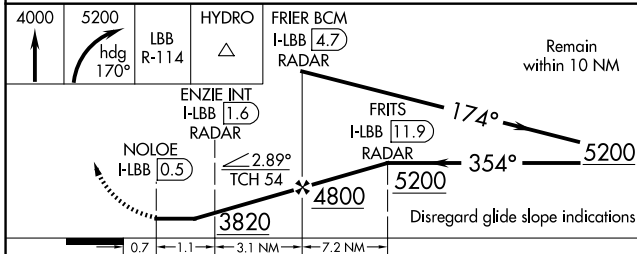
**MISSED APPROACH:** Climb to 4000 then climbing right turn to 5200 on heading 170° and on LBB VORTAC R-114 to HYDRO INT/LBB 14.2 DME and hold.

ATIS <b>125.3 270.275</b>	LUBBOCK APP CON <b>119.2 351.8</b>	LUBBOCK TOWER <b>120.5 239.3</b>	GND CON <b>121.9 348.6</b>
------------------------------	---------------------------------------	-------------------------------------	-------------------------------

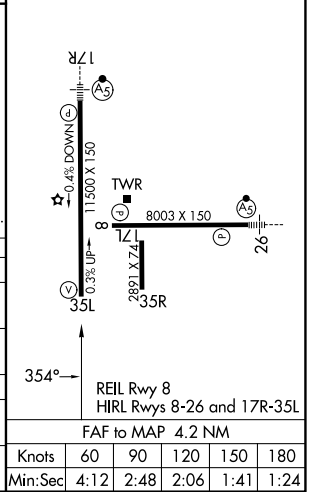


## DME or RADAR REQUIRED

ELEV 3282	TDZE 3254
-----------	-----------



CATEGORY	A	B	C	D
S-35L	3820-1	566 (600-1)	3820-1½	566 (600-1½)
CIRCLING	3820-1	538 (600-1)	3880-1½	3940-2
ENZIE FIX MINIMUMS				
S-35L	3560-1	306 (300-1)	3560-¾	306 (300-¾)
CIRCLING	3720-1	3740-1	3880-1½	3940-2
	438 (500-1)	458 (500-1)	598 (600-1½)	658 (700-2)



SC-2, 14 MAY 2026 to 11 JUN 2026

SC-2, 14 MAY 2026 to 11 JUN 2026

Knots	60	90	120	150	180
Min:Sec	4:12	2:48	2:06	1:41	1:24