

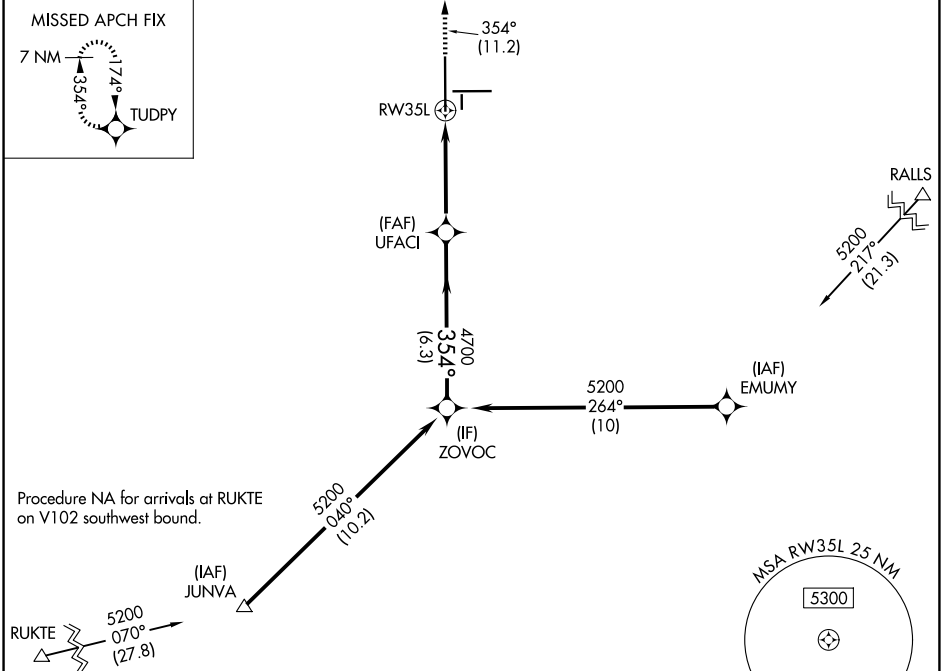
APP CRS <b>354°</b>	Rwy Ldg TDZE Apt Elev	<b>11500</b> <b>3254</b> <b>3282</b>
------------------------	-----------------------------	--

# RNAV (RNP) Z RWY 35L

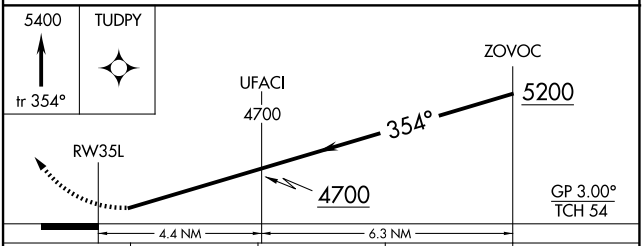
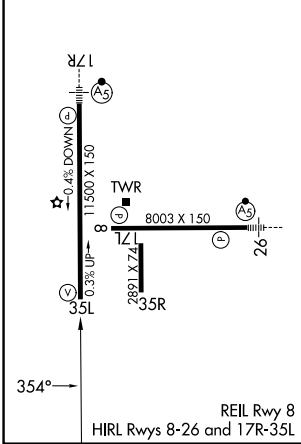
LUBBOCK PRESTON SMITH INTL (LBB)

RNP AR APCH.		MISSED APPROACH: Climb to 5400 on track 354° to TUDPY and hold.	
For uncompensated Baro-VNAV systems, procedure NA below -12° C or above 51° C.			

ATIS <b>125.3 270.275</b>	LUBBOCK APP CON <b>119.2 351.8</b>	LUBBOCK TOWER <b>120.5 239.3</b>	GND CON <b>121.9 348.6</b>
------------------------------	---------------------------------------	-------------------------------------	-------------------------------



ELEV 3282	<b>D</b>	TDZE 3254
-----------	----------	-----------



CATEGORY	A	B	C	D
RNP 0.18 DA		3559-7/8	305 (300-7%)	
RNP 0.30 DA		3620-1 1/8	366 (400-1 1/8%)	

**AUTHORIZATION REQUIRED**

SC-2, 14 MAY 2026 to 11 JUN 2026

SC-2, 14 MAY 2026 to 11 JUN 2026