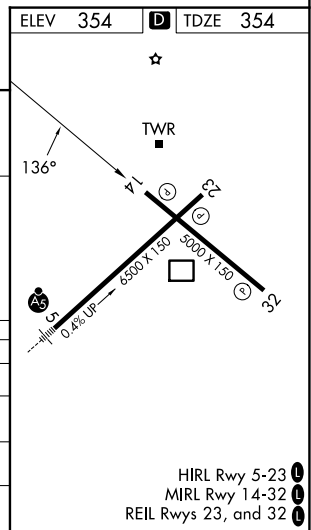
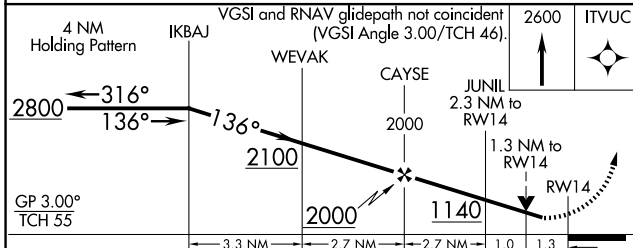
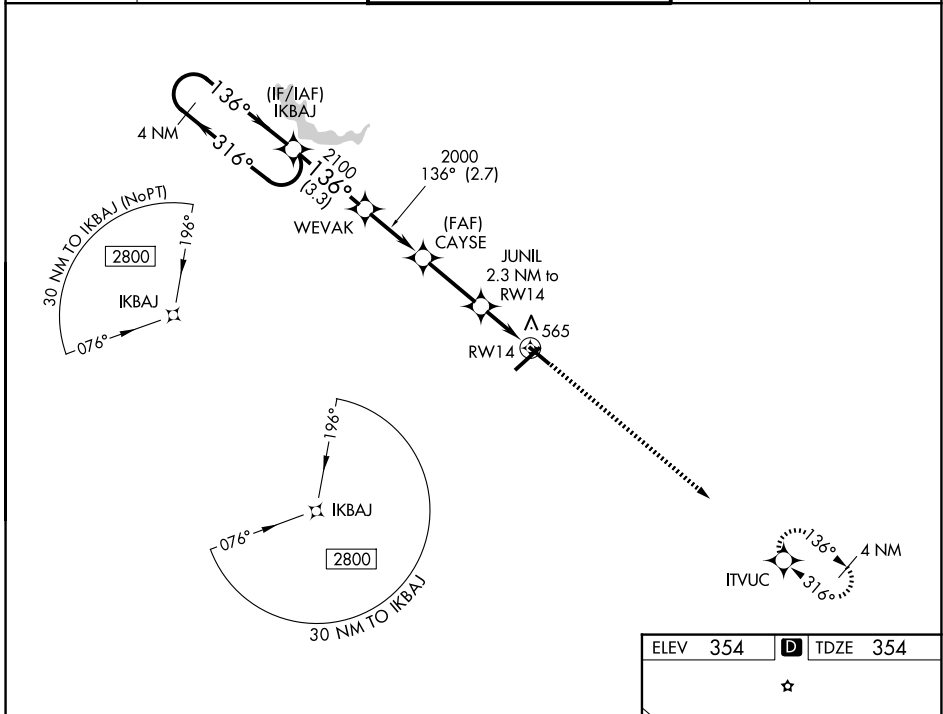


WAAS CH <b>90322</b> <b>W14A</b>	APP CRS <b>136°</b>	Rwy Ldg <b>5000</b> TDZE <b>354</b> Apt Elev <b>354</b>
----------------------------------------	------------------------	---------------------------------------------------------------

# RNAV (GPS) RWY 14

MIDDLE GEORGIA RGNL (MCN)

RNP APCH-GPS.		MISSED APPROACH: Climb to 2600 direct ITVUC and hold.		
<p>▼ For uncompensated Baro-VNAV systems, LNAV/VNAV NA below -8°C or above 54°C. Rwy 14 helicopter visibility reduction below 3/4 SM NA.</p>				
ATIS <b>120.775</b>	ATLANTA APP CON ★ <b>124.2 279.6</b>	MACON TOWER ★ <b>128.2 (CTAF) 257.8</b>	GND CON <b>121.65</b>	UNICOM <b>122.95</b>



CATEGORY	A	B	C	D
LPV DA	652-1		298 (300-1)	
LNAV/VNAV DA	745-1¼		391 (400-1¼)	
LNAV MDA	820-1	466 (500-1)	820-1¾	466 (500-1¾)
CIRCLING	900-1	546 (600-1)	920-1½	1120-2½
			566 (600-1½)	766 (800-2½)

SE-4, 14 MAY 2026 to 11 JUN 2026

SE-4, 14 MAY 2026 to 11 JUN 2026