

MADISON, WISCONSIN

# HI-TACAN RWY 36

VORTAC MSN <b>108.6</b> Chan <b>23</b>	APCH CRS <b>001°</b>	Rwy Idg TDZE <b>8006</b> 862 Arprt Elev <b>887</b>
--	-------------------------	---

[USAF]

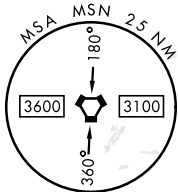
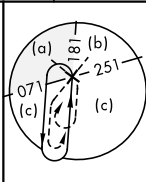
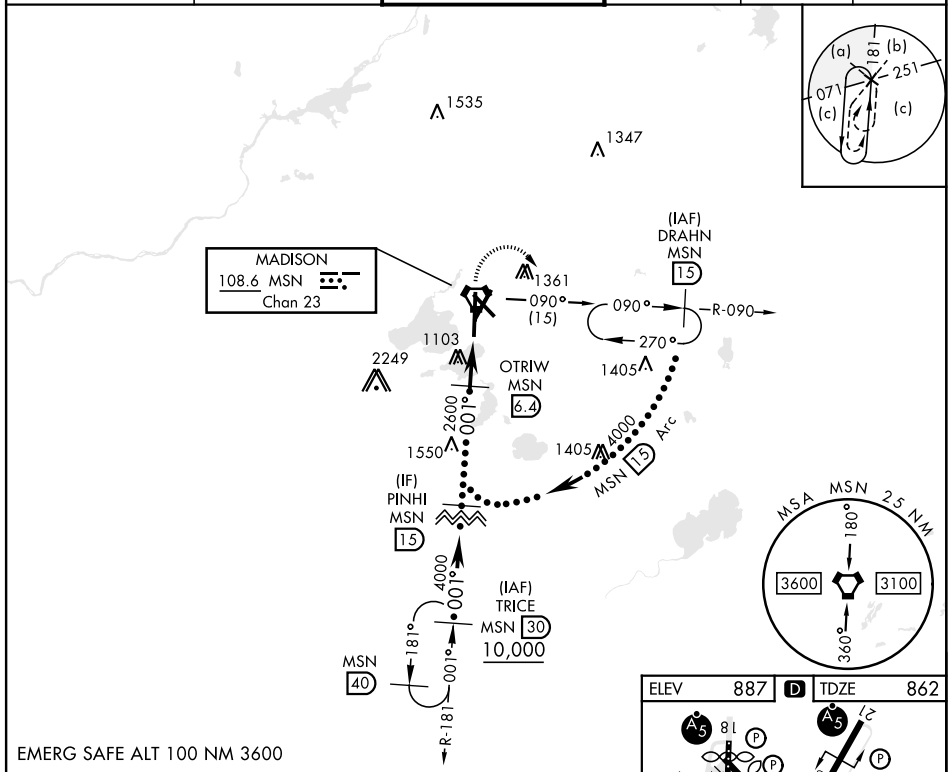
DANE COUNTY RGNL/TRUAX FLD (KMSN)

RADAR required

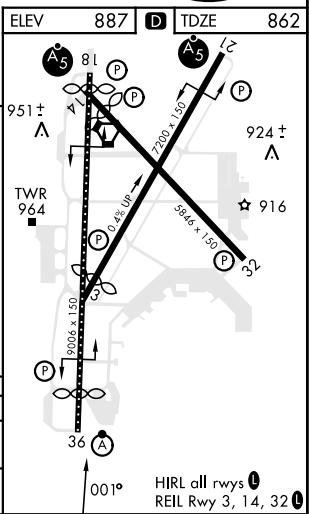
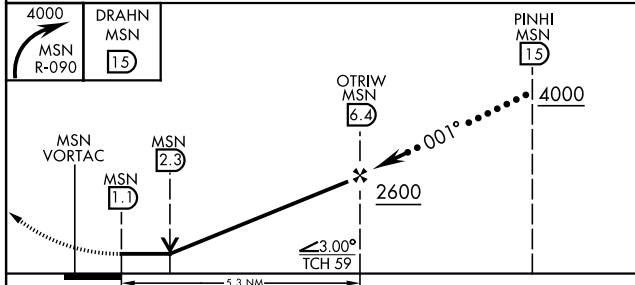


MISSILE APPROACH: Climbing right turn to 4000 on MSN VORTAC R-090 to DRAHN 15 DME and hold.

ATIS <b>124.65 278.3</b>	MADISON APP CON <b>120.1 350.3</b> EAST <b>135.45 343.7</b> WEST	MADISON TOWER ★ <b>119.3</b> (CTAF) <b>0 257.8</b>	GND CON <b>121.9 348.6</b>	CLNC DEL <b>121.625</b>	UNICOM <b>122.95</b>
-----------------------------	--	---	-------------------------------	----------------------------	-------------------------



EMERG SAFE ALT 100 NM 3600



CATEGORY	C	D	E
S-36	1320/40 458 (500-3/4)	1320/50 458	(500-1)
CIRCLING	1460-1 1/2 573 (600-1 1/2)	1700-2 3/4 813 (900-2 3/4)	1700-3 813 (900-3)

MADISON, WISCONSIN

43°08'N-89°20'W

DANE COUNTY RGNL/TRUAX FLD (KMSN)

Amdt 1A 21MAR24

# HI-TACAN RWY 36

EC-3, 14 MAY 2026 to 11 JUN 2026

EC-3, 14 MAY 2026 to 11 JUN 2026

HIRL all rwy's **0**  
REIL Rwy 3, 14, 32 **0**