

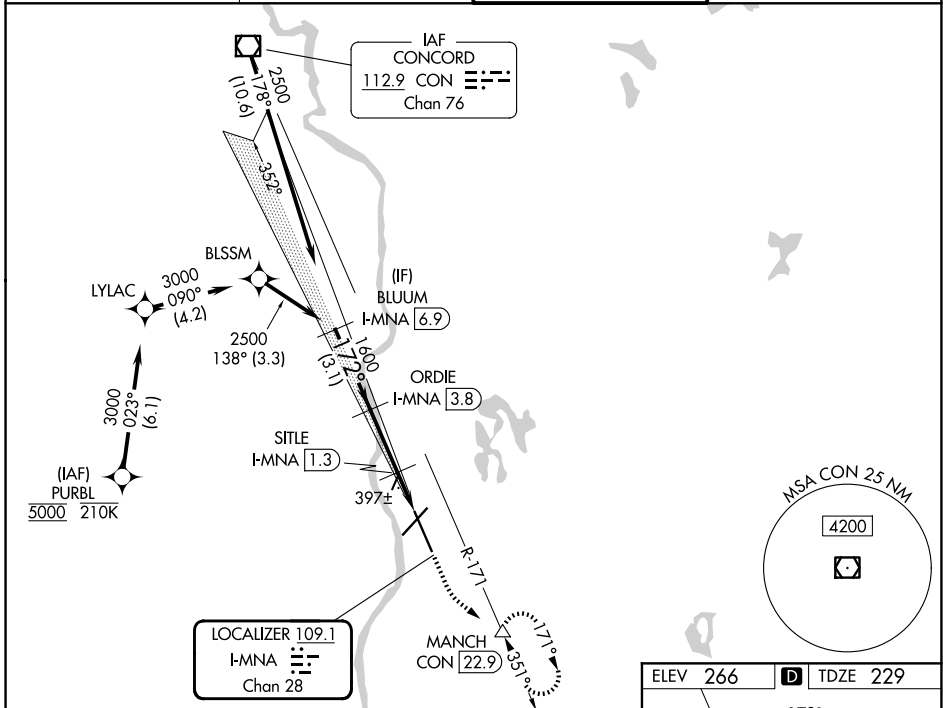
LOC/DME I-MNA 109.1 Chan 28	APP CRS 172°	Rwy Ldg 8914 TDZE 229 Apt Elev 266
--	------------------------	---

ILS or LOC RWY 17

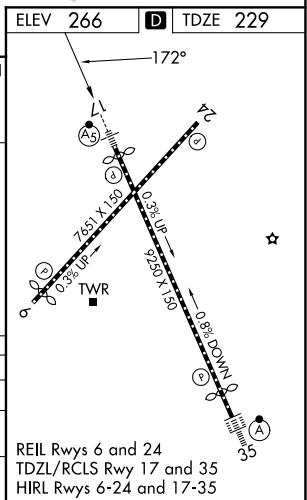
MANCHESTER BOSTON RGNL (MHT)

RNP APCH - GPS. From PURBL. DME required.	MALSR 	MISSED APPROACH: Climb to 900 then climbing left turn to 2100 on heading 145° and on CON VOR/DME R-171 to MANCH/CON 22.9 DME and hold, continue climb-in-hold to 2100.
--	-----------	--

ATIS 119.55	BOSTON APP CON 124.9 269.075	MANCHESTER TOWER 121.3 239.025	GND CON 121.9
-----------------------	--	--	-------------------------



VGSI and ILS glidepath not coincident (VGSI Angle 3.10/TCH 67). BLUUM I-MNA 6.9 GS 3.10° TCH 49 2500 172° 1600 1600 780 3.1 NM 2.5 NM 1.6 NM	900	2100	CON R-171	MANCH
		hdg 145°		
ORDIE I-MNA 3.8	SITLE I-MNA 1.3	I-MNA DME ANTENNA	I-MNA 0.3	
CATEGORY	A	B	C	D
S-ILS 17	429/18		200 (200-½)	
S-LOC 17	660/24	431 (400-½)	660/40	431 (400-¾)
CIRCLING	880-1	614 (700-1)	980-2 714 (800-2)	1100-2¾ 834 (900-2¾)



NE-1, 14 MAY 2026 to 11 JUN 2026

NE-1, 14 MAY 2026 to 11 JUN 2026