

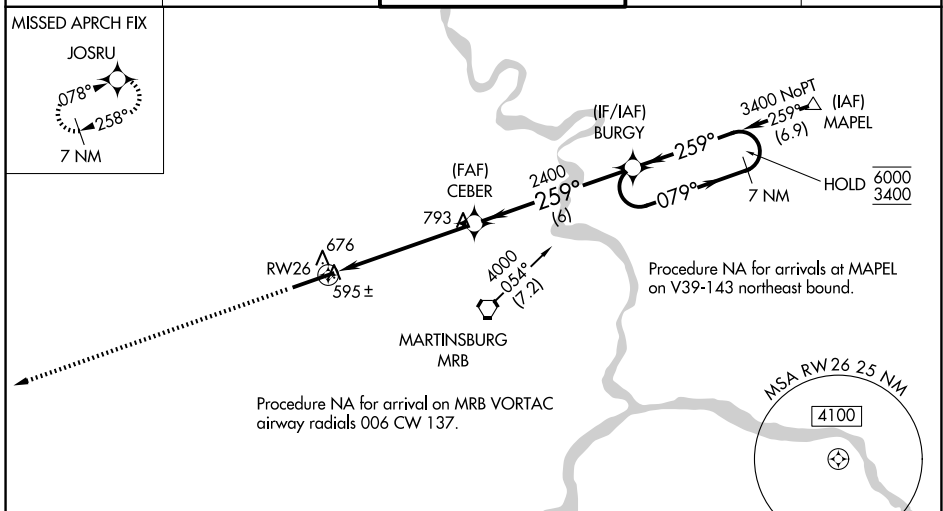
| | | | |
|--|------------------------|-----------------------------|---|
| WAAS CH 53609 W26A | APP CRS 259° | Rwy Ldg TDZE Apt Elev | 7815 548 565 |
|--|------------------------|-----------------------------|---|

RNAV (GPS) RWY 26

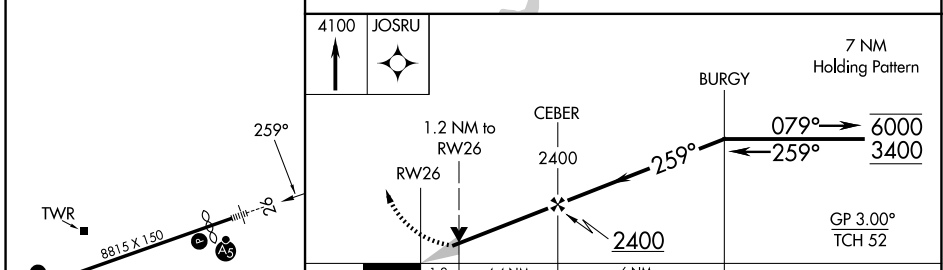
EASTERN WV RGNL/SHEPHERD FLD (MRB)

| | | | |
|-----------------|--|--------|--|
| RNP APCH - GPS. | <p>▼ Baro-VNAV and VDP NA when using HGR altimeter setting. For uncompensated Baro-VNAV systems, LNAV/VNAV NA below -16°C or above 54°C.</p> <p>▲ When local altimeter setting not received, use HGR altimeter setting: increase LPV DA to 868 feet; increase LNAV/VNAV DA to 1283 feet and all visibilities ¼ SM; increase all MDAs 80 feet and LNAV visibility Cats C/D/E ¼ SM, and Circling visibility Cats C/D ¼ SM. For inop ALS, increase LPV Cat E visibility to ¾, LNAV/VNAV Cat E to 2¼, and LNAV Cat E to 1½. For inop ALS when using HGR altimeter setting, increase LPV all Cats visibility to 1, LNAV/VNAV Cat E visibility to 2½, and LNAV Cat E visibility to 1¾.</p> | MALS R | MISSED APPROACH: Climb to 4100 direct JOSRU and hold, continue climb-in-hold to 4100. |
|-----------------|--|--------|--|

| | | | | |
|------------------------|---|--|--------------------------------|-------------------------|
| ASOS 119.925 | POTOMAC APP CON 126.825 239.025 | MARTINSBURG TOWER ★ 124.3 (CTAF) 0 233.7 | GND CON 121.8 257.65 | UNICOM 122.95 |
|------------------------|---|--|--------------------------------|-------------------------|



| | | |
|----------|----------|----------|
| ELEV 565 | D | TDZE 548 |
|----------|----------|----------|



| CATEGORY | A | B | C | D | E |
|--------------|-----------------------|-----------------------|-----------------------|-------------------------|-------------------------|
| LPV DA | 798-½ | | 250 (300-½) | | |
| LNAV/VNAV DA | 1213-1¾ | | 665 (700-1¾) | | |
| LNAV MDA | 980-½ | 432 (500-½) | 980-¾ 432 (500-¾) | 980-1 | 432 (500-1) |
| CIRCLING | 1100-1 535 (600-1) | 1240-1 675 (700-1) | 1240-2 675 (700-2) | 1320-2½ 755 (800-2½) | 2180-3 1615 (1700-3) |

NE-4, 14 MAY 2026 to 11 JUN 2026

NE-4, 14 MAY 2026 to 11 JUN 2026