

VORTAC MRB 112.1 Chan 58	APP CRS 290°	Rwy Ldg TDZE Apt Elev N/A N/A 565
--	------------------------	---

VOR-A

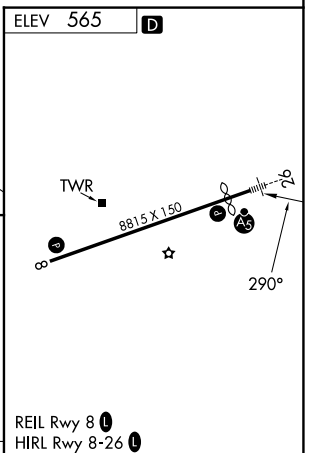
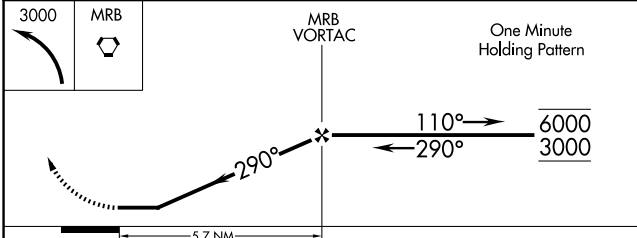
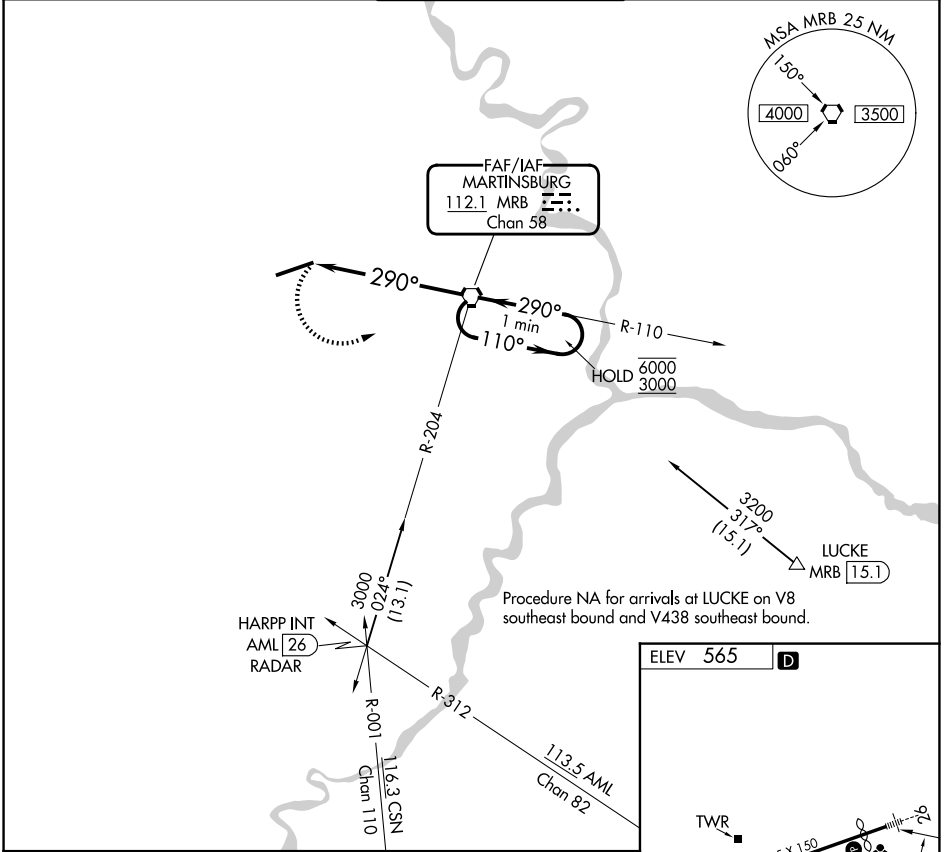
EASTERN WV RGNL/SHEPHERD FLD (MRB)

RADAR required for procedure entry at HARPP.

⚠ When local altimeter setting not received, use HGR altimeter setting:
⚠ increase all MDAs 80 feet and Circling visibility Cats C/D ¼ SM.

MISSED APPROACH: Climbing left turn to 3000 direct MRB VORTAC and hold, continue climb in hold to 3000.

ASOS 119.925	POTOMAC APP CON 126.825 239.025	MARTINSBURG TOWER ★ 124.3 (CTAF) 233.7	GND CON 121.8 257.65	UNICOM 122.95
------------------------	---	---	--------------------------------	-------------------------



CATEGORY	A	B	C	D	E	FAF to MAP 5.7 NM					
CIRCLING	1120-1 555 (600-1)	1240-1 675 (700-1)	1240-2 675 (700-2)	1320-2½ 755 (800-2½)	2180-3 1615 (1700-3)	Knots	60	90	120	150	180
						Min:Sec	5:42	3:48	2:51	2:17	1:54

VOR-A

NE-4, 14 MAY 2026 to 11 JUN 2026

NE-4, 14 MAY 2026 to 11 JUN 2026